

Lendlease
Annual Compliance Report (EPBC 2015/7561)
Alkimos City Centre and Central (Vista)

10 December 2019

57155-124848

JBS&G Australia Pty Ltd T/A Strategen-JBS&G

Declaration of accuracy

In making this declaration, I am aware that sections 490 and 491 of the Environment Protection and Biodiversity Conservation Act 1999 (Cth) (EPBC Act) make it an offence in certain circumstances to knowingly provide false or misleading information or documents. The offence is punishable on conviction by imprisonment or a fine, or both. I declare that all the information and documentation supporting this compliance report is true and correct in every particular. I am authorised to bind the approval holder to this declaration and that I have no knowledge of that authorisation being revoked at the time of making this declaration.

Signed



Full name (please print)

ANTHONY ROWBOTTOM

Position (please print)

GENERAL MANAGER, DEVELOPMENT

Organisation (please print including ABN/ACN if applicable)

44 611 187 083

Date

10 / 12 / 19

Table of Contents

1.	Introduction	1
1.1	Project approvals.....	1
1.2	Project description	1
2.	Current status	4
3.	Audit methodology	5
3.1	Audit plan	5
3.1.1	Purpose and scope.....	5
3.1.2	Methodology.....	5
3.2	Audit terminology.....	5
4.	Audit results.....	7
4.1	Compliance with EPBC 2015/7561 conditions	7
4.1.1	Potential non-conformances with the Construction Environmental Management Plan.....	7
4.1.2	Potential non-conformances with the Parks and Recreation Reserve Management Plan.....	7
5.	References	11
6.	Limitations	26

List of Tables

Table 3.1:	Persons consulted during audit.....	5
Table 3.2:	Action implementation status.....	5
Table 4.1:	Compliance with Conditions of EPBC 2015/7561	8
Table A.1:	Construction Environmental Management Plan audit table	12
Table B.1:	Parks and Recreation Reserve Management Plan audit table.....	18

List of Figures

Figure 1.1:	Alkimos City Centre and Central (Vista) Precinct Plan.....	3
-------------	--	---

Appendices

- Appendix A Compliance with Construction Environmental Management Plan
- Appendix B Compliance with Parks and Recreation Reserve Management Plan

1. Introduction

This report addresses the status and compliance of implementation of the Alkimos City Centre and Central (Vista) residential development against conditions in *Environment Protection and Biodiversity Conservation Act 1999* (EPBC Act) approval 2015/7561 (EPBC 2015/7561). This report has been prepared for the purpose of meeting the requirements of condition 7 of EPBC 2015/7561, which requires the proponent to publish this annual compliance report (ACR) within three months of every 12-month anniversary of the commencement of the action (by 25 December 2019).

1.1 Project approvals

Lendlease Communities (Alkimos Central) Pty Ltd (Lendlease) is developing the Alkimos Central (Vista) Residential Development (the Project) located approximately 40 km northwest of the Perth Central Business District. The project consists of:

- Alkimos City Centre (Lot 9502, Marmion Avenue, Alkimos)
- Central Alkimos (Lot 9501, Marmion Avenue, Alkimos).

The project was referred to the former Department of the Environment (DotE, now the Department of the Environment and Energy [DEE]) on 18 September 2015. The proposed action was determined to be a controlled action requiring assessment via preliminary documentation on 26 November 2015. On 30 March 2017, the proposal was conditionally approved (EPBC 2015/7561).

In accordance with conditions 2 and 3 of EPBC 2015/7561, the Construction Environmental Management Plan, dated 17 July 2017 (CEMP Rev 2) and the Parks and Recreation Reserve Management Plan, dated 17 July 2017 (PRRMP Rev 2) were approved on 26 July 2017.

Condition 4 of EPBC 2015/7561 requires the provision of an offset property in the vicinity of Gingin, WA of at least 1138 ha of Carnaby's Black-Cockatoo (CBC) habitat, to offset the clearing of 257 ha of CBC habitat. On 14 August 2017 the Department confirmed that condition 4 had been met.

The Project commenced on 26 September 2017 with clearing in Precinct 1, and the DEE was notified on 4 October 2017, in accordance with condition 5 of EPBC 2015/7561.

1.2 Project description

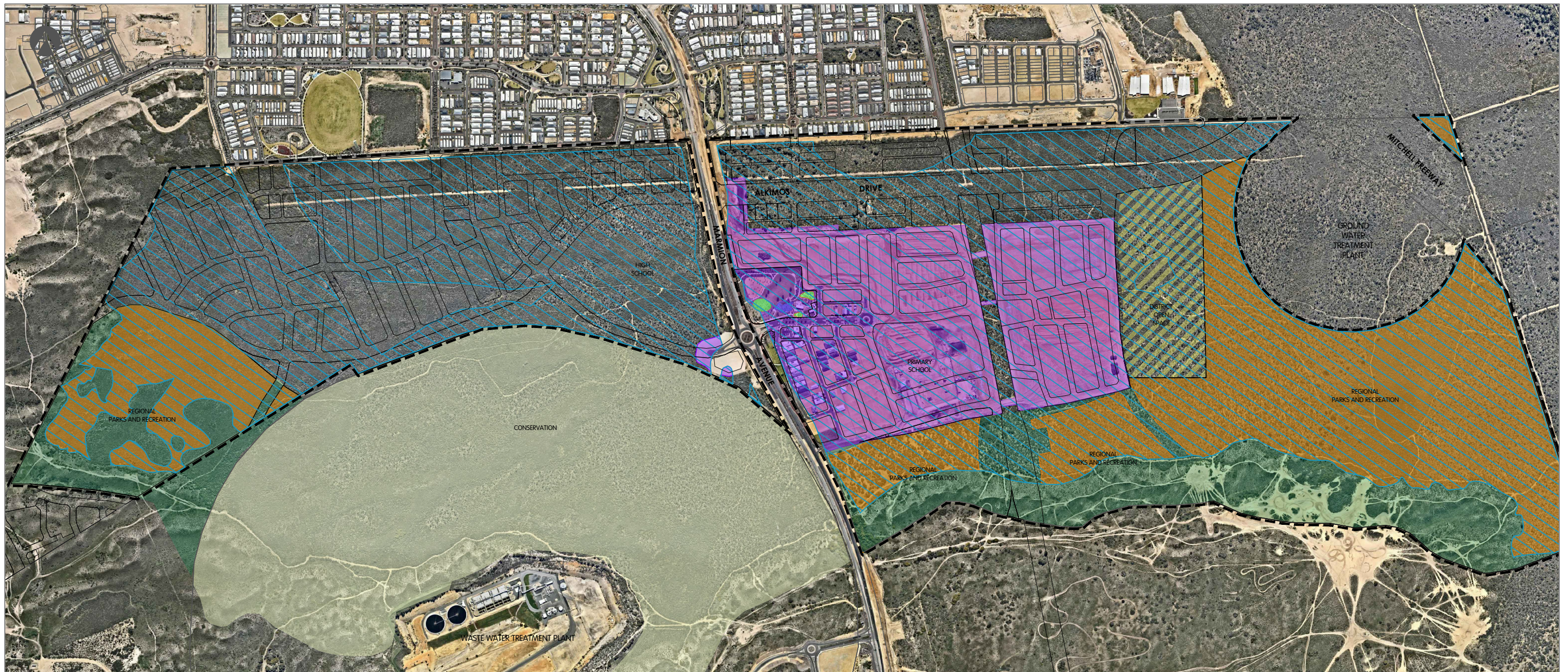
Alkimos Lots 9501 and 9502 cover a combined area of 480.4 ha (**Error! Reference source not found.**). The Project involves the provision of an urban regional centre including a commercial centre, residential housing, schools, public amenities and transport routes.

The Project area contains approximately 323.5 ha of potential foraging habitat for the endangered Carnaby's Black Cockatoo (CBC). Of this habitat, approximately 257 ha will be cleared for the development and approximately 66.64 ha retained within Parks and Recreation Reserves (PRR). A total of 103 potential breeding trees (>500 mm diameter at breast height [DBH]) have been identified within the project area. Of these trees, a minimum of 16 will be retained within the PRR and where possible additional trees will be preserved within the development area through incorporation into strategically located public open space and within road reserves.

Up to 22 of the 103 trees contain potentially suitable hollows for black cockatoos (nesting and roosting activities) and of these four will be retained within the PRR. An additional six trees that do not currently exhibit a DBH above 500 mm, are considered to be future potential habitat trees (*Eucalyptus gomphocephala* (Tuart) and *E. tottiana* (Coastal Blackbutt)) and will be retained within the PRR.

In addition, a total of 12 nest hollows (transplanted from trees prior to clearing) or artificial nest boxes have been installed strategically within the project area in proximity to foraging habitat.

The Project will be developed over the next 20-30 years, with development of the Alkimos City Centre taking place over the next 7-12 years. The initial precinct will be developed over 16 stages. The staging schedule will be subject to further refinement as development progresses.



LEGEND

-  STRUCTURE PLAN AREA
-  DISTRICT OPEN SPACE
-  CONSERVATION POS
-  REGIONAL PARKS AND RECREATION

-  CARNABY'S BLACK COCKATOO HABITAT
TOTAL AREA - 210.65ha
-  CARNABY'S BLACK COCKATOO - HABITAT RETENTION
66.66ha
-  CARNABY'S BLACK COCKATOO - ADDITIONAL HABITAT RETENTION
(OUTSIDE REGIONAL PARKS + RECREATION RESERVE) - 0.21ha
-  CARNABY'S BLACK COCKATOO - HABITAT LOSS
44.45ha (CLEARED)

REMAINING HABITAT - 99.33ha (UNCLEARED)

CADASTRAL INFORMATION
 SOURCE: MAPS
 YYMMDD: VARIED
 DWG REF: VARIED
 PROJECTION: PCG94

AERIAL PHOTOGRAPHY
 SOURCE: NEARMAPS
 YYMMDD: 190907

SIZE A3_1:10000



F	UPDATE ORTHO + FIGURES 191007	SB	RD
E	UPDATE ORTHO + FIGURES 191007	SB	RD
D	UPDATE ORTHO + FIGURES 181204	SB	RD
C	UPDATE ORTHO + FIGURES 181008	SB	RD
B	UPDATED LEGEND	180427	HH
A	BASE PLAN	180423	SB
REV	DESCRIPTION	YYMMDD	DRAWN APPR'D

CARNABY'S BLACK COCKATOO - SEPTEMBER 2019
Alkimos Vista, Alkimos
 City of Wanneroo

REF NO.	DRAW NO.	REV.
DLL CEN	RD1 091	F



2. Current status

Activities undertaken during the audit period (26 September 2018 to 25 September 2019) involved Stage 6 Earthworks and clearing to the east of the rail corridor within precinct 1 (Alkimos Central [Vista] – eastern side of Marmion Avenue).

Activities undertaken in the PRR during the audit period included:

- seed collection
- installation of gates to existing fence and erection of 1.8m high perimeter chain mesh fencing with rabbit skirt
- commencement of rehabilitation activities comprising of both direct seeding and seedling planting
- weed control and pest monitoring
- baseline dieback assessment
- installation of 12 artificial tree hollows.

3. Audit methodology

3.1 Audit plan

3.1.1 Purpose and scope

This document fulfils the requirement of condition 7 of EPBC 2015/7561. Condition 7 requires the person taking the action to publish an annual report for the previous twelve-month period, addressing compliance with each condition of EPBC 2015/7561; as follows:

‘Within three months of every 12-month anniversary of the commencement of the action, the person taking the action must publish a report on their website addressing compliance with each of the conditions of this approval, including implementation of any management plans as specified in the conditions. Documentary evidence providing proof of the date of publication and non-compliance with any of the conditions of this approval must be provided to the Department at the same time as the compliance report is published. Reports must remain on the website for the life of this approval. The person taking the action must continue to comply with this condition until such a time as agreed in writing by the Minister.’

This ACR addresses the audit period between 26 September 2018 and 25 September 2019. The ACR is due to be published on the Lendlease website by 25 December 2019.

Proponent management commitments included in the following management plans, required by conditions 2 and 3 respectively, were also assessed as part of the audit:

- CEMP (Rev 2, Strategen 2017a)
- PRRMP (Rev 2, Strategen 2017b).

Audit of the management plans involved assessment of the commitments to determine if the plan has been satisfactorily implemented.

3.1.2 Methodology

The audit was undertaken between September and December 2019 and involved a site inspection by Elizabeth Payne and Rebecca Mason, Strategen-JBS&G, on 24 September 2019, interviews with key members of the project team and a review of documentation to provide evidence to support the audit.

Table 3.1 provides an overview of the personnel consulted as part of the audit.

Table 3.1: Persons consulted during audit

Person	Position	Organisation
Laura Bowdell	Development Manager, Alkimos Vista	Lendlease Communities
Nadja Kampfhenkel	Sustainability Manager WA	Lendlease Communities
Peter Grose (unofficial capacity)	Managing Director	Tranen

3.2 Audit terminology

The ‘Status’ field of the audit tables (refer to Table 4.1, Appendix A and Appendix B) describes the implementation of actions and compliance with the approval. DEE (DotE 2014) has published Annual Compliance Report Guidelines and terminology from this guidance was applied in this audit (Table 3.2).

Table 3.2: Action implementation status

Status	Acronym	Description
Conditions of approval		
Compliant	C	Sufficient evidence is required to confirm that all the requirements of a condition have been met, including the implementation of management plans or other measures required by those conditions.

Status	Acronym	Description
		(Note Strategen-JBS&G also utilises the status 'Compliant (completed)' where a requirement has a finite period of application and has been determined to be satisfactorily completed).
Potentially Non-compliant	PNC	The requirements of a condition or elements of a condition, including the implementation of management plans and other measures, have not been met.
Not applicable	NA	The requirements of a condition or elements of a condition fall outside of the scope of the current reporting period. For example, a condition which applies to an activity that has not yet commenced.
Management Plans		
Conformant	C	Sufficient evidence is required to confirm that the requirements of the procedures, programs and/or management actions detailed within an Environmental Management Plan or similar document have been satisfactorily met.
Potentially Non-conformant	PNC	Considered to be any deviation from the procedures, programs and/or management actions detailed within an Environmental Management Plan or similar document.
Not applicable	NA	The requirements of a management action fall outside of the scope of the current reporting period. For example, a condition which applies to an activity that has not yet commenced.

Source: adapted from DotE (2014)

4. Audit results

The results of the audit of EPBC 2015/7561 are shown in Table 4.1.

The results of audit of conformance with the management actions contained within the CEMP and PRRMP are outlined in Appendix A and Appendix B respectively.

A total of 120 items were audited from EPBC 2015/7561, CEMP and PRRMP.

4.1 Compliance with EPBC 2015/7561 conditions

No potential non-compliances with conditions of EPBC 2015/7561 (Table 4.1) were identified during the audit. It was found that of the 16 key actions within the approval:

- eight were deemed compliant
- a further five were deemed compliant (complete)
- three were not applicable during the audit period.

4.1.1 Potential non-conformances with the Construction Environmental Management Plan

No potential non-conformances with the requirements of the CEMP (Appendix A) were identified during the audit.

4.1.2 Potential non-conformances with the Parks and Recreation Reserve Management Plan

Three potential non-conformances with the requirements of the PRMMP (Appendix B) were identified during the audit and related to the establishment of three baseline vegetation monitoring quadrats and timing of seed collection. During the site inspection, Tranen advised that establishment of quadrats were anticipated to occur 12 weeks post planting within the rehabilitation area. However, based on the timing requirement for this action it was deemed potentially non conformant. Additionally, seed collection did not occur prior to the clearing of the Project Area as required by the PRRMP and therefore was deem potentially non-conformant.

The auditors note that while potentially non-conformant findings have been made, they are technical, relating to timing, and as such did not result in an impact to the proposed rehabilitation program during the audit period.

Table 4.1: Compliance with Conditions of EPBC 2015/7561

Condition number	Condition	Evidence	Comment	Compliance status
1	The person taking the action must not clear more than 257 hectares of Carnaby's Black-Cockatoo habitat within the project area (shown as the proposed clearing area in Attachment A).	G_001_Lendlease_CBC cleared habitat 2019_092019	Clearing of approximately 14.5 ha of CBC habitat within precinct 1, east of rail corridor was undertaken during the audit period. At the end of the audit period, Lendlease remained within the limits of this condition with a total area of 44.45 ha of CBC habitat cleared within the development (G_001).	C
2	To mitigate impacts to Carnaby's Black-Cockatoos, the person taking the action must prepare and submit a Construction Environmental Management Plan (CEMP), for the approval of the Minister. The person taking the action must not commence clearing unless the Minister has approved the CEMP. The CEMP must include, but is not limited to: a. avoidance and mitigation measures to prevent impacts to Carnaby's Black-Cockatoo habitat following the commencement of the action, the measures must include measures to control site access, weeds, Phytophthora die back, erosion and dust b. performance indicators that measure the effectiveness of avoidance and mitigation measures to prevent impacts to Carnaby's Black-Cockatoo habitat c. details of performance monitoring, reporting and contingency measures if performance indicators are not met d. timeframes for the implementation of the above measures e. descriptions of the roles and responsibilities of personnel associated with implementing each of the above measures. If the Minister approves the CEMP then the approved CEMP must be implemented.	R_001_Strategen-JBS&G_Alkimos City Centre and Central CEMP_17072017 C_001_DEE_Alkimos CEMP PRRMP decision letter_26072017	The DEE advised on 26 July 2017 that the CEMP (Revision 2 [R_001]) met the requirements of condition 2 (C_001). The key actions of the CEMP were assessed during this audit period and it was found that of the 40 key actions identified within the CEMP: <ul style="list-style-type: none"> • 35 were assessed as conformant • there were no potential non-conformances • five were assessed not applicable. Refer to Appendix A for further detail. The objectives of the CEMP have been met and it has been determined that the plan has been implemented satisfactorily.	C
3	To mitigate impacts to Carnaby's Black-Cockatoos, the person taking the action must prepare and submit a Parks and Recreation Reserve Management Plan (PRRMP), for the approval of the Minister. The person taking the action must not commence clearing unless the Minister has approved the PRRMP. In relation to the Parks and Recreation Reserve, the PRRMP must include, but is not limited to: a. zoning and tenure arrangements b. measures to physically delineate 66.64 ha of Carnaby's Black Cockatoo habitat that will be retained within the Parks and Recreation Reserve c. an outline of how Carnaby's Black-Cockatoo habitat will be rehabilitated d. objectives, interim targets and completion criteria for the rehabilitation, including site preparation works, seedling planting program, success rates and details of replanting requirements, if success rates are not achieved e. management measures including fencing, access controls, weed and pest management, and the control of <i>Phytophthora cinnamomi</i> (dieback) spread f. management of nesting hollows, including hollows removed and relocated prior to clearing, and artificial nesting boxes <ul style="list-style-type: none"> i. A total of 12 artificial nest boxes or nesting hollows must be installed within the project area ii. The construction, positioning and erection of the artificial nest boxes must be in accordance with the WA DEC Publication "Artificial hollows for Carnaby's black cockatoo" (Groom, 2010) iii. The artificial nest boxes must be inspected at least annually to check for condition and evidence of black cockatoo usage for a period of five years. Repair of damage/deterioration, removal of bee colonies, replacement of mulch and/or sacrificial chewing posts, must be undertaken prior to the next breeding season. g. timeframes for implementing the above measures h. performance indicators that measure the effectiveness of measures to mitigate impacts to Carnaby's Black-Cockatoos i. details of performance monitoring, reporting and contingency measures if interim targets, completion criteria and performance indicators are not met j. descriptions of the roles and responsibilities of personnel associated with implementation of each of the above measures. If the Minister approves the PRRMP then the approved PRRMP must be implemented.	R_002_Strategen-JBS&G_Alkimos City Centre and Central PRRMP_17072017 C_001_DEE_Alkimos CEMP PRRMP decision letter_26072017	The DEE advised on 26 July 2017 that the PRRMP (Revision 2 [R_002]) met the requirements of condition 3 (C_001). The key actions of the PRRMP were assessed during this audit period and it was found that of the 64 key actions identified within the PRRMP: <ul style="list-style-type: none"> • 46 were assessed as conformant • three were potentially non-conformant • 15 were not applicable during the audit period. Refer to Appendix B for further detail. As Lendlease were found to be conformant with majority of the actions in the PRRMP, it has been determined that the plan has been implemented satisfactorily.	C
4.1	To offset the loss of Carnaby's Black-Cockatoo habitat, the person taking the action must, prior to the commencement of the action, provide the Department with: a) written evidence that an offset property in the vicinity of Gingin, Western Australia, that has at least 1138 ha of Carnaby's Black-Cockatoo habitat, has been transferred to the Western Australian Department of Parks and Wildlife (WA DPaW) to offset the action being undertaken within the project area;	R_003_Strategen-JBS&G_Alkimos City Central and Central (Vista) ACR 2018_13122018	This item was assessed as Compliant (complete) in the 2018 ACR (R_003).	C (completed)

Condition number	Condition	Evidence	Comment	Compliance status
4.2	b) a textural description and map clearly defining the locations and boundaries of the offset property. This information must be accompanied by the offset attributes and shapefiles.	R_003_Strategen-JBS&G_Alkimos City Central and Central (Vista) ACR 2018_13122018	This item was assessed as Compliant (complete) in the 2018 ACR (R_003).	C (completed)
4.3	c) written evidence that \$50,000 has been provided to the Kaarakin Black Cockatoo Conservation Centre.	R_003_Strategen-JBS&G_Alkimos City Central and Central (Vista) ACR 2018_13122018	This item was assessed as Compliant (complete) in the 2018 ACR (R_003).	C (completed)
5	Within 30 days after the commencement of the action, the person taking the action must advise the Department in writing of the actual date of commencement.	R_003_Strategen-JBS&G_Alkimos City Central and Central (Vista) ACR 2018_13122018	This item was assessed as Compliant (complete) in the 2018 ACR (R_003).	C (completed)
6	The person taking the action must maintain accurate records substantiating all activities associated with or relevant to the conditions of approval, including measures taken to implement the Plans and make them available upon request to the Department. Such records may be subject to audit by the Department or an independent auditor in accordance with section 458 of the EPBC Act, or used to verify compliance with the conditions of approval. Summaries of audits will be posted on the Department's website. The results of audits may also be publicised through the general media.	All evidence utilised to inform this ACR.	Accurate records for all applicable conditions have been maintained and were available at the time of the audit and following the audit (refer to other items in this table and appendices).	C
7	Within 3 months of every 12 month anniversary of the commencement of the action, the person taking the action must publish a report on their website addressing compliance with each of the conditions of this approval, including implementation of any management plans as specified in the conditions. Documentary evidence providing proof of the date of publication and non-compliance with any of the conditions of this approval must be provided to the Department at the same time as the compliance report is published. Reports must remain on the website for the life of this approval. The person taking the action must continue to comply with this condition until such time as agreed in writing by the Minister.	R_003_Strategen-JBS&G_Alkimos City Centre and Central (Vista) ACR 2018_13122018 C_002_Lendlease_2018 ACR website upload_14122018	The previous 2017/2018 compliance report (R_003) was due to be published by the 25 December 2018. Publishing of the ACR was confirmed by email (C_002) on 14 December 2018 and was published on the same day.	C
8	The person taking the action must notify the Department within seven business days of first becoming aware of potential non-compliance with a condition of the approval. The notification must include details of the potential non-compliance as well as any remediation activities that have been undertaken.	Management advice on 24 September 2019.	There were no potential non-compliances identified during the audit period.	C
9	Upon the direction of the Minister, the person taking the action must ensure that an independent audit of compliance with the conditions of approval is conducted and a report submitted to the Minister. The independent auditor must be approved by the Minister prior to the commencement of the audit. Audit criteria must be agreed to by the Minister and the audit report must address the criteria to the satisfaction of the Minister.	Management advice on 24 September 2019.	The Minister did not request an independent audit during the reporting period.	N/A
10 A	The person taking the action may choose to revise a Plan approved by the Minister under condition 2 or 3 without submitting it for approval under section 143A of the EPBC Act, if the taking of the action in accordance with the revised Plan would not be likely to have a new or increased impact. If the person taking the action makes this choice they must: a. notify the Department in writing that the approved Plan has been revised and provide the Department with an electronic copy of the revised Plan; b. implement the revised Plan from the date that the Plan is submitted to the Department; and c. for the life of this approval, maintain a record of the reasons the person taking the action considers that taking the action in accordance with the revised Plan would not be likely to have a new or increased impact.	C_003_Startegen-JBS&G_EPBC 2015 7561 Management Plan Revisions_16092019 C_004_DEE_Commonwealth response EPBC 2015_7561 Management Plan Revisions_23092019 C_017_Strategen-JBS&G_FW EPBC 20157561 Management Plan Revisions SECOFFICIAL_05112019 C_018_DEE_Implementation of Rev 4 Management Plans_05112019	Amendments to the CEMP and PRRMP were undertaken during the audit period. Revision 3 of both the CEMP and PRRMP were submitted to DEE on 16 September 2019 (C_003). Comments relating to the proposed amendments were received from DEE, subsequently requiring further amendments be made to the management plans (C_004). Revision 4 of the plans were submitted on 5 November 2019 (C_017), with DEE advising they were suitable for implementation (C_018). As the revised plans were not implemented during the audit period they will not be assessed as part of this ACR, revision 2 of both the CEMP and PRRMP remains applicable to this audit period.	C
10 B	10B If the Minister gives a notice to the person taking the action that the Minister is satisfied that the taking of the action in accordance with the revised Plan would be likely to have a new or increased impact, then: a. condition 10 does not apply, or ceases to apply, in relation to the revised Plan; and b. the person taking the action must implement the Plan approved by the Minister. To avoid any doubt, this condition does not affect any operation of conditions 10 and 10A in the period before the day the notice is given. At the time of giving the notice the Minister may also notify that, for a specified period of time, condition 10 does not apply for one or more specified Plan required under the approval.	Management advice on 24 September 2019.	The Minister did not provide notice during the audit period about a revised plan.	N/A
10 C	10C Conditions 10, 10A and 10B are not intended to limit the operation of section 143A of the EPBC Act which allows the person taking the action to submit a revised Plan to the Minister for approval.	N/A	This condition has been taken as a note.	N/A
11	If, at any time after 5 years from the date of this approval, the person taking the action has not commenced the action, then the person taking the action must not commence the action without the written agreement of the Minister.	R_003_Strategen-JBS&G_Alkimos City Central and Central (Vista) ACR 2018_13122018	This item was assessed as Compliant (Complete) in the 2018 ACR (R_003).	C (Complete)

Condition number	Condition	Evidence	Comment	Compliance status
12	Unless otherwise agreed to in writing by the Minister, the person taking the action must publish the Plans referred to in these conditions of approval on their website. The Plans must be published on the website within 1 month of being approved by the Minister or being submitted under condition 10.	C_001_DEE_Alkimos CEMP PRRMP decision letter_26072017 C_006_Lendlease_Alkimos Vista Management Plan Publication_21082017	The CEMP and PRRMP were approved on the 26 July 2017 (C_001) and were published on the Alkimos Central website on 21 August 2017 (C_006), within one month of being approved.	C

5. References

Department of the Environment (DotE) 2014, *Annual Compliance Report Guidelines*, Commonwealth of Australia, Canberra.

Strategen 2017a, *Construction Environmental Management Plan*, Alkimos City Centre and Central, Rev 2, report prepared for Lendlease, July 2017.

Strategen 2017b, *Parks and Recreation Reserve Management Plan*, Alkimos City Centre and Central, Rev 2, report prepared for Lendlease, July 2017.

Appendix A Compliance with Construction Environmental Management Plan

Table A.1: Construction Environmental Management Plan audit table

Audit code	Activity	Action	Timing	Evidence	Comment	Conformance status
4. Management measures						
CEMP 1	Site preparation and clearing	Induct all personnel working on site in relation to the following: <ul style="list-style-type: none"> restricted and/or 'no-go' areas, including the PRR and other restricted/protected areas on site key requirements of the PRRMP key requirements of the Construction Environmental Management Plan (CEMP) relating to protection of CBCs (hygiene measures, waste management, traffic management, erosion and dust control). 	Prior to commencing work on site	R_022_Georgiou_Alkimos Site Induction_27082018 R_023_Georgiou_Alkimos site induction checklists_17122018 R_024_Georgiou_Site induction register_10102019	Prior to personnel working on site, a site-specific induction is undertaken (R_022; R_023; R_024). The induction includes key requirements of the PRRMP and CEMP and any access restrictions/prohibited areas on site.	C
CEMP 2		Clearly mark CBC habitat proposed to be retained (as indicated on Figure 2) on construction drawings and delineated by survey pegs and/or temporary fencing along the entire stage boundary.	Pre- & during clearing Pre-construction	Management advice 24 September 2019 G_003_Cossill & Webley_Precinct 1 Bulk Earthworks East of Railway Reservation_09042018 G_004_Cossill & Webley_BEW Phase 2 Sheet 1 of 2_27112018 G_005_Cossill & Webley_BEW Phase 2 Sheet 1 of 2_27112018P_002_Strategen-JBS&G_PRR Fencing_24092019 R_027_Georgiou_CEMP Monthly Compliance Checklist_03052019 R_028_Georgiou_CEMP Monthly Compliance Checklist_08082019 P_002_Strategen-JBS&G_PRR Fencing_24092019	The PRR areas were identified on construction drawings as 'Conservation Areas' (G_003-G_005). Fencing has been erected around construction areas and was inspected monthly by Georgiou during construction activities to ensure it remained intact (R_027; R_028). Lendlease advised that the southern boundary of the PRR area was fenced with a 1 m buffer zone between the PRR and construction activities (P_002).	C
CEMP 3		Clearly mark trees proposed to be retained on construction drawings and by coloured tape within the Project site.	Pre- & during clearing Pre-construction	G_003_Cossill & Webley_Precinct 1 Bulk Earthworks East of the Railway Reservation_09042018	The 16 habitat trees to be retained are in the PRR and therefore not on construction drawings (G_003).	C
CEMP 4		Provide GPS co-ordinates of areas approved to be cleared and those required to be retained to the contractor to ensure no unapproved clearing is undertaken.	Pre- & during clearing Pre-construction	C_009_Cossill & Webley_Phase 2 BEW - current drawings and digital file confirmation_27112018 C_012_Lendlease_RE_EXT_Evidence request - Alkimos Vista EPBC Audit 1_29102019 R_034_Cossill & Webley_Construction Progress Meeting Minutes November 2018_28112018 R_035_Cossill & Webley_Construction Progress Meeting Minutes December 2018_12122018	Email correspondence shows that GPS coordinates and CAD drawings were provided to the clearing contractor (Georgiou) 26 November 2018. Lendlease advised that clearing preparation works commenced 26 November 2018, however, clearing did not begin until early December 2018 (C_012). This was confirmed upon review of site meeting minutes which indicated that no clearing had been undertaken up until 28 November (R_034) and 100% had been complete by 12 December 2018 (R_035).	C
CEMP 5		Install appropriate fencing or barriers to restrict access to unwanted tracks in PRR areas.	Pre-construction During construction	P_002_Strategen-JBS&G_PRR Fencing_24092019	Appropriate fencing of the PRR areas adjacent to cleared areas have been installed (P_002; R_008)	C

				R_008_Tranen_Alkimos Vista Post Activity Report_27032019		
CEMP 6		Install appropriate temporary signage to restrict unauthorised access to the PRR.	Pre-& during construction	Site inspection 24 September 2019.	Appropriate signage to restrict unauthorised access to the PRR area was observed during the site inspection.	C
CEMP 7		Ensure no domestic animals, traps or firearms are permitted onsite.	Pre-& during clearing	Management advice 24 September 2019 R_022_Georgiou_Alkimos Site Induction_27082018	The site induction mentions that domestic animals, traps and firearms are not permitted on site (R_022). Lendlease advised that there were no incidents recorded during the audit period regarding these issues.	C
CEMP 8		If clearing occurs during CBC breeding season (July – December), habitat tree assessments of potential breeding trees within 30 m from the construction area must be conducted to check for nesting hollows and use by CBCs.	Pre-clearing, during CBC breeding season – at least 7 days prior to clearing	R_036_Emerge_Black Cockatoo Assessment 2013_042013	Clearing was undertaken during the CBC breeding season (refer to CEMP 4), however, the black cockatoo habitat assessment conducted in April 2014 determined that there were no potential breeding trees within 30 m from the clearing area within this stage (R_036). The auditors recommend that potential CBC breeding trees are included on clearing plans. This will ensure the location of trees is easily identifiable and whether they are within 30 m of construction areas.	C
CEMP 9		If active CBC nests are located on site, the tree must be clearly demarcated and not cleared until fledglings have left the nest.	Pre-clearing, if active CBC nests are located.		Refer to CEMP 8.	N/A
CEMP 10	Waste management	Maintain work areas in a clean and tidy manner to ensure that feral and other pest species are not attracted to site.	Pre-& during construction	Site inspection 24 September 2019 R_027_Georgiou_CEMP Monthly Compliance checklist_03052019 R_029_Georgiou_Environmental checklists_28022019 R_042_Georgiou_Alkimos Projects HSE Plan_12032019	The auditors noted during the site inspection that the site was kept clean and tidy and free from drifting rubbish. During construction, the Georgiou compliance and environmental checklists (R_027; R_029) were undertaken and include checks to ensure the site remains free from waste and that the Waste Management Plan is continually implemented (R_042).	C
CEMP 11		All bins shall have secure lids which remain closed and will need to be emptied regularly.	Pre-& during construction	R_029_Georgiou_Environmental checklists_28022019 R_042_Georgiou_Alkimos Projects HSE Plan_12032019	Georgiou implement a Waste Management Plan on site (R_042) and undertake environmental inspections to confirm waste bins on site are available and adequate (R_029).	C
CEMP 12	Traffic management	A maximum speed limit of 40 km/h is permitted within the construction area and will be sign posted within the construction area.	Pre-& during construction	Management advice 24 September 2019. R_022_Georgiou_Alkimos Site Induction_27082018	Speed limits are communicated within the site induction and via signage on site (R_022).	C
CEMP 13	Weed and dieback management	Induct all construction personnel in relation to dieback and weeds risk, potential impacts and management.	Prior to commencing work on site and Pre-& during construction	R_022_Georgiou_Alkimos Site Induction_27082018 R_023_Georgiou_Alkimos site induction checklists_17122018 R_024_Georgiou_Site induction register_10102019	Dieback and weed management are discussed in the site-specific induction required to be undertaken by all site personnel (R_022; R_023; R_024).	C
CEMP 14		Undertake baseline dieback assessment of the PRR.	Prior to the commencement of work on site, where site works are adjacent (up to 50 m) of the PRR	R_031_Dieback Treatment Services_Phytophthora mapping of Stage One_082017 v2 R_008_Tranen_Alkimos Vista Post Activity Report_27032019 R_037_Terratree_Dieback Assessment of PRR area_22032019	A baseline dieback assessment was conducted in Stage 1 prior to commencement in August 2017, and covers a small portion of the PRR area, adjacent to Precinct 1 (R_031). No Phytophthora was identified on site during this assessment and no suspicious sites required sampling. Tranen commissioned Terratree, on behalf of Lendlease, to conduct a follow up dieback assessment within the PRR, 27 February 2019 (R_008). A report was provided 22 March 2019 (R_037) and included an assessment of the PRR area adjacent to current precinct 1 construction activities. The following was identified:	C

					<ul style="list-style-type: none"> 4.28 ha (56.8%) of the assessment area was classified as Uninfested vegetation 2.90 ha (37.1%) of the assessment area was classified as Uninterpretable due to it being a Quindalup dune vegetation system and lacking sufficient indicator species for interpretation completely Degraded vegetation measuring 0.35 ha (4.8%) was excluded from assessment. 	
CEMP 15		Make sure all vehicles; machinery and equipment are clean prior to entering site.	During construction	<p>R_022_Georgiou_Alkimos Site Induction_27082018</p> <p>R_025_Georgiou_Site Plant & Equipment Compliance Checklist_24012019</p> <p>R_026_Georgiou_Site Plant & Equipment Compliance Checklist_26042019</p>	Plant/equipment compliance checks are completed on arrival at site, as communicated in the site-specific induction (R_022). These checklists include a clean on entry inspection (R_025; R_026).	C
CEMP 16		Restrict access of vehicles to areas of construction to minimise the spread or introduction of weeds or pathogens. Access restrictions will be communicated through inductions, signage and fencing.	Pre- & during construction	<p>R_022_Georgiou_Alkimos site induction_27082018</p> <p>P_001_Strategen-JBSG_Construction fencing and stockpiles_24092019</p>	Clean-on entry and access restrictions are discussed in the site induction (R_022) and access is minimised through signage and installation of fences (P_001).	C
CEMP 17		In the event construction vehicles are required to enter PRR areas, all vehicles, machinery and equipment will be free of mud and soil prior to entering retained vegetation to prevent introduction and spread of weeds and pathogens.	At all times	<p>R_008_Tranen_Alkimos Vista Post Activity Report_27032019</p> <p>R_039_Tranen_JSHA Clean on Entry_062019</p>	Vehicles were required to access the PRR area to carry out preliminary revegetation activities (R_008). Job Site Hazard Analysis (JSHA) records provided by Tranen indicated that vehicles and equipment entering the PRR area were confirmed to be free of dieback and weeds (R_039).	C
CEMP 18		Clean on exit all vehicles, machinery, equipment and footwear if activities undertaken within any known dieback infested areas.	During construction and revegetation works.	<p>R_031_Dieback Treatment Services_Phytophthora mapping of Stage One_082017 v2</p> <p>R_037_Terratree_Dieback Assessment of PRR area_22032019</p>	No Phytophthora was seen during the dieback assessment and no suspicious sites required sampling (R_031; R_037).	C
CEMP 19		Ensure any fill/soil brought onto site is certified disease free.	During construction	<p>Management advice 24 September 2019.</p> <p>R_028_Georgiou_CEMP Monthly Compliance Checklist_08082019</p> <p>R_032_Lendlease_Form of Works Order_15112018</p>	Lendlease advised that there was no fill/soil brought onto site. The work order for Georgiou's scope of work indicates that earthworks would be undertaken using a 'cut to fill', confirming this (R_032).	N/A
CEMP 20	Erosion and dust control	Cleared areas will be stabilised to prevent wind-blown dust generating on site.	During construction	<p>P_001_Strategen-JBSG_Construction fencing and stockpiles_24092019</p> <p>R_028_Georgiou_CEMP Monthly Compliance Checklist_08082019</p> <p>R_035_Cossill & Webley_Construction Progress Meeting Minutes December 2018_12122018</p>	<p>The site inspection confirmed that the site was free from dust (P_001).</p> <p>The Georgiou monthly compliance checklist includes checks to confirm dust management is undertaken in accordance with the dust suppression plan and that weather is monitored to ensure adequate dust management measures are implemented (R_028) which includes the use of two water carts (R_035).</p>	C
CEMP 21		Water carts will be used in conjunction with earth moving activities and as required based on prevailing weather conditions at the time of construction works.	During construction	<p>R_027_Georgiou_CEMP Monthly Compliance Checklist_03052019</p> <p>R_028_Georgiou_CEMP Monthly Compliance Checklist_08082019</p>	Refer to CEMP 20	C
5.1 Monitoring Program						

CEMP 22	Monitoring Parameters	Integrity of PRR fencing, signage and other access restrictions/deterrents.	Fortnightly for the first six months following commencement of clearing and then quarterly thereafter during construction	R_003_Strategen-JBS&G_Alkimos City Centre and Central (Vista) ACR 2018_13122018 Tranen advice 24 September 2019 R_008_Tranen_Alkimos Vista Post Activity Report_27032019 R_010_Tranen_Alkimos Vista Post Activity Report_17092019	The auditors interpret the fortnightly monitoring requirement for this action to be relevant to the first six months following the commencement of clearing (26 September 2017) (R_003). Therefore, monitoring of PRR fencing, signage and other access deterrents is required to be undertaken quarterly during construction. Tranen advised that PRR fencing and signage was monitored opportunistically during the audit period during Tranen's site inspections (R_008; R_010), which were undertaken more frequently than the quarterly requirement. The auditors recommend that quarterly monitoring of the PRR fencing and signage is formally acknowledged in Tranen post activity reports and/or Georgiou's monthly compliance checklists/environmental inspections.	C
CEMP 23		Approved clearing boundaries.	Fortnightly during clearing, or as otherwise required by regulatory authorities as part of construction site inspections	R_029_Georgiou_Environmental checklists_28022019 R_030_Georgiou_Environmental checklists_28082019 R_034_Cossill & Webley_Construction Progress Meeting Minutes November 2018_28112018 R_042_Georgiou_Alkimos Projects HSE Plan_12032019	Clearing was completed between 28 November and 12 December (refer to CEMP 4) and took approximately seven days to complete (R_034), therefore, the fortnightly monitoring requirement was not applicable. The clearing boundaries are confirmed via monthly environmental checklists (R_029; R_030) and as per the Georgiou Site Health, Safety and Environmental Management Plan, clearing of vegetation does not commence until written permission is obtained from Lendlease (R_042).	C
CEMP 24		Total area cleared.	Annually during construction after clearing has commenced	G_001_Lendlease_CBC cleared habitat 2019_092019 G_002_Lendlease_CBC cleared habitat 2019_032019	Clearing plans are maintained by Lendlease (G_001; G_002), confirming that approximately 14.5 ha of CBC habitat was cleared during the audit period (G_001; G_002). No clearing has occurred in the PRR area.	C
CEMP 25		Evidence of unauthorised access within the PRR, e.g. observations of unauthorised vehicles or machinery, damage to fencing.	Opportunistically during other PRR inspections	Management advice 24 September 2019 C_015_Tranen_Pest Control Advice_01052019	Management advised that opportunistic visual inspections are undertaken by Tranen and if unauthorised access is identified, Tranen will notify Lendlease and it will be acted on accordingly (C_015).	C
CEMP 26		CBC activity / presence within nesting hollows.	Bi-annually (prior to and on completion of the CBC breeding season [July to December])	Management advice 24 September 2019	As clearing was not undertaken within 30 m of any nesting trees, no monitoring was undertaken. Additionally, monitoring of artificial hollows had not yet commenced. The artificial hollows were installed between 9-10 September 2019 (refer to PRRMP 42) and therefore monitoring will commence at the end of the CBC breeding season.	N/A
CEMP 27		CBC activity / presence within nesting hollows.	Within seven days of the commencement of clearing where clearing of trees with nesting hollows is proposed	Refer to CEMP 26.	Refer to CEMP 26.	N/A
CEMP 28		Record CBC injury/deaths occurring on site.	Opportunistically	Management advice 24 September 2019 R_027_Georgiou_CEMP Monthly Compliance checklist_03052019 R_028_Georgiou_CEMP Monthly Compliance Checklist_08082019	The procedure to record CBC injury and death is part of inspection checklists. No CBC deaths were recorded during the audit period.	C
CEMP 29		Visual observations of erosion.	Opportunistically during construction	R_029_Georgiou_Environmental checklists_28022019 R_030_Georgiou_Environmental checklists_28082019	Georgiou environmental checklist indicate that erosion and sediment control are acceptable.	C

CEMP 30	Visual observations of dust generation.	Opportunistically during construction	<p>Site inspection 24 September 2019 R_004_SERS_Dust Monitoring Summary Report October 2018_02102018</p> <p>R_005_SERS_Dust Monitoring Summary Report February 2019_01022019</p> <p>R_006_SERS_Dust Monitoring Summary Report March 2019_15032019</p> <p>R_007_SERS_Dust Monitoring Summary Report May 2019_20052019</p> <p>R_029_Georgiou_Environmental checklists_28022019</p> <p>R_030_Georgiou_Environmental checklists_28082019</p>	<p>Visual inspection during the site visit indicated that the project area was free from dust and dust monitoring reports indicated that dust was not an issue on site during the audit period (R_004-R_007).</p> <p>Visual observations of dust are undertaken opportunistically during construction and as part of the Georgiou environmental checklists (R_029; R_030).</p>	C
CEMP 31	Dust suppression equipment / actions.	Opportunistically during construction	<p>R_004_SERS_Dust Monitoring Summary Report October 2018_02102018</p> <p>R_005_SERS_Dust Monitoring Summary Report February 2019_01022019</p> <p>R_006_SERS_Dust Monitoring Summary Report March 2019_15032019</p> <p>R_007_SERS_Dust Monitoring Summary Report May 2019_20052019</p> <p>R_027_Georgiou_CEMP Monthly Compliance checklist_03052019</p> <p>R_028_Georgiou_CEMP Monthly Compliance Checklist_08082019</p> <p>R_029_Georgiou_Environmental checklists_28022019</p> <p>R_030_Georgiou_Environmental checklists_28082019</p>	Dust monitoring is undertaken throughout the project and reports indicated that dust was not an issue on site during the audit period (R_004-R_007). Georgiou's environmental checklists and monthly compliance checks include monitoring for dust controls and their adequacy (R_027-R_030).	C
CEMP 32	Visual observation of vegetation health.	Monthly during construction	<p>R_029_Georgiou_Environmental checklists_28022019</p> <p>R_030_Georgiou_Environmental checklists_28082019</p>	Georgiou environment checklists indicate that vegetation protection and health is undertaken monthly.	C
CEMP 33	Complaints register.	Opportunistically during construction	D_001_Georgiou_Alkimos Complaints Register_07112019	A complaints register has been maintained during the audit period with no complaints received since February 2018.	C
CEMP 34	Total area cleared. Clearing register.	Annually during construction after clearing has commenced	<p>G_001_Lendlease_CBC cleared habitat 2019_092019</p> <p>G_002_Lendlease_CBC cleared habitat 2019_032019</p>	Clearing of approximately 14.5 ha of CBC habitat was undertaken during the audit period, confirmed by clearing plans prepared by Lendlease (G_001; G_002).	C
CEMP 35	Vegetation health monitoring as described in the PRRMP.	As described in the PRRMP	<p>Tranen advice 24 September 2019</p> <p>R_003_Strategen-JBS&G_Alkimos City Centre and Central (Vista) ACR 2018_13122018</p>	Tranen advised vegetation health monitoring will coincide with the establishment of vegetation monitoring quadrats in October 2019 (refer to PRRMP 52).	N/A

CEMP 36		Hygiene register.	Quarterly during construction	R_025_Georgiou_Site Plant & Equipment Compliance Checklist_24012019 R_026_Georgiou_Site Plant & Equipment Compliance Checklist_26042019 R_027_Georgiou_CEMP Monthly Compliance Checklist_03052019 R_028_Georgiou_CEMP Monthly Compliance Checklist_03052019	Compliance checklists are completed for all plant and equipment prior to entry to site to ensure they are clean of soil and weed/dieback free (R_025; R_026). Hygiene practices are monitored monthly to ensure they are implemented during site works to restrict the spread of weeds and dieback (R_027; R_028). Although the action requires evidence of a hygiene register, the auditors conclude that provision of compliance checklists meets the intent of this monitoring parameter.	C
CEMP 37		Dieback infested areas mapped.	Prior to commencement of clearing	R_031_Dieback Treatment Services_Phytophthora mapping of Stage One_082017 v2	A baseline dieback assessment was conducted in Stage 1 prior to commencement in August 2017, and covers a small proportion of the PRR area, adjacent to Stage 1 (R_031). No Phytophthora was observed during this assessment and no suspicious sites required sampling.	C
7.2 Compliance Reporting						
CEMP 38	CEMP and technical review and adaptive management	CEMP review shall be initiated: <ul style="list-style-type: none"> following significant incidents where monitoring indicates that performance is not being achieved against KPIs periodically every 12 months. 	As required/every 12 months	Management advice 24 September 2019 R_003_Strategen-JBS&G_Alkimos City Centre and Central (Vista) ACR 2018_13122018 C_017_Strategen-JBS&G_FW EPBC 20157561 Management Plan Revisions SECOFFICIAL_05112019	Management advised that there were no significant incidents or performance issues against KPIs that triggered the review of the CEMP and that annual reviews are undertaken as part of the compliance audit process. The last annual compliance audit was conducted in 2018 and several opportunities for amendments to the CEMP were identified (R_003). Lendlease engaged Strategen-JBS&G to undertake these revisions which included: <ul style="list-style-type: none"> update to timing of the project to reflect anticipated development schedule addition of clearing commencement date incorporation of Lendlease as ultimately responsible for the implementation of CEMP provision of additional records to demonstrate relevant personnel have undertaken the site induction clarity regarding the timing of habitat tree inspections and ongoing monitoring update to timing of dieback assessments within the PRR to be advised revision of clean on entry monitoring frequency to ensure consistency with performance indicator. 	C
CEMP 39		Technical review of and evaluation of the monitoring program will be undertaken annually as part of the CEMP to ensure monitoring parameters, timing, location and outputs are addressing all key risk areas and management plan objectives adequately. The review will be undertaken by Lendlease and the Environmental Consultant with advice from technical specialists as appropriate (e.g. Dieback, vegetation and fauna specialists).	Annually		Refer to CEMP 38.	C
CEMP 40		To ensure uncertainty is reduced over time, and that plan outcomes/performance indicators are achieved, the following will be evaluated during review stages and incorporated into revisions of the CEMP: <ul style="list-style-type: none"> new and relevant data/information gained as a result of implementing the plan or from external sources (e.g. academic literature, EPBC Act policy statements) effectiveness of CEMP coordination, scheduling, monitoring, risk management, auditing and reporting activities risks, including in response to the risk level, changing circumstances or the results from implementing corrective actions effectiveness of management measures with significant levels of uncertainty, relatively long implementation timeframes, and upon which the plan is highly dependent consequences of significant environmental incidents. 	Annually		Refer to CEMP 38.	C

Appendix B Compliance with Parks and Recreation Reserve Management Plan

Table B.1: Parks and Recreation Reserve Management Plan audit table

Audit code	Activity	Action	Timing	Evidence	Comment	Conformance status
4.1 Implementation						
PRRMP 1		Management of the habitat in the retained vegetation area is proposed to be the responsibility of the WAPC.	At handover	R_038_Landgate_Certificate of Title PRR_02102018	Ownership of the PRR area has been transferred to the West Australian Planning Commission (WAPC [R_038]). Lendlease continue to manage retained vegetation until such time it is handed over to the City of Wanneroo.	C
4.2 Delineation of areas to be retained						
PRRMP 2	Management measures for delineating retention areas	Delineate areas of PRR along clearing boundaries through the installation of survey pegs and/or temporary fencing along the entire stage boundary.	Prior to clearing (each stage where adjacent to PRR)	P_001_Strategen-JBS&G_Construction fencing and stockpiles_24092019 P_002_Strategen-JBS&G_PRR Fencing_24092019	Fences were observed during the site inspection, 24 September 2019, around the PRR area adjacent to clearing activities and surrounding stage boundaries (P_001; P_002).	C
PRRMP 3		Install permanent fencing to delineate PRR.	Prior to the commencement of work on site, where site works are adjacent (up to 50 m) of the PRR	R_008_Tranen_Alkimos Vista Post Activity Report_27032019 P_002_Strategen-JBS&G_PRR Fencing_24092019	A 1.8 m high perimeter chain mesh fencing with rabbit skirt (R_008) with a pair of gates was erected around the rehabilitation area within the PRR. The whole PRR will be fenced as clearing stages adjacent to the PRR area progresses.	C
PRRMP 4		Restrict access to unwanted tracks in PRR areas through the installation of appropriate fencing or barriers.	During construction	R_010_Tranen_Alkimos Vista Post Activity Report_17092019 P_002_Strategen-JBS&G_PRR Fencing_24092019	Fencing around the PRR were observed during the site inspection on the 24 September 2019 (P_002). The integrity of the fencing and evidence of unauthorised access is monitored by Tranen opportunistically. There was one report during the audit period of unauthorised access into the PRR area likely from bike riders/4WDs through a breach in the fence. Tranen repaired the fence to prevent further intrusion (R_010).	C
PRRMP 5		Provide GPS co-ordinates of areas approved to be cleared and those required to be retained to the contractor to ensure no unapproved clearing is undertaken.	During construction	C_009_Cossill & Webley_Phase 2 BEW - current drawings and digital file confirmation_27112018 C_012_Lendlease_RE__EXT__Evidence request - Alkimos Vista EPBC Audit 1_29102019 R_034_Cossill & Webley_Construction Progress Meeting Minutes November 2018_28112018 R_035_Cossill & Webley_Construction Progress Meeting Minutes December 2018_12122018	Email correspondence shows that GPS coordinates and CAD drawings were provided to the clearing contractor (Georgiou) 26 November 2018. Lendlease advised that clearing preparation works commenced 26 November 2018, however clearing did not begin until early December 2018 (C_012). This was confirmed upon review of site meeting minutes which indicated that no clearing had been undertaken up until 28 November (R_034) and 100% had been complete by 12 December 2018 (R_035).	C
PRRMP 6		Install appropriate temporary signage to restrict unauthorised access to the PRR.	Pre and during construction	Site inspection 24 September 2019.	Appropriate signage to restrict unauthorised access to the PRR area was observed during the site inspection.	C
PRRMP 7		Install permanent signage to encourage public education and awareness on: <ul style="list-style-type: none"> where to access the PRR the importance of retained bushland the detrimental effects of rubbish, weeds and pathogens on biodiversity the importance of keeping to the designated walking tracks. 	During and post-construction up until handover	N/A	Permanent public education signage was not installed during the audit period as the development is not adjacent to the PRR, therefore, is not yet required.	N/A
4.3 Protection of retained vegetation						
PRRMP 8	Tenure and zoning	Vegetation to be retained is protected in perpetuity and vested with WAPC and reserved as conservation to be managed by CoW or DBCA.	By handover	R_038_Landgate_Certificate of Title PRR_02102018	Ownership of the PRR area has been transferred to the West Australian Planning Commission (WAPC [R_038]). Lendlease continue to manage retained vegetation until such time it is handed over to the City of Wanneroo.	C
4.4 Rehabilitation of PRR						
PRRMP 9	Contractor engagement	Appoint an experienced revegetation contractor(s) to undertake seed collection from 50 ha, weed control and other site preparation, and direct seeding/seedling planting.	Prior to the seed collection season (approximately October–April) before clearing commences	C_007_Landcorp_Seed collection approval_10122018 R_008_Tranen_Alkimos Vista Post Activity Report_27032019 R_009_Tranen_Alkimos Vista Post Activity Report_23072019	Tranen were appointed to undertake revegetation activities within the PRR, 22 November 2018 (C_007), including seed collection. The proposed seed collection was approved by the Department of Planning, Lands and Heritage (DPLH), 10 December 2018 (C_007) and was undertaken between 28 December 2018 and 13 March	C

				R_010_Tranen_Alkimos Vista Post Activity Report_17092019	2019 (R_008). Clearing of the project initially commenced 26 September 2017, therefore, this action has been assessed as conformant.	
PRRMP 10		Appoint an experienced pest control contractor to undertake measures to control pest fauna (i.e. grazing fauna such as rabbits), based on monitoring results.	Prior to commencement of planting	R_008_Tranen_Alkimos Vista Post Activity Report_27032019 C_015_tranen_Pest Control Advice_01052019	Tranen on behalf of Lendlease engaged Alpha Pests to undertake a pest inspection 1 May 2019 (prior to clearing). During the inspection, no evidence of rabbits were found, and a planned virus release was deemed unnecessary (C_015). Several fox tracks/burrows were identified, however, were not of concern to planting as they are not known grazing fauna (C_015). Additionally, a kangaroo inspection was undertaken by Tranen prior to the erection of PRR fencing. No kangaroos were encountered (R_008).	C
PRRMP 11		Appoint an experienced dieback contractor to undertake baseline dieback assessment of the PRR.	Prior to the commencement of work on site, where site works are adjacent (up to 50 m) of the PRR	R_031_Dieback Treatment Services_Phytophthora mapping of Stage One_082017 v2 R_008_Tranen_Alkimos Vista Post Activity Report_27032019 R_037_Terratree_Dieback Assessment of PRR area_22032019	A baseline dieback assessment was conducted in Stage 1 prior to commencement in August 2017, and covers a small portion of the PRR area, adjacent to Precinct 1 (R_031). No Phytophthora was identified on site during this assessment and no suspicious sites required sampling. Tranen commissioned Terratree, on behalf of Lendlease, to conduct a follow up dieback assessment within the PRR 27 February 2019 (R_008). A report was provided 22 March 2019 (R_037) and included an assessment of the PRR area adjacent to current precinct 1 construction activities. The following was identified: <ul style="list-style-type: none"> 4.28 ha (56.8%) of the assessment area was classified as Uninfested vegetation 2.90 ha (37.1%) of the assessment area was classified as Uninterpretable due to it being a Quindalup dune vegetation system and lacking sufficient indicator species for interpretation completely Degraded vegetation measuring 0.35 ha (4.8%) was excluded from assessment. 	C
PRRMP 12		Induct all personnel working on site in relation to the following: <ul style="list-style-type: none"> restricted and/or 'no-go' areas, including the PRR and other areas of protected vegetation identified on site key requirements of the PRRMP (including measures to protect CBC, hygiene measures etc) key requirements of the Construction Environmental Management Plan (CEMP). 	Prior to commencing work on site	R_022_Georgiou_Alkimos site induction_27082018 R_023_Georgiou_Alkimos site induction checklist_17122018 R_024_Georgiou_Site induction register_10102019	Personnel working on site undertook a site-specific induction which included the requirements listed (R_022-R_024).	C
PRRMP 13	Baseline assessment	Establish three baseline vegetation monitoring quadrats as described in Table 12.	Prior to seed collection (refer to Table 12)	Management advice 24 September 2019	Seed collection was undertaken within the entire PRR area between 28 December 2018 and 13 March 2019 (refer to PRRMP 24). Tranen advised 24 September 2019 that vegetation monitoring quadrats had not yet been installed, and were proposed to be installed in October 2019, 12 weeks post planting. Based on the timing of this condition requiring quadrats to be established 'prior to seed collection' the auditors have assessed this item as potentially non-conformant. However, while auditors note that this item has been assessed as a potential non-conformance, this is technical in nature and will not result in any impacts to the success of rehabilitation. Furthermore, the PRRMP has now been amended to clarify the timing of quadrat establishment.	PNC
PRRMP 14	Weed and pathogen control	Undertake weed control at least twice within PRR rehabilitation areas.	Prior to direct seeding / seedling planting and/ or commencement of rehabilitation activities	R_009_Tranen_Alkimos Vista Post Activity Report_23072019 R_010_Tranen_Alkimos Vista Post Activity Report_17092019	Herbicide application and manual weed removal is undertaken opportunistically by Tranen during site visits and is documented within post activity reports (R_009; R_010). The post activity reports indicate that weed control was conducted on multiple occasions between 20 May 2019 and 12 July 2019, prior to the commencement of direct seedling/seedling planting, which occurred between 21 June 2019 and 23 July 2019 (R_009).	C
PRRMP 15		Weed control methods to be in accordance with industry standards (e.g. RIAWA, DBCA standards).	During weed control	Management advice 24 September 2019 W_001_Tranen_RIAWA Membership_24102019	Tranen is a member of the Revegetation Industry Association of WA (RIAWA)(W_001) and advised they apply these standards during weed control activities.	C

PRRMP 16		Control methods for any weeds listed as Declared Pests to be undertaken in accordance with guidelines of the Department of Agriculture and Food WA.	During weed control		Tranen advised there are no declared pest weed species located within the PRR area.	N/A
PRRMP 17		Undertake ongoing maintenance weed control.	Biannually for five years from the initial planting completion date, or as advised by rehabilitation contractor	Refer to PRRMP 14	Refer to PRRMP 14.	C
PRRMP 18		Engage experienced dieback consultant to conduct baseline dieback survey of the rehabilitation areas.	Prior to rehabilitation works	R_008_Trannen_Alkimos Vista Post Activity Report_27032019	Tranen engaged a dieback consultant to conduct a survey of the PRR area, 27 February 2019, which included rehabilitation areas (R_008).	C
PRRMP 19		Conduct baseline dieback survey within PRR rehabilitation areas to establish any areas where dieback infestations currently occur.	Prior to rehabilitation works	Refer to PRRMP 18.	Refer to PRRMP 18.	C
PRRMP 20		If vehicles are required to enter PRR rehabilitation areas, all vehicles, machinery and equipment will be free of mud and soil prior to entering retained vegetation to prevent introduction and spread of weeds and pathogens.	During construction and rehabilitation works	R_008_Trannen_Alkimos Vista Post Activity Report_27032019 R_039_Trannen_JSHA Clean on Entry_062019	Vehicles were required to access the PRR area to carry out preliminary revegetation activities (R_008). Job Site Hazard Analysis (JSHA) records provided by Tranen indicated that vehicles and equipment entering the PRR area during revegetation activities were checked to confirm they were clean on entry (R_039).	C
PRRMP 21		Ensure any materials (soil, mulch etc) brought into PRR rehabilitation areas is certified dieback free.	During rehabilitation works	Management advice 24 September 2019 W_002_Plantrite_NIASA Accreditation_24102019	Tranen advised that seedling propagation was undertaken by Plantrite nursery which is NIASA certified (W_002) and that no other materials were brought into the PRR rehabilitation areas.	C
PRRMP 22	Pest control	Conduct pest control in PRR, based on monitoring detecting significant pest presence.	Ongoing as required	C_015_Trannen_Pest Control Advice_01052019	Pest monitoring undertaken in the PRR area did not identify a significant pest presence and therefore management measures were not required (C_015; refer to PRRMP 10).	C
PRRMP 23	Seed collection	Compile list of appropriate species to be planted in rehabilitation areas based on flora and vegetation surveys and baseline assessment.	Prior to seed collection	R_002_Strategen-JBS&G_Alkimos City Centre and Central PRRMP_17072017 R_009_Trannen_Alkimos Vista Post Activity Report_23072019	Tranen prepared a list of suitable species to be planted prior to seed collection in the PRR area (R_009) in accordance with the requirements of the PRRMP based on species identified in vegetation surveys and the baseline assessment of the area (R_002). The area is being rehabilitated using plants known to be primary feeding species for CBC (R_009).	C
PRRMP 24		Prior to clearing within the Project Area, collect seed from 50 ha of CBC habitat, targeting any suitable foraging species that are suitable to the vegetation types within the rehabilitation area.	October to April prior to clearing of Project Area First collection preferably approximately 1½ years prior to first seedling planting	R_003_strategen-JBS&G_Alkimos City Centre and Central (Vista) ACR 2018_13122018 R_008_Trannen_Alkimos Vista Post Activity Report_27032019	Seed collection was undertaken within the entire PRR area between 28 December 2018 and 13 March 2019. Collection times were spread over 13 full working days and were dependent on species availability (R_008). As seed collection did not commence until 28 December 2019 and clearing commenced 26 September 2017 (R_003) this item has been assessed as potentially non-conformant. However, while auditors note that this item has been assessed as a potential non-conformance, this is technical in nature and will not result in any impacts to the success of rehabilitation. Furthermore, the PRRMP has now been amended to include revised timing parameters for seed collection.	PNC
PRRMP 25		If sufficient seed is not available from within the Project Area, additional collection areas within 50 km of the Project Area will be sourced.	December to March prior to seeding	R_009_Trannen_Alkimos Vista Post Activity Report_23072019	Tranen advised that seed from the Alkimos Beach seed bank was sourced for use, which is within 50km of the Project Area (R_009).	C
PRRMP 26		Appropriate licences to be obtained from DBCA for seed collection.	Prior to seed collection	R_040_DPaW_Seed Collection License_14112018 R_041_DPaW_Seed Collection License_18102018	Appropriate seed collection licenses are held by Tranen for the period that seed was collected (R_040; R_041).	C
PRRMP 27	Seedling planting	Determine areas suitable for rehabilitation.	Prior to seedling planting	R_008_Trannen_Alkimos Vista Post Activity Report_27032019	Areas for rehabilitation were selected by Tranen in consultation with Lendlease and Strategen-JBS&G (R_008).	C
PRRMP 28		Propagate seedlings from seed collected from Project Area.	September to May following seed collection	Tranen advice 24 September 2019 R_009_Trannen_Alkimos Vista Post Activity Report_23072019	Tranen advised that propagation of seedlings was undertaken by Plantrite nursery, following seed collection. Seeds were appropriately treated to promote germination and bulked up with clean washed sand to facilitate distribution 21 June 2019 (R_009).	C
PRRMP 29		Undertake seedling planting including an initial seed/seedling mix of: <ul style="list-style-type: none"> at least 15 species two primary CBC feeding species 	During seedling planting	R_009_Trannen_Alkimos Vista Post Activity Report_23072019	Seedling planting was undertaken between 12 - 23 July 2019 and involved planting of over 50,432 seedlings (R_009). The site was divided into eight zones for planting over eight days, with the seedlings for planting each day batched at Tranen to enable even distribution (R_008). Of the seedlings planted:	C

		<ul style="list-style-type: none"> a mix of overstorey and mid/understorey species as appropriate. 			<ul style="list-style-type: none"> there were 36 species six are primary CBC feeding species there is a mix of overstorey and mid/understorey species. 	
PRRMP 30		Protect seedlings with tree guards if required or apply other suitable measures, i.e. baiting.	During seedling planting	Tranen advice 24 September 2019 Site inspection 24 September 2019 R_008_Trannen_Alkimos Vista Post Activity Report_27032019 P_002_Strategen-JBS&G_PRR Fencing_24092019	Tranen advised that this was not necessary as the rehabilitation area was fenced (R_008), which the auditors confirmed during the site inspection (P_002).	C
PRRMP 31		Ensure all plants used in rehabilitation are suitable as foraging, breeding or roosting habitat for Carnaby's black-cockatoo as listed by Groom (2011; Appendix 1) or other species suitable for the vegetation types being rehabilitated within PRR areas.	During rehabilitation	R_009_Trannen_Alkimos Vista Post Activity Report_23072019	As indicated by the Tranen post activity report, plant species used during rehabilitation included plants known to be primary feeding species for CBC (R_009).	C
PRRMP 32		Procure seedlings of suitable provenance to conduct top-up planting in any areas not meeting 80% survival rates.	When monitoring indicates 80% survival rates have not been met	N/A	Tranen advised that monitoring has not yet commenced within rehabilitated areas and therefore survival rates have not been determined.	N/A
PRRMP 33	Direct seeding	Determine whether any areas are suitable for direct seeding.	Prior to seeding	R_009_Trannen_Alkimos Vista Post Activity Report_23072019	Direct seeding in the PRR was undertaken 21 June 2019 in areas deemed suitable as identified by Tranen (R_009)	C
PRRMP 34		Determine seed mix based on target vegetation type, seed availability and planned seedling program.	Prior to seeding	R_009_Trannen_Alkimos Vista Post Activity Report_23072019	Tranen advised that the seed mix (R_009) was based on target vegetation type, seed availability and planned seedling program. The seed mix was topped up with seed collected from the nearby Alkimos Beach development.	C
PRRMP 35		Treat seed to break dormancy factors, as appropriate for species.	Prior to seeding	R_009_Trannen_Alkimos Vista Post Activity Report_23072019	Seed was appropriately treated to promote germination (R_009).	C
PRRMP 36		Prepare soil with any methods necessary to increase germination success (e.g. scarification), as required.	Prior to seeding	R_009_Trannen_Alkimos Vista Post Activity Report_23072019	Surface preparation was undertaken 20 June 2019 and involved ripping and scarification of areas for direct seeding (R_009).	C
PRRMP 37		Place mulch or brushing where appropriate to increase success of revegetation, in any areas subject to erosion.	Prior to seeding	Management advice 24 September 2019	Tranen advised that there were no areas subject to erosion and therefore mulch/brush material was not required.	N/A
PRRMP 38		Undertake direct seeding based on seed mix, in consideration of target vegetation type, seed availability and planned seedling program.	During seeding		Refer to PRRMP 33 and PRRMP 34.	C
4.5 Retention and management of Carnaby's Black Cockatoo nesting habitat						
PRRMP 39	Management measures for retention and management of black cockatoo nesting habitat	Identify and mark trees with hollows to be removed and relocated to PRR areas.	Prior to clearing of Project Area	Management advice 24 September 2019 R_033_Emerge_Alkimos Precinct 1 Fauna Assessment Report_082017 C_016_Emerge_Salvaged hollows suitability_29052019	A fauna inspection was undertaken for precinct 1 in August 2017 (R_033) prior to clearing. The inspection identified seven potential breeding trees (two with hollows) within precinct 1, however, no evidence to suggest CBC were breeding on site. All potential breeding trees were removed, and the two hollows were retained for re-use in the PRR. No additional areas were cleared during the current audit period that supported breeding trees and hollows. Lendlease advised during the site inspection that these hollows were deemed not suitable for reuse. Email correspondence from Emerge, 29 May 2019, confirmed this (C_016) and an additional two cockatubes were purchased to offset the unsuitable salvaged hollows.	C
PRRMP 40		Remove hollows from trees identified as having hollows suitable for relocation.	Prior to clearing of Project Area		Refer to PRRMP 39	C
PRRMP 41		Engage contractor to undertake hollow construction and installation works.	During rehabilitation works	Management advice 24 September 2019	Lendlease advised that Emerge was engaged to undertake hollow construction and installation works (refer to PRRMP 42).	C
PRRMP 42		Install relocated natural hollows and artificial nesting boxes within PRR areas in accordance with requirements outlined in Groom (2010; Appendix 1).	During rehabilitation works	G_006_Emerge_Artificial hollow locations_01102019 R_011_Thomas Contracting Services_Cockatube box 412_09092019	A total of 12 artificial nesting boxes were installed 9-10 September 2019 within the PRR (G_006) during the audit period (R_011-R_021).	C

				R_012_Thomas Contracting Services_Cockatube box 413_10092019 R_013_Thomas Contracting Services_Cockatube box 414_09092019 R_014_Thomas Contracting Services_Cockatube box 420_09092019 R_015_Thomas Contracting Services_Cockatube box 421_10092019 R_016_Thomas Contracting Services_Cockatube box 422_10092019 R_017_Thomas Contracting Services_Cockatube box 423_09092019 R_018_Thomas Contracting Services_Cockatube box 424_10092019 R_019_Thomas Contracting Services_Cockatube box 426_10092019 R_020_Thomas Contracting Services_Cockatube boxes 427 and 396_09092019 R_021_Thomas Contracting Services_Cockatube box 428_09092019		
PRRMP 43		Induct all personnel working on site in relation to restricted and/or 'no-go' areas, including the PRR and other areas of protected vegetation identified on site.	Prior to commencing work on site	Refer to PRRMP 12	Refer to PRRMP 12	C
PRRMP 44		Where necessary, hollows will be repaired, cleared of bee colonies and any other actions to ensure condition is maintained.	When monitoring indicates hollows are damaged or otherwise unviable for use by CBC	Management advice 24 September 2019	As clearing was not undertaken within 30 m of any nesting trees, no monitoring was undertaken. Additionally, monitoring of artificial hollows had not yet commenced. The artificial hollows were installed between 9-10 September 2019 (refer to PRRMP 42) and therefore monitoring will commence at the end of the CBC breeding season.	N/A
PRRMP 45		Hollows will be inspected prior to and upon completion of the CBC breeding season for condition and evidence of black cockatoo usage.	Bi-annually (prior to and on completion of the CBC breeding season [July to December])	Refer to PRRMP 44	Refer to PRRMP 44	N/A
5.1 Monitoring Program						
PRRMP 46	Monitoring Parameter	Condition of fencing to delineate the area of retained vegetation, and barriers used to block unwanted access tracks.	Fortnightly for the first 6 months following commencement of clearing and then quarterly thereafter during construction	Tranen advice 24 September 2019 P_001_Strategen-JBSG_Construction fencing and stockpiles_24092019 P_002_Strategen-JBS&G_PRR Fencing_24092019 R_027_Georgiou_CEMP Monthly Compliance checklists_28022019 R_028_Georgiou_CEMP Monthly Compliance checklists_08082019	The auditors interpret 'retained vegetation' as referenced in this action to be relevant to vegetation within the PRR. Appropriate fences have been installed and maintained to restrict unauthorised access to retained vegetation in the PRR area (P_001; P_002). The fortnightly monitoring requirement for this action is relevant to the first 6 months following the commencement of clearing (26 September 2017; R_003). Therefore, monitoring of the condition of PRR fencing, signage and other access deterrents is required to be undertaken quarterly during construction. Tranen confirm that PRR fencing and signage was monitored opportunistically during the audit period during Tranen's site inspections (R_008; R_010), which were undertaken more frequently than the quarterly requirement. The auditors recommend that quarterly monitoring of the condition of fencing is included in Tranen post activity reports and/or Georgiou's monthly compliance checklists/environmental inspections.	C
PRRMP 47		Approved clearing boundaries.	Fortnightly during clearing, or as otherwise required by regulatory authorities as part of construction site inspections	R_029_Georgiou_Environmental checklists_28022019 R_030_Georgiou_Environmental checklists_28082019 R_034_Cossill & Webley_Construction Progress Meeting Minutes November 2018_28112018 R_042_Georgiou_Alkimos Projects HSE Plan_12032019	Clearing was completed between 28 November and 12 December (refer to CEMP 4) and took approximately seven days to complete (R_034), therefore, the fortnightly monitoring requirement was not applicable. The clearing boundaries are confirmed via monthly environmental checklists (R_029; R_030) and as per the Georgiou Site Health, Safety and Environmental Management Plan, clearing of vegetation does not commence until written permission is obtained from Lendlease (R_042).	C

PRRMP 48	Total area cleared.	Annually during construction after clearing has commenced	G_001_Lendlease_CBC cleared habitat 2019_092019 G_002_Lendlease_CBC cleared habitat 2019_032019	Clearing of approximately 14.5 ha of CBC habitat was undertaken during the audit period, confirmed by clearing plans prepared by Lendlease (G_001; G_002). No clearing was undertaken in the PRR area.	C
PRRMP 49	Evidence of unauthorised access within the PRR, e.g. observations of unauthorised vehicles or machinery, damage to fencing.	Opportunistically during other PRR inspections	R_008_Tranen_Alkimos Vista Post Activity Report_27032019	Opportunistic visual monitoring is undertaken, indicating that there was a breach of the PRR fence during the audit period, however, Tranen advised that this was repaired immediately (R_008).	C
PRRMP 50	Integrity of PRR fencing, signage and other access restrictions/deterrents.	Fortnightly for the first 6 months following commencement of clearing and then quarterly thereafter during construction	R_027_Georgiou_CEMP Monthly Compliance Checklist_03052019 R_028_Georgiou_CEMP Monthly Compliance Checklist_08082019	Refer to PRRMP 46	C
PRRMP 51	Status of retained vegetation.	At handover to CoW or DBCA	N/A	Not required at this stage.	N/A
PRRMP 52	Establish three baseline vegetation monitoring quadrats within remnant native vegetation of the same vegetation type as rehabilitation areas to determine: <ul style="list-style-type: none"> native species composition of remnant native vegetation within PRR areas to determine suitable species for use in rehabilitation list of CBC foraging, roosting and nesting habitat species present within remnant native vegetation within PRR areas to determine suitable species for use in rehabilitation baseline levels of weed infestation including list of weed species currently present within PRR areas to inform general PRR condition monitoring. 	Prior to seed collection	Refer to PRRMP 13	Refer to PRRMP 13	PNC
PRRMP 53	Establish other permanent quadrats or transects as required to assist PRR condition monitoring and maintenance.	As required	N/A	Baseline vegetation monitoring quadrats have not yet been installed (refer to PRRMP 13) and therefore it is not yet known whether other permanent quadrats or transects are required.	N/A
PRRMP 54	Vegetation health including: <ul style="list-style-type: none"> weed density significant plant pathogens predation by significant pests 	Opportunistically Annually in spring following commencement of construction until handover to CoW or DBCA	Tranen advice 24 September 2019 R_003_Strategen-JBS&G_Alkimos City Centre and Central (Vista) ACR 2018_13122018	Tranen advised vegetation health monitoring will coincide with the establishment of vegetation monitoring quadrats in October 2019 (refer to PRRMP 52).	N/A
PRRMP 55	Monitoring of seed collection records.	Annually, during planting/direct seeding	Management advice 24 September 2019 R_009_Tranen_AlkimosVista Post Activity Report_23072019	Lendlease advised that monitoring of seed collection records is undertaken as part of ongoing collections. The seed bank statement is included in the Tranen post activity report (R_009) which is provided to Lendlease for review.	C
PRRMP 56	Establish three baseline vegetation monitoring quadrats (10 m by 10 m) within remnant native vegetation of the same vegetation type as rehabilitation areas to determine: <ul style="list-style-type: none"> native species composition of remnant native vegetation within PRR areas to determine suitable species for use in rehabilitation list of CBC foraging, roosting and nesting habitat species present within remnant native vegetation within PRR areas to determine suitable species for use in rehabilitation baseline levels of weed infestation including list of weed species currently present within PRR areas to inform general PRR condition monitoring. 	Monitoring annually in spring following rehabilitation, for five years	Refer to PRRMP 52	Refer to PRRMP 52. Vegetation quadrats have not been established and therefore annual monitoring has not yet commenced. Tranen advised that this monitoring will be undertaken in October 2019 and therefore will be assessed in the next audit period.	N/A
PRRMP 57	Percentage cover of weed species within vegetation monitoring quadrats within the retained vegetation.	Monitoring annually in spring following rehabilitation, for five years	Refer to PRRMP 56	Refer to PRRMP 56	N/A
PRRMP 58	Undertake monitoring of: overstorey and mid/understorey species (number and species types) number of primary feeding species for CBC.	Monitoring annually in spring following rehabilitation, for five years	Refer to PRRMP 56	Refer to PRRMP 56	N/A

PRRMP 59		Number of nesting hollows installed within the Project Area.	During hollow monitoring (bi-annually)	Refer to PRMMP 44	Refer to PRRMP 44	N/A
PRRMP 60		CBC presence within nesting hollows.	Bi-annually (prior to and on completion of the CBC breeding season [July to December])	Refer to PRMMP 44	Refer to CEMP 26	N/A
PRRMP 61		Evidence of damage/deterioration, presence of bee colonies.	Monitor evidence of damage/deterioration, presence of bee colonies	Refer to PRMMP 44	Refer to CEMP 26	N/A
7.1 Review and audit						
PRRMP 62	PRRMP and technical review and adaptive management	<p>PRRMP review shall be initiated:</p> <ul style="list-style-type: none"> following significant incidents where monitoring indicates that performance is not being achieved against KPIs periodically every 12 months. 	As required/every 12 months	<p>Management advice 24 September 2019</p> <p>R_003_Strategen-JBS&G_Alkimos City Centre and Central (Vista) ACR 2018_13122018</p> <p>C_017_Strategen-JBS&G_FW EPBC 20157561 Management Plan Revisions SECOFFICIAL_05112019</p>	<p>Management advised that there were no significant incidents or performance issues against KPIs that triggered the review of the PRRMP and that annual reviews are undertaken as part of the compliance audit process. The last annual compliance audit was conducted in 2018 and several opportunities for amendments to the PRRMP were identified (R_003). Lendlease engaged Strategen-JBS&G to undertake these revisions which included:</p> <ul style="list-style-type: none"> update to timing of the project to reflect anticipated development schedule completion criteria has been amended to reflect amendments made to the monitoring requirements monitoring of vegetation health within the PRR has been revised to clarify location and duration update timing parameters for seed collection change to rehabilitation target toward meeting the overall density target, rather than survival rate of seedlings only removal of the 50% ratio required for CBC species to non-CBC species used in rehabilitation update to monitoring requirements of nest boxes change to signage requirements for access to PRR inclusion of direct seeding and seedling planting into proposed rehabilitation completion criteria. <p>A revised PRRMP (revision 4) was submitted to DEE 5 November 2019 (C_017).</p>	C
PRRMP 63		Technical review of and evaluation of the monitoring program will be undertaken annually as part of the PRRMP to ensure monitoring parameters, timing, location and outputs are addressing all key risk areas and management plan objectives adequately. The review will be undertaken by Lendlease and the Environmental Consultant with advice from technical specialists as appropriate (e.g. Dieback, vegetation and fauna specialists).	Annually		Refer to PRRMP 62	C
PRRMP 64		<p>To ensure uncertainty is reduced over time, and that plan outcomes/performance indicators are achieved, the following will be evaluated during review stages and incorporated into revisions of the PRRMP:</p> <ul style="list-style-type: none"> new and relevant data/information gained as a result of implementing the plan or from external sources (e.g. academic literature, EPBC Act policy statements) effectiveness of PRRMP coordination, scheduling, monitoring, risk management, auditing and reporting activities risks, including in response to the risk level, changing circumstances or the results from implementing corrective actions effectiveness of management measures with significant levels of uncertainty, relatively long implementation timeframes, and upon which the plan is highly dependent 	Annually		Refer to PRRMP 62	C

		<ul style="list-style-type: none">consequences of significant environmental incidents.				
--	--	--	--	--	--	--

6. Limitations

Scope of services

This report ("the report") has been prepared by Strategen-JBS&G_ in accordance with the scope of services set out in the contract, or as otherwise agreed, between the Client and Strategen-JBS&G_. In some circumstances, a range of factors such as time, budget, access and/or site disturbance constraints may have limited the scope of services. This report is strictly limited to the matters stated in it and is not to be read as extending, by implication, to any other matter in connection with the matters addressed in it.

Reliance on data

In preparing the report, Strategen-JBS&G_ has relied upon data and other information provided by the Client and other individuals and organisations, most of which are referred to in the report ("the data"). Except as otherwise expressly stated in the report, Strategen-JBS&G_ has not verified the accuracy or completeness of the data. To the extent that the statements, opinions, facts, information, conclusions and/or recommendations in the report ("conclusions") are based in whole or part on the data, those conclusions are contingent upon the accuracy and completeness of the data. Strategen-JBS&G_ has also not attempted to determine whether any material matter has been omitted from the data. Strategen-JBS&G_ will not be liable in relation to incorrect conclusions should any data, information or condition be incorrect or have been concealed, withheld, misrepresented or otherwise not fully disclosed to Strategen-JBS&G_. The making of any assumption does not imply that Strategen-JBS&G_ has made any enquiry to verify the correctness of that assumption.

The report is based on conditions encountered and information received at the time of preparation of this report or the time that site investigations were carried out. Strategen-JBS&G_ disclaims responsibility for any changes that may have occurred after this time. This report and any legal issues arising from it are governed by and construed in accordance with the law of Western Australia as at the date of this report.

Environmental conclusions

Within the limitations imposed by the scope of services, the preparation of this report has been undertaken and performed in a professional manner, in accordance with generally accepted environmental consulting practices. No other warranty, whether express or implied, is made.

The advice herein relates only to this project and all results conclusions and recommendations made should be reviewed by a competent person with experience in environmental investigations, before being used for any other purpose.

Strategen-JBS&G accepts no liability for use or interpretation by any person or body other than the client who commissioned the works. This report should not be reproduced without prior approval by the client, or amended in any way without prior approval by Strategen-JBS&G, and should not be relied upon by other parties, who should make their own enquiries.

© JBS&G Australia Pty Ltd T/A Strategen-JBS&G

This document is and shall remain the property of Strategen-JBS&G. The document may only be used for the purposes for which it was commissioned and in accordance with the Terms of Engagement for the commission. Unauthorised use of this document in any form whatsoever is prohibited.

Document Distribution

Rev No.	Copies	Recipient	Date
A	1 x Electronic	Lendlease	26 November 2019
0	1 x Electronic	Lendlease - for publication and DEE notification	10 December 2019

Document Status

Rev No.	Author	Reviewer	Approved for Issue		
		Name	Name	Signature	Date
A	R Mason	E Payne	K Moyle		26 November 2019

