



Stage 21 & 22

Stage	Lot No.	Address	Area (m ²)	Dimensions (m)	Comments	Price*	Expected Titles	On Hold
22	1550	Avoca Lane	225	7.5 x 30	Rear Loader	\$329,000	Aug 25	
22	1549	Avoca Lane	225	7.5 x 30	Rear Loader	\$329,000	Aug 25	
22	1555	Avoca Lane	225	7.5 x 30	Rear Loader	\$330,000	Aug 25	
21	1933	Mettams Way	315	10.5 x 25		\$375,000	Feb 25	
21	2009	Mirabilis Ave	375	12.5 x 30		\$405,000	Feb 25	
21	1593	Douglas Road	375	12.5 x 30		\$405,000	Feb 25	
21	1500	Douglas Road	375	12.5 x 30		\$405,000	Feb 25	
22	1511	Leighton Drive	315	10.5 x 30		\$389,000	Aug 25	
21	1594	Douglas Road	375	12.5 x 30		\$407,000	Feb 25	
21	1595	Douglas Road	375	12.5 x 30		\$407,000	Feb 25	
22	1380	Merewether Avenue	375	12.5 x 30		\$419,000	Aug 25	
22	1513	Leighton Drive	475		Corner	\$469,000	Aug 25	

Finance Eligibility Letter or Pre-Approval required to hold Lot.

\$5,000* Land Deposit payable after Contract Signing.

Prices Includes: Front Landscaping, Colorbond Fencing Package, & NBN Readiness.

*All information in the Price List for Alkimos is subject to change at the absolute discretion of Stockland WA Development Pty Ltd ("Stockland") without notice to any prospective purchaser and does not form part of an offer or contract of sale. BAL assessments are provided for indicative purposes only. If the land is subject to a BAL, ensure that you have obtained your own independent BAL assessment from a qualified professional. The Price List for Alkimos may have been prepared by third parties, and Stockland makes no representations or warranties as to the accuracy or currency of the Price List. You accept that lots may be sold at prices more or less than that stipulated in the Price List. Neither Stockland nor its agents accept any responsibility for its errors in or omissions from the information. Visit <https://www.stockland.com.au/product-terms-and-conditions/vacant-land-terms-and-conditions> for more information.





Stage 21



Finance Eligibility Letter or Pre-Approval required to hold Lot.

Limited time \$5,000* Land Deposit payable after Contract Signing.

Prices Includes: Front Landscaping, Colorbond Fencing Package, & NBN Readiness.

*All information in the Price List for Alkimos is subject to change at the absolute discretion of Stockland WA Development Pty Ltd ("Stockland") without notice to any prospective purchaser and does not form part of an offer or contract of sale. BAL assessments are provided for indicative purposes only. If the land is subject to a BAL, ensure that you have obtained your own independent BAL assessment from a qualified professional. The Price List for Alkimos may have been prepared by third parties, and Stockland makes no representations or warranties as to the accuracy or currency of the Price List. You accept that lots may be sold at prices more or less than that stipulated in the Price List. Neither Stockland nor its agents accept any responsibility for its errors in or omissions from the information. Visit <https://www.stockland.com.au/product-terms-and-conditions/vacant-land-terms-and-conditions> for more information.





Stage 22



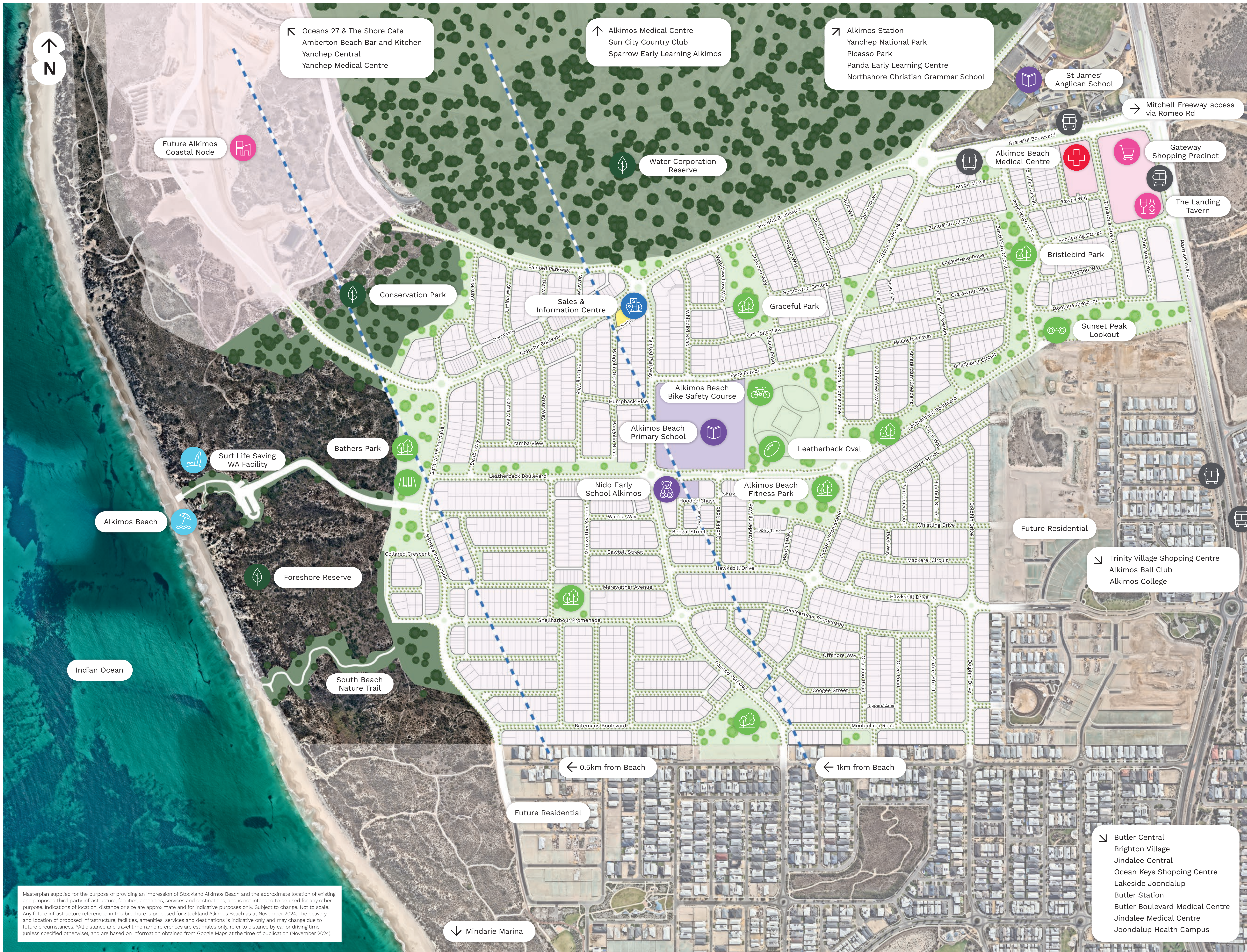
Finance Eligibility Letter or Pre-Approval required to hold Lot.

\$5,000* Land Deposit payable after Contract Signing.

Prices Includes: Front Landscaping, Colorbond Fencing Package, & NBN Readiness.

*All information in the Price List for Alkimos is subject to change at the absolute discretion of Stockland WA Development Pty Ltd (“Stockland”) without notice to any prospective purchaser and does not form part of an offer or contract of sale. BAL assessments are provided for indicative purposes only. If the land is subject to a BAL, ensure that you have obtained your own independent BAL assessment from a qualified professional. The Price List for Alkimos may have been prepared by third parties, and Stockland makes no representations or warranties as to the accuracy or currency of the Price List. You accept that lots may be sold at prices more or less than that stipulated in the Price List. Neither Stockland nor its agents accept any responsibility for its errors in or omissions from the information. Visit <https://www.stockland.com.au/product-terms-and-conditions/vacant-land-terms-and-conditions> for more information.





Shopping and Amenities

- The Gateway Shopping Precinct – 1.4km
- The Landing Tavern – 1.5km
- Trinity Village Shopping Centre – 2.2km
- Butler Central – 3.9km
- Brighton Village Shopping Centre – 4.6km
- Jindalee Central – 4.7km
- Oceans 27 and The Shore Cafe – 5.9km
- The Amberton Beach Bar and Kitchen – 6.9km
- Ocean Keys Shopping Centre – 9.7km
- Mindarie Marina – 10.5km
- Yancheep Central – 11.2km
- Lakeside Joondalup – 18.7km

Public Transport and Accesses

- Alkimos Train Station and Future Alkimos Regional Centre – 2.6km
- Mitchell Freeway Access Point at Romeo Road – 3.6km
- Butler Train Station – 3.7km
- Marmion Avenue/Graceful Boulevard Bus Stops

Medical Centres

- Alkimos Beach Medical Centre – 1.2km
- Alkimos Medical Centre – 4.2km
- Butler Boulevard Medical Centre – 4.6km
- Jindalee Medical Centre – 4.6km
- Yancheep Medical Centre – 11.6km
- Joondalup Health Campus – 19.1km

Leisure and Sporting Clubs

- Alkimos Pirates Lacrosse Club – 450m
- Alkimos Football Club – 650m
- Beach Access – 1km
- Alkimos Beach – 1.3km
- Alkimos Surf Life Saving Club – 1.3km
- Alkimos Ball Club – 3.4km
- Alkimos Tigers Junior Rugby League – 5.6km
- Yancheep National Park – 13.4km
- Sun City Country Club Golf Course – 14.3km

Parks and Open Spaces

- Alkimos Beach Interpretive Signage Trail
- Alkimos Beach Bike Safety Course – 400m
- Graceful Park – 550m
- Leatherback Oval – 750m
- Alkimos Beach Fitness Park – 850m
- Bathers Park – 1km
- Bristlebird Park – 1.2km
- Sunset Peak Lookout – 1.4km
- Picasso Park – 2.9km

Education and Childcare Centres

- Nido Early School Alkimos – 500m
- Sparrow Early Learning Alkimos – 4.2km
- Panda Early Learning Centre – 5.2km
- Alkimos Beach Primary School – 1.2km
- St James' Anglican School – 1.3km
- Alkimos College – 2.3km
- Northshore Christian Grammar School – 5.6km

Sales & Information Centre

Cnr Painted Pkwy & Graceful Blvd, Alkimos WA 6038

Legend

- Residential
- Retail
- Education

Masterplan supplied for the purpose of providing an impression of Stockland Alkimos Beach and the approximate location of existing and proposed third-party infrastructure, facilities, amenities, services and destinations, and is not intended to be used for any other purpose. Indications of location, distance or size are approximate and for indicative purposes only. Subject to change. Not to scale. Any future infrastructure referenced in this brochure is proposed for Stockland Alkimos Beach as at November 2024. The delivery and location of proposed infrastructure, facilities, amenities, services and destinations is indicative only and may change due to future circumstances. *All distance and travel timeframe references are estimates only, refer to distance by car or driving time (unless specified otherwise), and are based on information obtained from Google Maps at the time of publication (November 2024).