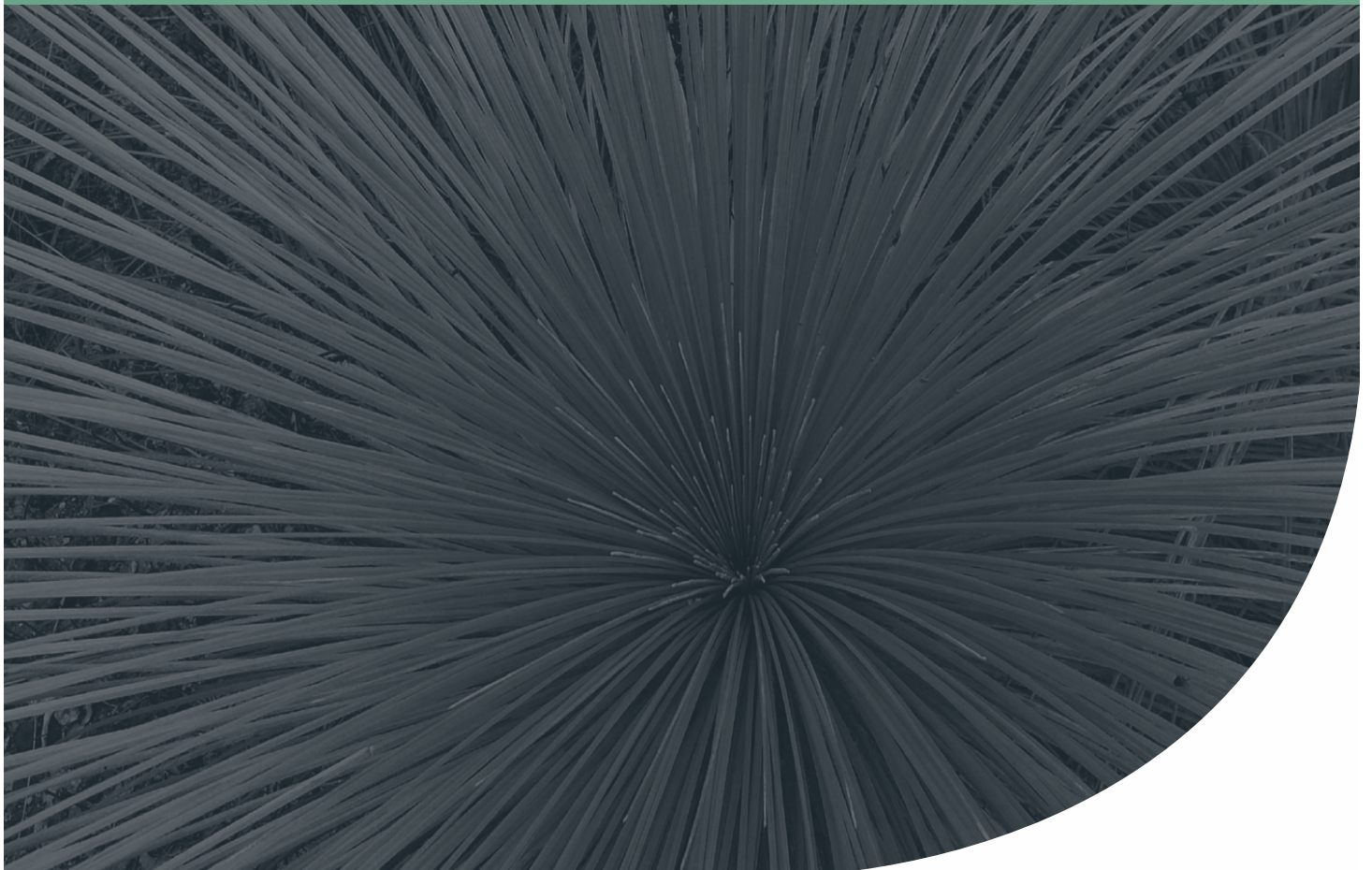


# 2022 Annual Compliance Report – EPBC 2011/5902

Alkimos Beach

Project No: EP22-084(01)

**Prepared for Lendlease Communities (Alkimos) Pty Ltd  
November 2022**



# 2022 Annual Compliance Report – EPBC 2011/5902

Alkimos Beach



## Document Control

<b>Doc name:</b>		2022 Annual Compliance Report – EPBC 2011/5902 Alkimos Beach			
<b>Doc no.:</b>		EP22-084(01)--003			
Version	Date	Author		Reviewer	
1	October 2022	Toni Burbidge	TB	Andreas Biddiscombe	ADB
		Louis Winer	LSW		
Issued to Lendlease.					

# 2022 Annual Compliance Report – EPBC 2011/5902

## Alkimos Beach



## Table of Contents

<b>1</b>	<b>Introduction</b> .....	<b>1</b>
1.1	Purpose .....	1
1.2	Scope .....	1
1.3	Project background .....	1
1.4	Approved variations to EPBC Act approval conditions .....	2
1.4.1	CAMP implementation .....	2
<b>2</b>	<b>Project status</b> .....	<b>3</b>
<b>3</b>	<b>Audit methodology</b> .....	<b>4</b>
3.1	Revisions to management plans .....	4
3.2	Audit approach .....	4
3.2.1	CAMP audit methodology .....	4
3.3	Audit terminology .....	5
<b>4</b>	<b>Audit findings</b> .....	<b>6</b>
4.1	Compliance with EPBC 2011/5902 conditions .....	6
4.1.1	Conformance with the Conservation Area Management Plan .....	6
4.1.2	Conformance with the Foreshore Management Plan .....	6
4.1.3	Conformance with the Precinct Landscape and Revegetation Plan .....	9
<b>5</b>	<b>References</b> .....	<b>19</b>
5.1	General references .....	<b>Error! Bookmark not defined.</b>

## List of Tables

Table 1:	Summary of variation to conditions .....	2
Table 2:	Key personnel consulted during the audit .....	4
Table 3:	Audit terminology .....	5
Table 4:	Foreshore CBC habitat revegetation performance .....	8
Table 5:	Precinct Landscape and Revegetation Plan CBC habitat planting performance .....	9
Table 6:	Compliance within conditions in EPBC 2011/5902 .....	10

# 2022 Annual Compliance Report – EPBC 2011/5902

## Alkimos Beach



## Appendices

### Appendix A

CBC clearing area (Roberts Day 2021)

### Appendix B

Conformance with the Conservation Area Management Plan

### Appendix C

Conformance with the Foreshore Management Plan

### Appendix D

Conformance with the Precinct Revegetation and Landscape Plan

### Appendix E

Plant schedules

### Appendix F

Tracking against planting targets

### Appendix G

Precinct and Staging Plan

## List of Abbreviations

Table A1: Abbreviations – General terms

General terms	
ACR	Annual Compliance Report
CAMP	Conservation Area Management Plan
CBC	Carnaby's black cockatoo
EPBC Act	<i>Environmental Protection and Biodiversity Conservation Act 1999</i>
FMP	Foreshore Management Plan
POS	Public open space
PRLP	Precinct Landscape and Revegetation Plan



# 2022 Annual Compliance Report – EPBC 2011/5902

Alkimos Beach



## 1 Introduction

### 1.1 Purpose

This Annual Compliance Report (ACR) has been prepared for the purpose of fulfilling the requirements of condition 3 of *Environment Protection and Biodiversity Conservation Act 1999* (EPBC Act) approval 2011/5902 (EPBC 2011/5902). Condition 3 requires the proponent to publish an ACR addressing compliance with each condition of EPBC 2011/5902; as follows:

*Unless otherwise agreed to in writing by the Minister, the person taking the action must, within three months of every 12 month anniversary of the commencement of the action:*

- a. publish a report on their website addressing compliance with each of the conditions of this approval, including implementation of any management plans as specified in the conditions; and*
- b. provide to the Department documentary evidence of the date of publication and non-compliance with any of the conditions of this approval.*

### 1.2 Scope

This ACR addresses the audit period between 6 September 2021 to the 5 September 2022 for the conditions associated with EPBC 2011/5902. This ACR will be published on the Lendlease website by 5 December 2022.

As part of the preparation of the ACR the relevant environmental management commitments/ obligations included in the following management plans were assessed to determine if the plans have been satisfactorily implemented:

- Conservation Area Management Plan (CAMP) (Revision 4, September 2019) (RPS 2019b) - required by condition 10.
- Foreshore Management Plan (FMP) (Revision 5, September 2019) (RPS 2019a) - required by condition 11.
- Precinct Landscape and Revegetation Plan (PLRP) (Version 6, April 2020) (Lendlease 2020) – required by condition 12.

Where a previous ACR found a condition or management commitment to be 'Completed' that finding was accepted as being applicable to the current audit period, unless circumstances to the contrary were identified, in which case the item was re-assessed.

### 1.3 Project background

Lendlease Communities (Alkimos) Pty Ltd (Lendlease) in partnership with LandCorp (now DevelopmentWA), is developing the Alkimos Beach Urban Development (the project) located approximately 40 km northwest of the Perth Central Business District.

On 30 June 2012, the project was approved by the Federal Minister for the Environment under s130(1) and 133 of the EPBC Act, with Lendlease designated as the approval holder. Construction of the project subsequently commenced on 5 September 2012.

## 2022 Annual Compliance Report – EPBC 2011/5902

Alkimos Beach



The project involves clearing approximately 97 ha of native vegetation, including 21.14 ha of Carnaby's black cockatoo (CBC) habitat, for urban development on Lot 1004, 80L Romeo Road and 2611 Marmion Avenue, Alkimos, see **Appendix A**.

#### 1.4 Approved variations to EPBC Act approval conditions

Since the project was conditionally approved in June 2012, a number of variations to conditions have been approved, as detailed in **Table 1**.

*Table 1: Summary of variation to conditions*

Variation No.	Approval Date	Description
1	24 August 2012	Amending condition 14 to change the timeframe required for the condition.
2	13 June 2013	This variation was triggered by the de-listing of the Graceful Sun-Moth from the threatened species list defined under the EPBC Act. The variation includes the revocation of conditions 9, 15, 16, 17, Attachment B and changes to relevant definitions referring to those removed conditions. This variation also includes replacement of conditions 10 and 11.
3	19 August 2016	This variation includes to the replacement of condition 4 of EPBC 2011/5902 and the addition of a definition 'new or increased action'. The new condition 4 introduces the 'Revised Management Plan condition' whereby minor updates that do not result in a 'new or increased impact' to the protected matter can be made to management plans without requiring approval from the Minister.
4	30 November 2018	This variation includes: <ul style="list-style-type: none"> <li>• The replacement of condition 3, whereby the Minister can approve the cessation of the annual compliance reports.</li> <li>• The revoking of condition 5, which relates to the Minister having the ability to request specified revisions to the management plans.</li> <li>• Inclusion of condition 12A, whereby a request can be made to the Minister to cease the implementation of a management plan and the maintenance of records for that plan.</li> </ul>

##### 1.4.1 CAMP implementation

The CAMP's three-year rehabilitation monitoring period was completed within the 2017-2018 audit period, and therefore the rehabilitation elements of the CAMP have ceased.

On 14 October 2019, the proponent made a request to the Minister under condition 12A of EPBC 2011/5902 to cease implementation, maintenance, and reporting of the CAMP within the **eastern portion** of the plan area, as this area is intended to be handed over to the City of Wanneroo in the near future.

The Minister's Delegate approved this request on 4 March 2020. As such, this ACR only reports on implementation of the CAMP within the western portion of the plan area, which is delineated by the western-most and smallest of the two 'conservation area management boundary' areas shown in Figure B of the CAMP.

Lendlease will continue to ensure that the objective of the CAMP is met (through weed control and informal inspections) until the western portion is handed over to the City of Wanneroo as the long-term land manager.

## 2022 Annual Compliance Report – EPBC 2011/5902

Alkimos Beach



## 2 Project status

Activities undertaken during the audit period (6th September 2021 to 5th September 2022) involved activities relating to Precincts 1, 2, 3 and 4, CAMP study area and the FMP area of the Alkimos Beach development, and can be summarised as:

- During the audit period 0.12 ha of CBC foraging habitat was cleared (within Precinct 3), with total clearing to date being 20.99 ha. See **Appendix A**.
- Civil works during the audit period have generally been limited to the construction of roads and subdivided lots within Precinct 3, as well as general bulk earthworks in Precincts 2 and 3.
- CAMP study area:
  - Monitoring within the CAMP study area, and taking appropriate action as required, including:
    - Informal inspections to assess issues related to weeds, signs of the presence of feral pests, bushfire damage, soil erosion, and the entry of unauthorised vehicles and motorcycles.
    - Repairing fencing if required.
- FMP area:
  - Monitoring within the FMP area and taking appropriate action as required, including:
    - Weed control.
    - Replacing signage.
    - Repairing fencing.
    - Site inspections for rabbits.
    - Informal inspections to assess issues related to weeds, signs of the presence of feral pests, bushfire damage, soil erosion control, access, condition of fencing and the entry of unauthorised vehicles and motorcycles
- PLRP Study area
  - Monitoring and maintenance within public open space (POS) areas dedicated to CBC foraging species (known herein as 'CBC POS') including informal inspections of CBC POS.

## 2022 Annual Compliance Report – EPBC 2011/5902

Alkimos Beach



### 3 Audit methodology

The audit reported on in this ACR, addresses the period between 6 September 2021 and 5 September 2022 for the conditions and commitments of EPBC 2011/5902.

#### 3.1 Revisions to management plans

There were no revisions to the management plan during this period. For this ACR, the latest versions of the CAMP (V4), FMP (V5) and PLRP (V6) have been assessed for compliance.

#### 3.2 Audit approach

The 2022 compliance audit was undertaken in between August and November 2022 and involved:

- A site inspection by Andreas Biddiscombe and Toni Burbidge from Emerge Associates on 29 August 2022.
- Interviews with key members of the project team.
- Review of documentation provided by key members of the project team.

Key personnel consulted as part of the audit are listed in **Table 2**.

*Table 2: Key personnel consulted during the audit*

Personnel	Organisation and Position
Desiree Nelson	Lendlease Assistant Development Manager
Laura Bowdell	Lendlease Development Manager
Peter Grose	Tranen Managing Director Project Revegetation Consultant
Emma Carr	Emerge Associates Senior Landscape Architect Project Landscape Architect

##### 3.2.1 CAMP audit methodology

As outlined in **Section 1.4.1**, the CAMP has been implemented, therefore ongoing actions within the CAMP area are done voluntarily by Lendlease.

The proponent's request to cease implementation, maintenance, and reporting of the eastern CAMP area has been approved. This audit will assess the ongoing voluntary monitoring of the western CAMP area.

This audit of the CAMP will focus on assessing the ongoing objectives of the CAMP, specifically the measures undertaken to achieve the following CAMP objective:

- *Minimise the impact of activities that could degrade Carnaby's Black-Cockatoo habitat.*

## 2022 Annual Compliance Report – EPBC 2011/5902

Alkimos Beach



As such evidence required to demonstrate ongoing implementation of the CAMP is considered to include the following (for the western CAMP area), as related to Condition 10c-f of EPBC 2011/5902:

- Any actions taken to manage weeds and feral pests.
- Any actions taken relating to bushfire prevention and management.
- Any actions taken to monitor and manage erosion.
- Any actions taken to monitor and manage access.

### 3.3 Audit terminology

The 'Compliance Status' field of the audit tables describes the implementation of actions and compliance with the approval. **Table 3** details the terminology that has been applied in this audit.

Table 3: Audit terminology

Compliance status term	Abbreviation	Description
Regulatory requirements - applicable to the conditions of approval		
Compliant	C	When all the requirements of a condition have been met, including the implementation of management plans or other measures required by those conditions.
Completed	CLD	Where a requirement with a finite period of application has been satisfactorily completed.
Not Applicable	N/A	Where the requirements of a condition or elements of a condition fall outside of the scope of the current audit period. For example, a condition which applies to an activity that has not yet commenced.
Non-compliant	NC	Where the requirements of a condition or elements of a condition, including the implementation of management plans and other measures, have not been met.
Corporate policies, standards and procedures – applicable to the CAMP, FMP and PLRP		
Conformant	C	When sufficient evidence has been provided to confirm that the requirements within a corporate policy, standard and/or procedure (including an environmental management plan) has been satisfactory implemented.
Completed	CLD	Where a requirement with a finite period of application has been satisfactorily completed.
Not Applicable	N/A	Where the requirements of a corporate policy, standard and/or procedure (including an environmental management plan) fall outside of the scope of the current audit period. For example, a management plan which applies to an activity that has not yet commenced.
Non-conformant	NC	Where the requirements within a corporate policy, standard and/or procedure (including an environmental management plan) have not been satisfactory implemented.

\*adapted from OEPA (2012b, 2012a); DoEE (2014); Graham A Brown & Associates (2014); OEPA (Undated)

## 2022 Annual Compliance Report – EPBC 2011/5902

Alkimos Beach



### 4 Audit findings

The results of the 2022 audit include assessment of compliance/conformance with:

- EPBC 2011/5902 conditions, provided in **Table 6**.
- CAMP (condition 10) objectives, provided in **Appendix B**.
- FMP (condition 11) management actions, provided in **Appendix C**.
- PLRP (condition 12) management actions, provided in **Appendix D**.

A total of 116 items were audited from EPBC 2011/5902, CAMP, FMP and PLRP.

#### 4.1 Compliance with EPBC 2011/5902 conditions

No non-compliances with the EPBC 2011/5902 conditions were noted during the audit period, as documented in **Table 6**.

##### 4.1.1 Conformance with the Conservation Area Management Plan

Based on the audit methodology specified in **Section 3.2.1**, no non-conformances with the requirements of the CAMP were identified during the audit, as documented in **Appendix B**.

A section of fencing in the western CAMP area was observed to have been cut, which Lendlease are arranging to be repaired/replaced. Whilst the management requirements of the CAMP are no longer formally in effect, the proposed corrective measures are still consistent with those outlined in the CAMP.

##### 4.1.2 Conformance with the Foreshore Management Plan

No non-conformances with the requirements of the FMP were identified during the audit, as documented in **Appendix C**.

Table 1 of the FMP required a five-year monitoring period of rehabilitation works including weed management, feral pest management, bushfire management, erosion control and access management. The first report was provided in Spring 2015 as documented in the 2016 ACR. Tranen provided the final monitoring report in Autumn 2021. Therefore, the formal audit period for the FMP has ceased. Informal monitoring of the Table 4 items will continue until handover to the City of Wanneroo occurs.

In accordance with the FMP (refer to audit item FMP 60), this ACR is required to contain a foreshore CBC habitat revegetation section which will include material that relates to the following:

- Revegetation completion criteria and weed monitoring.
- Revegetation and weed contingency actions if required.
- Erosion monitoring within the foreshore area.
- Report observations of feral pests.
- Temporary fencing, pathways and signage of the revegetation area.
- Report any fire incidences in the foreshore and the response.



## 2022 Annual Compliance Report – EPBC 2011/5902

Alkimos Beach



The information required to address FMP 60 is provided in **Table 4**, and is based on advice from Lendlease (proponent), Tranen (revegetation contractor) and Georgiou (civil construction contractor).

## 2022 Annual Compliance Report – EPBC 2011/5902

Alkimos Beach



Table 4: Foreshore CBC habitat revegetation performance

Action item	Comment for audit period																				
Revegetation completion criteria and weed monitoring	<p>Monitoring of the FMP completion criteria commenced in Spring 2015, and has since been completed and ceased. Monitoring results for the last two years of the formal monitoring period are reported below. See the previous ACRs for the previous years' monitoring results.</p> <table border="1"> <thead> <tr> <th>Year after planting</th> <th>Targets</th> <th>Spring 2020 (overall mean)</th> <th>Autumn 2021 (overall mean)</th> </tr> </thead> <tbody> <tr> <td>Survival (established plant density – both planting and seeding)</td> <td>90% (Yr. 1) (equivalent to 1.8 plants/m<sup>2</sup>)  70% (Yr. 2) (equivalent to 1.4/m<sup>2</sup>)</td> <td>See average plant density</td> <td>See average plant density</td> </tr> <tr> <td>Average plant density (plants/m<sup>2</sup>)</td> <td>1.7 to 2 plants /m<sup>2</sup></td> <td>2.1</td> <td>2.1</td> </tr> <tr> <td>Plant coverage (% area of visual ground cover measured by a botanist/ revegetation consultant)</td> <td>25% (Yr. 1) 50% (Yr. 2)</td> <td>54%</td> <td>60%</td> </tr> <tr> <td>Weeds coverage (%)</td> <td>10%</td> <td>4%</td> <td>1%</td> </tr> </tbody> </table> <p>Informal inspections have been conducted by Tranen Revegetation Systems in May and August 2022, however this did not include detailed monitoring against completion criteria.</p>	Year after planting	Targets	Spring 2020 (overall mean)	Autumn 2021 (overall mean)	Survival (established plant density – both planting and seeding)	90% (Yr. 1) (equivalent to 1.8 plants/m <sup>2</sup> )  70% (Yr. 2) (equivalent to 1.4/m <sup>2</sup> )	See average plant density	See average plant density	Average plant density (plants/m <sup>2</sup> )	1.7 to 2 plants /m <sup>2</sup>	2.1	2.1	Plant coverage (% area of visual ground cover measured by a botanist/ revegetation consultant)	25% (Yr. 1) 50% (Yr. 2)	54%	60%	Weeds coverage (%)	10%	4%	1%
Year after planting	Targets	Spring 2020 (overall mean)	Autumn 2021 (overall mean)																		
Survival (established plant density – both planting and seeding)	90% (Yr. 1) (equivalent to 1.8 plants/m <sup>2</sup> )  70% (Yr. 2) (equivalent to 1.4/m <sup>2</sup> )	See average plant density	See average plant density																		
Average plant density (plants/m <sup>2</sup> )	1.7 to 2 plants /m <sup>2</sup>	2.1	2.1																		
Plant coverage (% area of visual ground cover measured by a botanist/ revegetation consultant)	25% (Yr. 1) 50% (Yr. 2)	54%	60%																		
Weeds coverage (%)	10%	4%	1%																		
Revegetation and weed contingency actions if required	<p>The informal inspection by Tranen in August 2022 noted that vegetation within the FMP area is in good condition, even following a five month drought from November 2021 to March 2022, noting there was significant rainfall in early August. All vegetation along the tracks to the south that had been revegetated were in good condition. Vegetation growth on the track to Karli Spring was observed to be so dense it is difficult to walk through.</p> <p>Tranen noted that <i>Pelargonium capitatum</i> and <i>Trachyandra divaricata</i> weeds from adjacent non-revegetation areas are likely to encroach into some gaps in revegetation in the future, but given the high native plant cover this will not present an issue.</p> <p>Given the completion criteria have been achieved and the formal monitoring period has been completed, it is not anticipated that any further revegetation/infill planting works will be required.</p>																				
Erosion monitoring within the foreshore area	<p>Erosion controls were put in place as part of the initial revegetation works (brushing and mulch).</p> <p>As discussed in previous ACRs, additional brushing was subsequently installed and anchored around the lookout during previous audit periods to discourage human foot traffic. Foot traffic and repeated removal of brushing material by third party individuals to make various play structures has continued in the lookout flat and blowout despite brushing measures undertaken. However, the vegetation cover has improved despite the ongoing impacts.</p>																				
Report observations of feral pests	Informal monitoring by Tranen in May and August 2022 did not observe any evidence of significant pest activity on the site.																				
Temporary fencing, pathways	Boundary fencing, boulders and signs have been installed in key areas to restrict access to the revegetation areas. Tracks not required for use have been revegetated.																				

## 2022 Annual Compliance Report – EPBC 2011/5902

Alkimos Beach



and signage of the revegetation area	Regular monitoring of the temporary fencing is carried out by the construction contractor and no issues were noted.
Report any fire incidences in the foreshore and the response.	No fire incidents have been observed to date.

#### 4.1.3 Conformance with the Precinct Landscape and Revegetation Plan

No non-conformances with the requirements of the PLRP were identified during the audit, as documented in **Appendix D**.

In accordance with the annual reporting requirements outlined in the PRLP (audit item PLRP 19), this ACR is required to include material related to the following:

- An update of any completed stages or tendered landscape for future stages.
- Report against planting targets and landscape survival targets.
- Update of completed tree planting for each stage.
- Amendments to precinct and staging plans.
- Updated plant schedules for each stage of the development.

The information required to address PLRP 18 is provided in **Table 5**, and is based on advice from Lendlease (proponent), Emerge Associates (landscape architect) and Nutrien Water (landscape contractor).

*Table 5: Precinct Landscape and Revegetation Plan CBC habitat planting performance*

Action item	Comment
Provide an update of any completed or tendered landscape for future stages.	A summary of the works undertaken to date, including plant schedules provided in <b>Appendix E</b> .
Report against planting targets.	Tracking against the rehabilitation targets is provided in <b>Appendix E</b> , including tree and shrub tracking spreadsheets.
Update of completed tree planting for each stage.	An update of completed planting with CBC POS is provided in <b>Appendix F</b> , including specific species numbers.
Amendments to precinct and staging plans.	The most up to date precinct plan is provided in <b>Appendix G</b> .
Updated plant schedules for each stage of the development.	Updated plant schedules for each stage is provided in <b>Appendix F</b> .

## 2022 Annual Compliance Report – EPBC 2011/5902

Alkimos Beach



Table 6: Compliance within conditions in EPBC 2011/5902

Condition Reference	Condition	Compliance Status	Comment	Evidence
1	Within 30 days after the commencement of Construction, the person taking the action must advise the Department in writing of the actual date of commencement.	CLD	This item is reported as completed in the 2014 ACR.	R21-001_Strategen EPBC 2011_5902 ACR 2014
2	The person taking the action must maintain accurate records substantiating all activities associated with or relevant to the conditions of approval, and make them available upon request to the Department. Such records may be subject to audit by the Department or an independent auditor in accordance with section 458 of the EPBC Act, or used to verify compliance with the conditions of approval. Summaries of audits will be posted on the Department's website. The results of audits may also be publicised through the general media.	C	Accurate records for all applicable conditions have been maintained and were available at the time of the audit and following the audit.	Refer to other items in this table and appendices.  D22-004_2022 ACR - documentation 2022.11.08 updated
3	Unless otherwise agreed to in writing by the Minister, the person taking the action must, within three months of every 12 month anniversary of the commencement of the action: a) publish a report on their website addressing compliance with each of the conditions of this approval, including implementation of any management plans as specified in the conditions; and b) provide to the Department documentary evidence of the date of publication and non-compliance with any of the conditions of approval	C	Lendlease published the 2021 Annual Compliance Report on the Alkimos Beach website on 1 December 2021, prior to the 5 December 2021 deadline.  The 2021 ACR addresses compliance with each of the conditions of the approval, including implementation of the required management plans	R22-007_EPBC20115902 ACR 2021  E22-009_Acknowledgement of 2021 ACR receipt  D22-006_Screenshot upload 2021 ACR to Lendlease Alkimos Beach Website  E22-010_ACR 2021 for AB website confirmation

## 2022 Annual Compliance Report – EPBC 2011/5902

Alkimos Beach



Table 6: Compliance within conditions in EPBC 2011/5902 (continued)

Condition Reference	Condition	Compliance Status	Comment	Evidence
4.	<p>a) The person taking the action may choose to revise the CAMP, FMP and PLRP approved by the <b>Minister</b> under conditions 10, 11 and 12 without submitting it for approval (including approval under section 143A of the EPBC Act), if the taking of the action in accordance with the revised plan would not be likely to have a new or increased impact. If the person taking the action makes this choice they must:</p> <p>i) Notify the Department in writing that the approved plan has been revised and provide the Department with:</p> <ul style="list-style-type: none"> <li>• an electronic copy of the revised plan</li> <li>• an explanation of the differences between the revised plan and the approved plan; and</li> </ul> <p>the reasons the person taking the action considers that taking the action in accordance with the revised plan would not be likely to have a new or increased impact.</p> <p>ii) Declare in writing a date on which the revised plan will first be implemented by the person taking the action. That date of initial implementation must be at least 28 days after the revised plan is submitted.</p> <p>b) The person taking the action may revoke their choice under condition 4.a) at any time by giving written notice to the Department, in which case from the following day the person taking the action must implement the approved plan.</p> <p>c) If the Minister gives a notice to the person taking the action that the Minister is satisfied that the taking of the action in accordance with the revised plan would be likely to have a new or increased impact, then:</p> <p>i. Condition 4.a) does not apply, or ceases to apply, in relation to the revised plan; and</p> <p>ii. The person taking the action must implement the approved plan.</p> <p>To avoid any doubt, this condition does not affect any operation of conditions 4.a) and 4.b) in the period before the day the notice is given. At the time of giving the notice the Minister may also notify that for a specified period of time condition 4.a) does not apply for one or more specified plans required under the approval.</p>	N/A	No revisions were made to the CAMP, FMP or PLRP during the audit period.	N/A

## 2022 Annual Compliance Report – EPBC 2011/5902

Alkimos Beach



Table 6: Compliance within conditions in EPBC 2011/5902 (continued)

Condition Reference	Condition	Compliance Status	Comment	Evidence
5	<i>Revoked.</i>			
6	If, at any time after five years from the date of this approval, the person taking the action has not substantially commenced the action, then the person taking the action must not substantially commence the action without the written agreement of the <b>Minister</b> .	CLD	This item is reported as completed in the 2013 ACR.	R21-002_Lendlease EPBC20115902 ACR 2013
7	Unless otherwise agreed to in writing by the <b>Minister</b> , the person taking the action must publish all management plans referred to in their conditions of approval on their website. Each management plan must be published on the website within 1 month of being approved and must remain on the website for the life of the project.	C	No management plans were revised (and therefore required to be published) within the audit period.  The current CAMP (v4) and FMP (v5) were published to the Alkimos Beach website on 25 August 2020, whilst the current PLRP (v6) was published on 30 April 2020, during the previous audit report  All management plans are available at: <a href="https://communities.lendlease.com/western-australia/alkimos-beach/living-in-alkimos-beach/sustainability/">https://communities.lendlease.com/western-australia/alkimos-beach/living-in-alkimos-beach/sustainability/</a>	D22-007_Screenshot upload management plans to Lendlease website 2022
8	The person taking the action must not clear more than 21.1 ha of Carnaby's Black Cockatoo foraging habitat from Lot 1004, 80L Romero Road and 2611 Marmion Avenue, Alkimos, Western Australia.	C	During the 2022 audit period 0.12 ha of CBC foraging habitat within Lot 1004, 80L Romero Road and 2611 Marmion Avenue, Alkimos was cleared.  20.99 ha of CBC habitat has been cleared in total to date. This is less than the allowable 21.1ha of CBC approved clearing. See <b>Appendix A</b> .  It is noted that the 2021 CBC clearing plan had a discrepancy whereby the area of clearing of incorrectly overstated due to a	D22-002 Carnaby's Black Cockatoo - Figure  E22-011_Response to query regarding mapping of CBC inconsistency



## 2022 Annual Compliance Report – EPBC 2011/5902

Alkimos Beach



			drafting error. This has been resolved in the 2022 clearing plan.	
9	<i>Revoked.</i>			
10.1	To protect habitat for listed threatened species, the person taking the action must prepare and submit a Conservation Area Management Plan (CAMP) detailing management of POS (designated Conservation POS at Attachment A), for the approval by the <b>Minister</b> . The CAMP must include: <ul style="list-style-type: none"> <li>a) at least 2 ha of Carnaby's Black-Cockatoo foraging habitat to be retained and rehabilitated in POS on the project area, as shown in Attachment A, to be managed for habitat recovery, protection and conservation;</li> <li>b) details of supplementary planting equivalent to at least 1 ha of Carnaby's Black-Cockatoo foraging habitat on the project area (to be spread across conservation POS and ROS), including timeframes and survival targets proposed for plantings;</li> <li>c) measures to manage weeds and feral pests;</li> <li>d) bushfire prevention and management measures;</li> <li>e) erosion control measures;</li> <li>f) access management (including boardwalks, pathways, signage and fencing);</li> <li>g) performance indicators and corrective measures;</li> <li>h) monitoring and reporting measures;</li> <li>i) roles and responsibilities of contractors, staff and the person taking the action; and</li> <li>j) time frames for the implementation and management of the above measures.</li> </ul>	CLD	This condition was noted to be compliant in the 2018 ACR and is therefore considered complete.  The current version (Revision 4) of the CAMP was provided to DAWE on 14 October 2019 and first implemented on 14 November 2019.	R21-004_Strategen EPBC20115902 ACR 2018  R21-005_RPS_Conservation Area Management Plan
10.2	The CAMP must be submitted to the Department within 12 months of the date of approval.	CLD	This item is reported as completed in the 2013 ACR.	R21-002_Lendlease_EPBC20115902 ACR 2013
10.3	If the <b>Minister</b> approves the CAMP, the approved plans must be implemented.	C	It is recognised that, as reported in the 2018 ACR, the CAMP's three-year rehabilitation monitoring period has been completed, and therefore the rehabilitation elements of the CAMP have ceased to be implemented. As such, only the ongoing obligations of the CAMP (for the western area only) were assessed during this audit period and it was found that of the four ongoing obligations identified all were conformant. Refer to <b>Appendix B</b> for further detail.	

## 2022 Annual Compliance Report – EPBC 2011/5902

Alkimos Beach



Table 6: Compliance within conditions in EPBC 2011/5902

Condition Reference	Condition	Compliance Status	Comment	Evidence
10.4	No construction can commence in the area shown as the No Clearing area on Attachment C until the CAMP is approved by the <b>Minister</b> .	CLD	This item is reported as compliant in the 2014 ACR, and is considered completed.	R21-006_Strategen_EPBC20115902 ACR 2014
11	To protect habitat for listed threatened species, the person taking the action must prepare and submit a Foreshore Management Plan (FMP) detailing management of ROS on the project area (designated Regional Parks and Recreation at Attachment A), for approval by the <b>Minister</b> . The FMP must include: <ul style="list-style-type: none"> <li>a) details of supplementary planting equivalent to at least 1 ha of Carnaby's Black-Cockatoo foraging habitat on the project area (to be spread across conservation POS and ROS), including timeframes and survival targets proposed for plantings;</li> <li>b) details of funding to be provided for long-term conservation management of ROS and details of the entity who will be responsible for management of ROS;</li> <li>c) measures to manage weeds and feral pests;</li> <li>d) bushfire prevention and management measures;</li> <li>e) erosion control measures;</li> <li>f) access management (including visitor facilities, boardwalks, pathways, signage and fencing);</li> <li>g) performance indicators and corrective measures;</li> <li>h) monitoring and reporting measures;</li> <li>i) roles and responsibilities of contractors, staff and the person taking the action; and</li> <li>j) time frames for the implementation and management of the above measures.</li> </ul>	CLD	The current FMP (revision 5) was reviewed by DAWE and accepted under Condition 4a.	E21-003_DAWA_Confirmation revised MPs Cond4a  R21-018_RPS_Foreshore Management Plan
11.2	The FMP must be submitted to the Department within 12 months of the date of approval.	CLD	This item is reported as completed in the 2013 ACR. The current version of the FMP has been submitted to the Department and approved in accordance with condition 4a.	R21-007_Lendlease EPBC20115902 ACR 2013  E21-003_DAWA_Confirmation revised MPs Cond4a

## 2022 Annual Compliance Report – EPBC 2011/5902

Alkimos Beach



Table 6: Compliance within conditions in EPBC 2011/5902

Condition Reference	Condition	Compliance Status	Comment	Evidence
11.3	If the <b>Minister</b> approves the FMP, the approved plans must be implemented.	C	<p>The key actions of the FMP were assessed during this audit period and it was found that of the 70 key actions identified within the FMP:</p> <ul style="list-style-type: none"> <li>• 1 is conformant</li> <li>• 66 are completed</li> <li>• 3 are N/A.</li> </ul> <p>Monitoring of the FMP completion criteria commenced in Spring 2015 with final completion due on 9 September 2020. The final Tranen monitoring report is the Autumn Revegetation Monitoring Report (March 2021). However, Tranen has been engaged to continue with weed control and informal inspections until the site is formally handed over to local government, which continued to be implemented during the audit period (R22-002_Alkimos Beach Monitoring - Lendlease Communities (Alkimos) Post Activity Report on Inspection FMP and CAMP Site Condition).</p> <p>Refer to <b>Appendix C</b> for further detail.</p>	
11.4	No construction can commence in the area shown as the No Clearing area on Attachment C until the FMP is approved by the <b>Minister</b> .	CLD	This item is reported as compliant in the 2014 ACR and is considered completed.	R21-001_Strategen EPBC 2011_5902 ACR 2014
12	<p>To protect habitat for listed threatened species the person taking the action must prepare and submit a Precinct Landscape and Revegetation Plan (PLRP) for the project area, for approval by the <b>Minister</b>. The PLRP must include:</p> <ol style="list-style-type: none"> <li>a) measures to establish the equivalent of at least 5 ha of Carnaby's Black-Cockatoo habitat on the project area, through streetscape and landscape planting;</li> <li>b) at least 50% of plantings of trees and shrubs in streetscape and landscape planting must consist of plant species known to be primary feeding plants for Carnaby's Black-Cockatoo;</li> <li>c) timeframes and survival targets proposed for plantings;</li> <li>d) contingency measures if survival targets are not achieved;</li> <li>e) monitoring and reporting measures;</li> <li>f) roles and responsibilities of contractors, staff and the person taking the action; and</li> </ol>	CLD	The current PLRP (version 6) was reviewed by DAWE and approved under Condition 4a.	<p>E21-003_DAWE_Confirmation revised MPs Cond4a</p> <p>E21-004_DAWE_Revised PLRP received by DAWE</p>

## 2022 Annual Compliance Report – EPBC 2011/5902

Alkimos Beach



g) timeframes for the implementation and management of the above measures.

Table 6: Compliance within conditions in EPBC 2011/5902

Condition Reference	Condition	Compliance Status	Comment	Evidence
12.2	The PLRP must be submitted to the Department within 12 months of the date of approval.	CLD	This item is reported as completed in the 2013 ACR.	R21-007_Lendlease EPBC20115902 ACR 2013
12.3	If the <b>Minister</b> approves the PLRP, the approved plans must be implemented.	C	The key actions of the PLRP were assessed during this audit period and found that of the 18 actions identified within the PLRP: <ul style="list-style-type: none"> <li>• 7 are conformant</li> <li>• 1 is completed</li> <li>• 10 are N/A.</li> </ul> Refer to <b>Appendix D</b> for further detail.	
12.4	No construction can commence in the area shown as the No Clearing area on Attachment C until the PLRP is approved by the <b>Minister</b> .	CLD	This item is reported as compliant in the 2014 ACR and is considered completed.	R21-001_Strategen EPBC 2011_5902 ACR 2014
12A	The person taking the action may, with written agreement of the <b>Minister</b> , cease to implement the CAMP, FMP and/or PRLP. If the person taking the action wishes to cease implementing the CAMP, FMP and/or PRLP, the person taking the action must submit a request to the <b>Minister</b> which: <ol style="list-style-type: none"> <li>includes a report demonstrating that the outcomes and performance indicators of the approved CAMP, FMP and/or PRLP have been achieved;</li> <li>specifies the entity that will implement the CAMP, FMP and/or PRLP in the future;</li> <li>includes written agreement from the entity to implanting the approved CAMP, FMP and/or PRLP and</li> </ol>	N/A	No application was made to cease implementing, maintaining records and reporting on implementing the CAMP, FMP and/or PRLP during the audit period.	N/A

## 2022 Annual Compliance Report – EPBC 2011/5902

Alkimos Beach



d) sets out the entity's capacity to implement the CAMP, FMP and/or PRLP.

If the **Minister** agrees to the request, the person taking the action may cease to implement the CAMP, FMP and/or PRLP, to maintain associated records (Condition 2) and/or report on implementation of the CAMP, FMP and/or PRLP (Condition 3).

## 2022 Annual Compliance Report – EPBC 2011/5902

Alkimos Beach



Table 6: Compliance within conditions in EPBC 2011/5902

Condition Reference	Condition	Compliance Status	Comment	Evidence
13.1	To offset the loss of habitat for Carnaby's Black-Cockatoo, the person taking the action must, within 12 months of the commencement of construction, provide funds to WA DEC for the acquisition, and a contribution to management of the offset described in Alkimos Lot 1004 Residential Development Mitigation and Offsets Strategy for Matters of National Environmental Significance (Eco Logical Australia, January 2012). The offset land must be at least 126 ha of freehold land in the Gingin area and contain vegetation that has equivalent or better foraging habitat for Carnaby's Black-Cockatoo, including Banksia woodland/shrubland. Within 4 weeks of the funding being provided to the WA DEC, the person taking the action must provide written evidence to the Department of the payment.	CLD	This item is reported as completed in the 2013 ACR.	R21-007_Lendlease EPBC20115902 ACR 2013
14	Within 12 months of the commencement of construction, the person taking the action must provide the Department with a description and map clearly defining the location and boundaries of the offset property described at Condition 13, which must be accompanied with the offset attributes and a shapefile.	CLD	This item is reported as completed in the 2013 ACR.	R21-007_Lendlease EPBC20115902 ACR 2013



## 2022 Annual Compliance Report – EPBC 2011/5902 Alkimos Beach



### 5 References

Department of Environment and Energy (DoEE) 2014, *Annual Compliance Report Guidelines*, Canberra.

Graham A Brown & Associates 2014, *Environmental Audit Guidebook*, Thomson Reuters.

Lendlease 2020, *Precinct Landscape and Revegetation Plan (Commonwealth)*, Rev 6.

Office of the Environmental Protection Authority (OEPA) 2012a, *Post Assessment Guideline for Preparing a Compliance Assessment Report*.

Office of the Environmental Protection Authority (OEPA) 2012b, *Post Assessment Guidelines for Preparing an Audit Table*.

Office of the Environmental Protection Authority (OEPA) Undated, *Post Assessment Form 2 for a Statement of Compliance*, Perth, WA.

RPS 2019a, *Alkimos Beach Commonwealth Foreshore Management Plan*, EEL12347.001, Revision 5.

RPS 2019b, *Conservation Area Management Plan (Commonwealth) Alkimos Beach*, EEL12347.001-2, Revision 4.

# Appendix A








CBC Clearing Area (Roberts Day 2022)

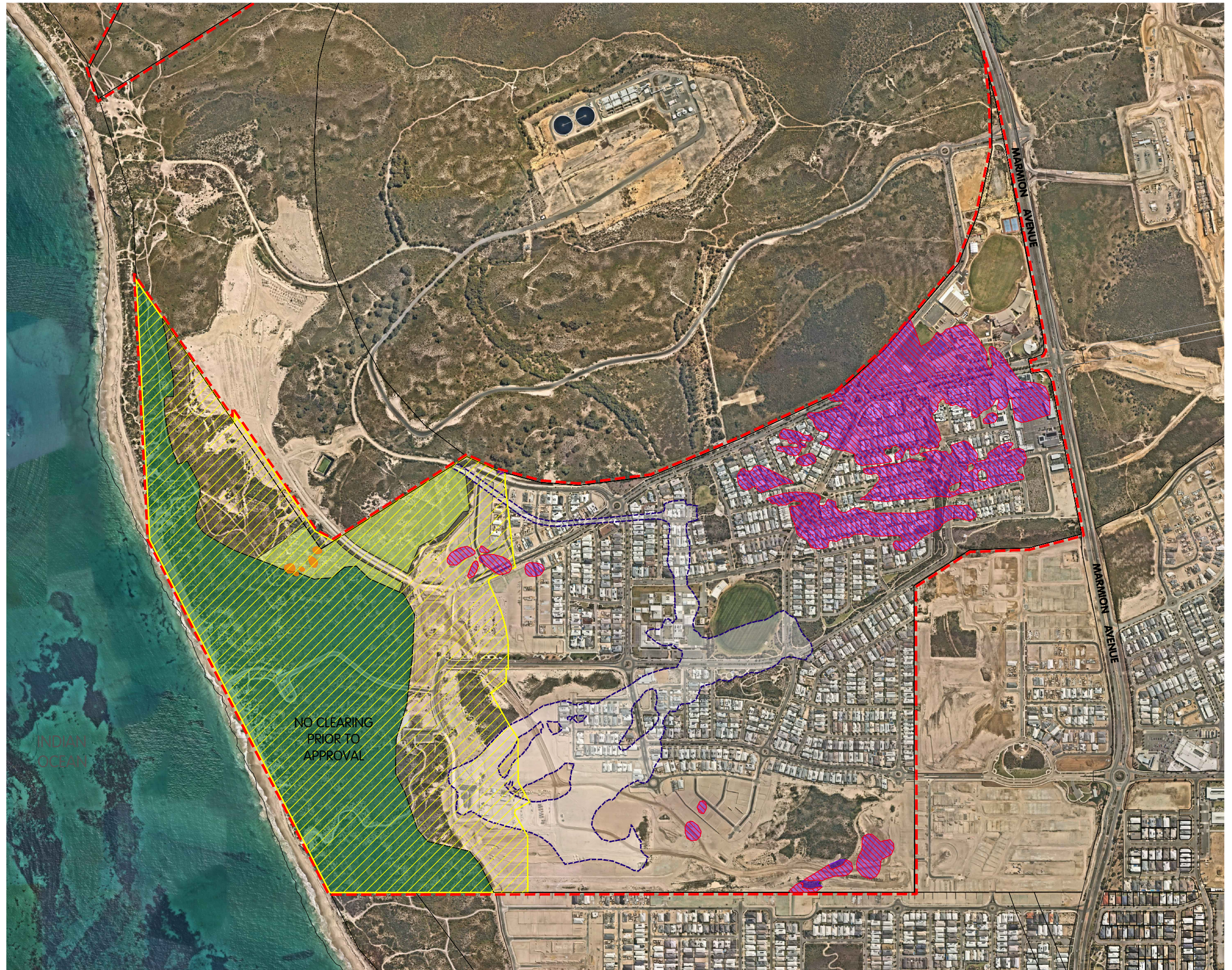






**LEGEND**

-  SUBJECT LAND
  
- CARNABYS BLACK COCKATOO
-  RETENTION (0.14ha)
-  LOSS (21.14ha)
- TOTAL AREA - 21.28ha
  
-  CONSERVATION POS
-  REGIONAL OPEN SPACE
  
-  AREA PREVIOUSLY  
CLEARED DURING  
WWTP WORKS
  
-  CLEARED AREA OF  
CBC HABITAT - 20.99ha



**AERIAL PHOTOGRAPHY**  
SOURCE: NEARMAP  
YYMMDD: 221001

**CADASTRAL INFORMATION**  
SOURCE: LANDGATE  
YYMMDD: 101101  
DWG REF: 0845cad  
PROJECTION: PCG94

**HATCH | RobertsDay**

SIZE A3 1:10000  
0 metres 100 200 300 400 500

REV	DESCRIPTION	YYMMDD	DRAWN	APPR'D
L	UPDATE ORTHO	211025	SB	RDα
K	UPDATE ORTHO	210817	SB	RD
J	UPDATE ORTHO	200901	SB	RD
I	UPDATE ORTHO & AREA CLEARED	190805	SB	RD

**CARNABY'S BLACK COCKATOO - FIGURE**  
**Alkimos Beach - South Alkimos**  
City of Wanneroo

REF NO. **DLL ALK** DRAW NO. **RD1 051** REV. **L**



# Appendix B

Conformance with Conservation Area Management Plan



## 2022 Annual Compliance Report – EPBC 2011/5902

Alkimos Beach



Table B1: Conformance with Conservation Area Management Plan

Monitoring Requirements	Conformance Status	Comment	Evidence
Measures to manage weed and feral pests	C	<p>Tranen undertook informal monitoring twice within the reporting period, in May 2022 and August 2022.</p> <p>No concerns or recommendations were made in regards to the management of feral pests or weeds within revegetated areas. Weed levels were observed to be low.</p>	<p>R22-001_Alkimos Beach Monitoring – Lendlease Communities (Alkimos) Post Activity Report on Informal Inspection FMP and CAMP Site Condition May 2022</p> <p>R22-002_Alkimos Beach Monitoring – Lendlease Communities (Alkimos) Post Activity Report on Inspection FMP and CAMP Site Condition</p>
Bushfire prevention and management measures	C	<p>Tranen undertook informal monitoring twice within the reporting period, in May 2022 and August 2022.</p> <p>No evidence of bushfires occurring in the CAMP area was observed in the reporting period.</p>	<p>R22-001_Alkimos Beach Monitoring - Lendlease Communities (Alkimos) Post Activity Report on Informal Inspection FMP and CAMP Site Condition May 2022</p> <p>R22-002_Alkimos Beach Monitoring - Lendlease Communities (Alkimos) Post Activity Report on Inspection FMP and CAMP Site Condition</p>
Erosion control measures	C	<p>Tranen undertook informal monitoring twice within the reporting period, in May 2022 and August 2022.</p> <p>No significant erosion issues were noted within the CAMP area.</p>	<p>R22-001_Alkimos Beach Monitoring - Lendlease Communities (Alkimos) Post Activity Report on Informal Inspection FMP and CAMP Site Condition May 2022</p> <p>R22-002_Alkimos Beach Monitoring - Lendlease Communities (Alkimos) Post Activity Report on Inspection FMP and CAMP Site Condition</p>
Access management (including pathways, signage and fencing)	C	<p>Tranen undertook informal monitoring twice within the reporting period, in May 2022 and August 2022. No issues relating to pathways, signage or fencing were noted. During the August 2022 site inspection completed as part of this audit, a single panel of fencing adjacent to the western CAMP area was observed to have been cut. A photograph of the cut fencing is shown in <b>Plate 1</b> and it's location is shown in <b>Plate 2</b>. Lendlease are arranging for this section of fencing to be repaired/replaced.</p> <p>The civil contractor also undertakes regular monitoring of the temporary and permanent fencing throughout the estate, including sections of foreshore and conservation areas. An inspection in September 2022 did not identify any damage of inspected areas.</p>	<p>R22-001_Alkimos Beach Monitoring - Lendlease Communities (Alkimos) Post Activity Report on Informal Inspection FMP and CAMP Site Condition May 2022</p> <p>R22-002_Alkimos Beach Monitoring - Lendlease Communities (Alkimos) Post Activity Report on Inspection FMP and CAMP Site Condition</p> <p>R22-003 Fence Inspection-Beach Conservation Area</p>

# 2022 Annual Compliance Report – EPBC 2011/5902

Alkimos Beach



Plate 1: Photograph of cut fence at western CAMP area

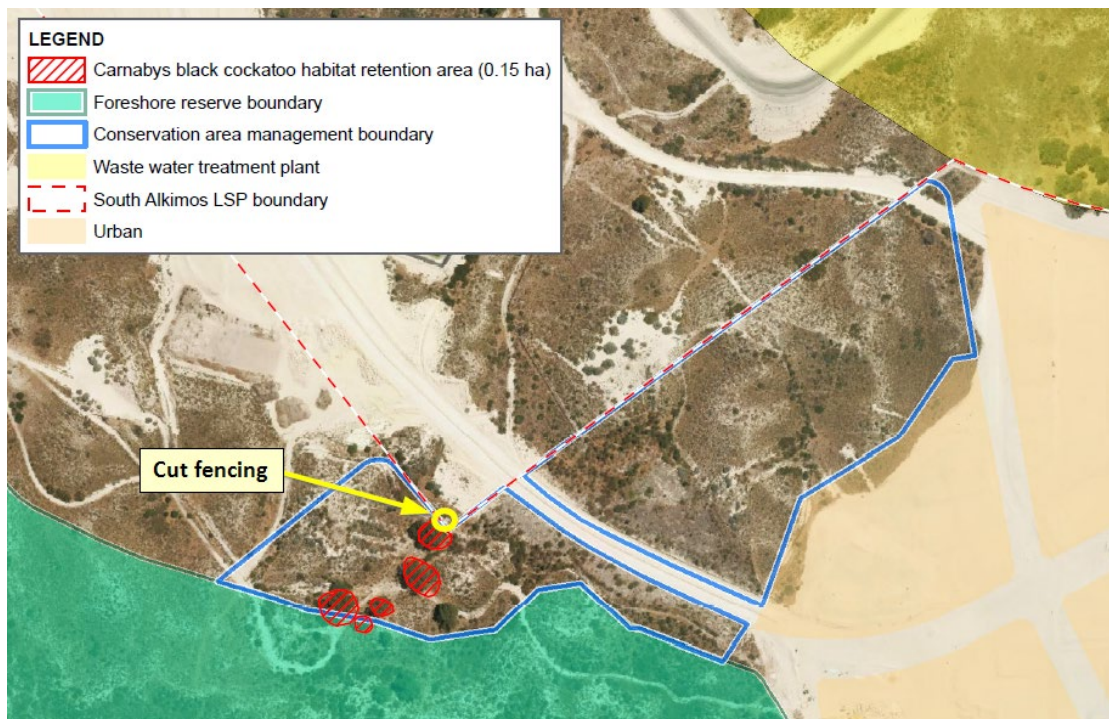


Plate 2: Location of cut fence at western CAMP area



# Appendix C

Conformance with Foreshore Management Plan





## 2022 Annual Compliance Report – EPBC 2011/5902

Alkimos Beach



Table C1 Conformance with Foreshore Management Plan

Reference code	Activity	Action	Timing	Conformance	Comment	Evidence
<b>Carnaby's Black Cockatoo Habitat – Revegetation Species</b>						
FMP 1	5.3.1 Carnaby's Black-Cockatoo habitat – revegetation species	The rehabilitation program will both complement the existing tuart trees ( <i>Eucalyptus gomphocephala</i> ) with an additional 1 ha and a portion (at least 0.93 ha) of the 1 ha supplementary planting of Carnaby's Black-Cockatoo foraging habitat.	N/A	CLD	<p>Revegetation occurred along the access tracks shown in Figure D of the FMP. Tranen has continued to report on the work within the revegetated area including monitoring and infill planting works in accordance with their revegetation plan included as Appendix B of the FMP.</p> <p>Rehabilitation planting was concluded in previous years with no infill planting occurring within the current audit period. Therefore, this item is considered completed.</p>	<p>R22-001_Alkimos Beach Monitoring - Lendlease Communities (Alkimos) Post Activity Report on Informal Inspection FMP and CAMP Site Condition May 2022</p> <p>R22-002_Alkimos Beach Monitoring - Lendlease Communities (Alkimos) Post Activity Report on Inspection FMP and CAMP Site Condition</p> <p>R21-018_RPS_Foreshore Management Plan</p>
FMP 2		<p>A range of overstorey and understorey species will be planted in order to provide diversity to the vegetation structure and habitat. The species to be used in the rehabilitation program will include:</p> <ul style="list-style-type: none"> <li>• <i>Acacia saligna</i></li> <li>• <i>Allocasuarina lehmanniana</i></li> <li>• <i>Eucalyptus gomphocephala</i></li> </ul>	N/A	CLD	<p>The list of species used in revegetation is reported in Tranen's monitoring reports and consist of a range of species including <i>Acacia saligna</i>, <i>Allocasuarina lehmanniana</i> and <i>Eucalyptus gomphocephala</i>.</p> <p>The formal audit period for the FMP has now ceased, therefore this item is considered completed.</p>	<p>R22-001_Alkimos Beach Monitoring - Lendlease Communities (Alkimos) Post Activity Report on Informal Inspection FMP and CAMP Site Condition May 2022</p> <p>R22-002_Alkimos Beach Monitoring - Lendlease Communities (Alkimos) Post Activity Report on Inspection FMP and CAMP Site Condition</p>

## 2022 Annual Compliance Report – EPBC 2011/5902

Alkimos Beach



Reference code	Activity	Action	Timing	Conformance	Comment	Evidence
						R21-018_RPS_Foreshore Management Plan
<b>Plant Propagation</b>						
FMP 3	5.4.1 Plant Propagation	Where possible seedlings will be propagated from the seed bank. Where seed is not available of desired species, seed and seedlings will be sourced from the nearest available provenance.	N/A	N/A	No seedlings were planted or propagated during the audit period.	R22-001_Alkimos Beach Monitoring - Lendlease Communities (Alkimos) Post Activity Report on Informal Inspection FMP and CAMP Site Condition May 2022  R22-002_Alkimos Beach Monitoring - Lendlease Communities (Alkimos) Post Activity Report on Inspection FMP and CAMP Site Condition
<b>Seedling Propagation</b>						
FMP 4	5.4.1.1 Seedling Propagation	Seedlings will be grown by nurseries that are accredited by the Nursery Industry Accreditation Scheme of Australia (NIASA)	N/A	N/A	No seedlings were planted or propagated during the audit period.	R22-001_Alkimos Beach Monitoring - Lendlease Communities (Alkimos) Post Activity Report on Informal Inspection FMP and CAMP Site Condition May 2022  R22-002_Alkimos Beach Monitoring - Lendlease Communities (Alkimos) Post Activity Report on Inspection FMP and CAMP Site Condition

## 2022 Annual Compliance Report – EPBC 2011/5902

Alkimos Beach



Reference code	Activity	Action	Timing	Conformance	Comment	Evidence
<b>Site Protection</b>						
FMP 5	5.4.2 Prior to Revegetation	Old vehicle access tracks are to be blocked at both ends by pushing up soil and placing large objects such as limestone boulders or large logs in front of the mounds.	N/A	CLD	Initial work in 2015 included closing of 4WD tracks using boulders and fencing within the foreshore area. The 2018 ACR confirmed vegetation and boulders have been placed in the required areas to reduce scouring from vehicles and restrict vehicle activity, therefore this item is considered completed. Tranen reported that the old vehicle tracks had revegetated with excellent species density.	R21-004_Strategen_EPBC20115902 ACR 2018  R22-002_Alkimos Beach Monitoring - Lendlease Communities (Alkimos) Post Activity Report on Inspection FMP and CAMP Site Condition
FMP 6		A combination of rabbit exclusion fencing, tree guards, and targeted rabbit control will be employed.	N/A	CLD	No evidence of any significant pest activity was noted during Tranen's informal monitoring on the site, during the audit period. The formal audit period for the FMP has now ceased, therefore this item is considered completed. Informal monitoring will continue until handover to the City.	R22-002_Alkimos Beach Monitoring - Lendlease Communities (Alkimos) Post Activity Report on Inspection FMP and CAMP Site Condition
FMP 7		Semi-permanent fencing will be installed adjacent to roads and urban subdivision areas during construction.	NA	CLD	The 2018 ACR reported that the FMP area is fenced and therefore this is considered completed.	R21-004_Strategen_EPBC20115902 ACR 2018
FMP 8		All construction activities will be restricted to the subdivision areas and will avoid the rehabilitation area.	N/A	CLD	A site visit conducted by Emerge has confirmed construction activities have been restricted to the subdivision area.	R22-002_Alkimos Beach Monitoring - Lendlease Communities (Alkimos)

## 2022 Annual Compliance Report – EPBC 2011/5902

Alkimos Beach



Reference code	Activity	Action	Timing	Conformance	Comment	Evidence
					<p>Informal monitoring conducted by Tranen did not identify any incursion of subdivision works into the rehabilitation area.</p> <p>The formal audit period for the FMP has now ceased, therefore this item is considered completed.</p>	Post Activity Report on Inspection FMP and CAMP Site Condition
<b>Revegetation Site Preparation</b>						
FMP 9	5.4.3 Revegetation Site Preparation	<p>To maximise the potential for revegetation success, the area(s) that are subject to revegetation will be prepared in the following manner:</p> <ul style="list-style-type: none"> <li>weed spraying commenced, rubbish and debris will be removed and disposed of appropriately.</li> </ul>	N/A	CLD	The formal audit period for the FMP has now ceased, therefore this item is considered completed.	R22-002_Alkimos Beach Monitoring - Lendlease Communities (Alkimos) Post Activity Report on Inspection FMP and CAMP Site Condition
FMP 10		<ul style="list-style-type: none"> <li>brushing and/or mulching may be used to assist stabilising soil in erosion prone locations as required.</li> </ul>	N/A	CLD	<p>The formal audit period for the FMP has now ceased, therefore this item is considered completed. Informal monitoring will continue until handover to the City.</p> <p>Informal monitoring conducted by Tranen and Emerge Associates indicated that some erosion continues at the lookout area. The area continues to be mitigated with brushing techniques.</p>	R22-002_Alkimos Beach Monitoring - Lendlease Communities (Alkimos) Post Activity Report on Inspection FMP and CAMP Site Condition

## 2022 Annual Compliance Report – EPBC 2011/5902

Alkimos Beach



Reference code	Activity	Action	Timing	Conformance	Comment	Evidence
<b>Revegetation Method</b>						
FMP 11	5.4.3 Revegetation Method	Revegetation species will be subdivided into four categories: <ol style="list-style-type: none"> <li>1. Beach grasses and herbaceous species adopted for the most exposed locations.</li> <li>2. Semi-stable dune colonisers adapted to partially protected areas.</li> <li>3. Plants of protected dunal situations.</li> <li>4. Plants of protected well stabilised and vegetated areas.</li> </ol>	NA	CLD	The formal audit period for the FMP has now ceased, therefore this item is considered completed.  Tranen continues to informally monitor revegetation sites.	R22-002_Alkimos Beach Monitoring - Lendlease Communities (Alkimos) Post Activity Report on Inspection FMP and CAMP Site Condition
<b>Schedule</b>						
FMP 12	Scheduling	Tube stock used in the revegetation program will be sourced from local accredited nurseries.	NA	CLD	Refer to FMP 3 and FMP 4.	
FMP 13		Planting will be carried out in winter; around June-July when the soil moisture content is high enough for optimum seedling growth without irrigation and after the existing weeds have germinated and have been sprayed.	In winter; around June-July	CLD	No planting occurred during the audit period.  The formal audit period for the FMP has now ceased, therefore this item is considered completed. Informal monitoring will continue until handover to the City.	R22-002_Alkimos Beach Monitoring - Lendlease Communities (Alkimos) Post Activity Report on Inspection FMP and CAMP Site Condition
FMP 14		Each tube stock will be planted with a plastic guard, if required, to prevent rabbits feeding on plant stock and to protect from strong winds	NA	CLD	Refer to FMP 6	

## 2022 Annual Compliance Report – EPBC 2011/5902

Alkimos Beach



Reference code	Activity	Action	Timing	Conformance	Comment	Evidence
FMP 15		Tube stock will mostly be planted at an average density of two plants per m <sup>2</sup> dependant on the specific plant species used. The planting density can range from 1.7 m <sup>2</sup> to 2 m <sup>2</sup> [as a minimum, species dependent].	NA	CLD	No planting occurred during the audit period.  The formal audit period for the FMP has now ceased, therefore this item is considered completed. Informal monitoring will continue until handover to the City.	R22-002_Alkimos Beach Monitoring - Lendlease Communities (Alkimos) Post Activity Report on Inspection FMP and CAMP Site Condition
FMP 16		Rabbit guards will be used (if required) for tube stocks in the revegetation areas.	N/A	CLD	Refer to FMP 6.	
FMP 17	Watering	Some tube stock will be planted with tablets/water crystals during planting to help improve survival rates. The coastal plant species to be used in the rehabilitation of areas within the ROS will be drought tolerant and therefore it is not anticipated these natives will require irrigation or extensive hand watering.	N/A	CLD	No planting occurred during the audit period.  The formal audit period for the FMP has now ceased, therefore this item is considered completed.	R22-002_Alkimos Beach Monitoring - Lendlease Communities (Alkimos) Post Activity Report on Inspection FMP and CAMP Site Condition
FMP 18	Seedling Planting	Seedlings will be directly planted using planting tubes. Seedlings will be watered before delivery to site on the day of planting.	N/A	CLD	No planting occurred during the audit period.	R22-002_Alkimos Beach Monitoring - Lendlease Communities (Alkimos) Post Activity Report on Inspection FMP and CAMP Site Condition
FMP 19	Seed treatment and Direct Seeding	All seed to be utilised will be pre-treated prior to seeding to break dormancy factors. This will include aerosol smoke treatment, mechanical scarification, or hot water treatment as appropriate to individual species. Seed will then be combined with a bulking agent to facilitate even distribution across the site. Hand broadcasting will be the application technique as this will permit even dispersal of all seed sizes.	N/A	CLD	The formal audit period for the FMP has now ceased, therefore this item is considered completed. Informal monitoring will continue until handover to the City.  Tranen has indicated that no further seeding has occurred in the reporting period.	R22-002_Alkimos Beach Monitoring - Lendlease Communities (Alkimos) Post Activity Report on Inspection FMP and CAMP Site Condition



## 2022 Annual Compliance Report – EPBC 2011/5902

Alkimos Beach



Reference code	Activity	Action	Timing	Conformance	Comment	Evidence
FMP 20	Signage	To assist in preventing unauthorised access and trampling of revegetation efforts, signage where appropriate will be installed.	N/A	CLD	Signage was previously installed as detailed in the 2015 ACR and has been monitored since with one replacement in 2019.  The formal audit period for the FMP has now ceased, therefore this item is considered completed.	D22-005_Photo summary site visit Alkimos ACR 28 August 2022
FMP 21	Rehabilitation Strategy	The 'Completely Degraded' areas will be planted at an average density of 1.8 plants / m <sup>2</sup> (the density planting can range from 1.7 m <sup>2</sup> to 2 m <sup>2</sup> ) dependent on the Carnaby's Black-Cockatoo foraging habitat species plant.	N/A	CLD	Refer to FMP 15	
FMP 22	Weed Management	If weeds are considered an issue within the rehabilitation area, a weed spraying program to control weed species, prior to installation of seeds and seedlings will be implemented.	Spring prior to initial rehabilitation and spring and autumn post planting	CLD	The formal audit period for the FMP has now ceased, therefore this item is considered completed. Informal monitoring will continue until handover to the City.  Tranen has indicated in two informal monitoring reports within the audit period that weed levels are low within the revegetated areas.	R22-001_Alkimos Beach Monitoring - Lendlease Communities (Alkimos) Post Activity Report on Informal Inspection FMP and CAMP Site Condition May 2022  R22-002_Alkimos Beach Monitoring - Lendlease Communities (Alkimos) Post Activity Report on Inspection FMP and CAMP Site Condition

## 2022 Annual Compliance Report – EPBC 2011/5902

Alkimos Beach



Reference code	Activity	Action	Timing	Conformance	Comment	Evidence
FMP 23		Selective herbicides (i.e. grass or broadleaf-specific) will be favoured over general knockdown herbicides.	NA	CLD	Tranen has indicated that no further weed control has taken place in the reporting period.  The formal audit period for the FMP has now ceased, therefore this item is considered completed.	R22-001_Alkimos Beach Monitoring - Lendlease Communities (Alkimos) Post Activity Report on Informal Inspection FMP and CAMP Site Condition May 2022  R22-002_Alkimos Beach Monitoring - Lendlease Communities (Alkimos) Post Activity Report on Inspection FMP and CAMP Site Condition
FMP 24		To ensure that off-target damage is minimised, herbicide spraying operators will only be engaged if they: <ul style="list-style-type: none"> <li>• are appropriately qualified and licensed in herbicide application</li> <li>• have demonstrated experience in the ability to identify, and distinguish between, native and weed species</li> <li>• are familiar with the most appropriate control measures, timing, herbicides, and application rates for the target species</li> </ul>	NA	CLD	Tranen has indicated that no further weed control has taken place in the reporting period.  The formal audit period for the FMP has now ceased, therefore this item is considered completed.	

## 2022 Annual Compliance Report – EPBC 2011/5902

Alkimos Beach



FMP 25		Weed spraying will be undertaken to manage the abundance and spread of weed species into and within the revegetation area if required.	Contingency	CLD	Tranen has indicated that no further weed control has taken place in the reporting period.  The formal audit period for the FMP has now ceased, therefore this item is considered completed.	R22-001_Alkimos Beach Monitoring - Lendlease Communities (Alkimos) Post Activity Report on Informal Inspection FMP and CAMP Site Condition May 2022  R22-002_Alkimos Beach Monitoring - Lendlease Communities (Alkimos) Post Activity Report on Inspection FMP and CAMP Site Condition
<b>Post-rehabilitation Management</b>						
FMP 26	5.6 Post-rehabilitation Management	To ensure longer-term success of the 1 ha rehabilitation and supplementary planting areas, the rehabilitation areas will be monitored and maintained for five years following initial seedling installation.	5 years post revegetation	CLD	The formal audit period for the FMP has now ceased, therefore this item is considered completed. Tranen has been engaged to continue informal inspections until the site is formally handed over to local government.  Tranen has completed two informal monitoring sessions in the reporting period and have indicated that no further weed control was undertaken during the reporting period.	R22-001_Alkimos Beach Monitoring - Lendlease Communities (Alkimos) Post Activity Report on Informal Inspection FMP and CAMP Site Condition May 2022  R22-002_Alkimos Beach Monitoring - Lendlease Communities (Alkimos) Post Activity Report on Inspection FMP and CAMP Site Condition
FMP 27	5.6.1 Completion Criteria	If completion criteria are not met, further infill planting will be required.	NA	CLD	Completion criteria have been met.  The formal audit period for the FMP has now ceased, therefore	R22-001_Alkimos Beach Monitoring - Lendlease Communities (Alkimos) Post Activity Report on Informal Inspection FMP

2022 Annual Compliance Report – EPBC 2011/5902  
Alkimos Beach



						<p>this item is considered completed. Informal monitoring will continue until handover to the City.</p>	<p>and CAMP Site Condition May 2022</p> <p>R22-002_Alkimos Beach Monitoring - Lendlease Communities (Alkimos) Post Activity Report on Inspection FMP and CAMP Site Condition</p>																			
		<table border="1"> <thead> <tr> <th>Year after Planting</th> <th>Year 1</th> <th>Year 2</th> <th>Autumn 2021</th> </tr> </thead> <tbody> <tr> <td>Survival (established plant density both planting and seeding)</td> <td>90% (equivalent to 1.8 plants /m2)</td> <td>70% (equivalent to 1.4 plants /m2)</td> <td>See below</td> </tr> <tr> <td>Average plant density (plants/m2)</td> <td>1.8 to 2.7</td> <td>1.8 to 2.7</td> <td>2.1</td> </tr> <tr> <td>Plant coverage (% area of visual ground cover measured by a botanist/revegetation consultant)</td> <td>25%</td> <td>50%</td> <td>60 %</td> </tr> <tr> <td>Weeds coverage</td> <td>No greater than 10% cover</td> <td>No greater than 10% cover</td> <td>1%</td> </tr> </tbody> </table>	Year after Planting	Year 1	Year 2	Autumn 2021	Survival (established plant density both planting and seeding)	90% (equivalent to 1.8 plants /m2)	70% (equivalent to 1.4 plants /m2)	See below	Average plant density (plants/m2)	1.8 to 2.7	1.8 to 2.7	2.1	Plant coverage (% area of visual ground cover measured by a botanist/revegetation consultant)	25%	50%	60 %	Weeds coverage	No greater than 10% cover	No greater than 10% cover	1%				
Year after Planting	Year 1	Year 2	Autumn 2021																							
Survival (established plant density both planting and seeding)	90% (equivalent to 1.8 plants /m2)	70% (equivalent to 1.4 plants /m2)	See below																							
Average plant density (plants/m2)	1.8 to 2.7	1.8 to 2.7	2.1																							
Plant coverage (% area of visual ground cover measured by a botanist/revegetation consultant)	25%	50%	60 %																							
Weeds coverage	No greater than 10% cover	No greater than 10% cover	1%																							

**Rehabilitation and Weed Monitoring and Performance Criteria**

FMP 28	5.7 Rehabilitation and Weed Monitoring	At the end of rehabilitation and planting activities, a report will be provided detailing the quantities of seedlings installed and seed broadcast, and any variations from the Tranen FMP revegetation plan. This will be used as baseline data for comparison in future monitoring assessments.	At the end of each planting event	CLD	<p>Tranen has informally reported the rehabilitation management activities.</p> <p>The formal audit period for the FMP has now ceased, therefore this item is considered completed. Informal monitoring will continue until handover to the City.</p>	<p>R22-001_Alkimos Beach Monitoring - Lendlease Communities (Alkimos) Post Activity Report on Informal Inspection FMP and CAMP Site Condition May 2022</p> <p>R22-002_Alkimos Beach Monitoring - Lendlease Communities (Alkimos) Post Activity Report on Inspection FMP and CAMP Site Condition</p>
--------	--	---	-----------------------------------	-----	---	---

## 2022 Annual Compliance Report – EPBC 2011/5902

Alkimos Beach



FMP 29	The revegetation areas will be monitored biannually (includes weed monitoring) each spring and autumn, and maintained for a five-year period after installation (months are nominated rather than specific, as plant growth cycles are dependent on weather).	Biannually (Spring and Autumn) for 5 years	CLD	Tranen has informally reported the rehabilitation management activities.  The formal audit period for the FMP has now ceased, therefore this item is considered completed. Informal monitoring will continue until handover to the City.	R22-001_Alkimos Beach Monitoring - Lendlease Communities (Alkimos) Post Activity Report on Informal Inspection FMP and CAMP Site Condition May 2022  R22-002_Alkimos Beach Monitoring - Lendlease Communities (Alkimos) Post Activity Report on Inspection FMP and CAMP Site Condition
FMP 30	A monitoring report will be undertaken following each formal monitoring event, to assess if there are any issues requiring attention.	Following each formal monitoring event	CLD	Refer to FMP 29.	
FMP 31	One monitoring plot, of 2.5 m x 5 m will be established per revegetation area as well as one permanent photograph reference point at each monitoring plot.	NA	CLD	Refer to FMP 29.	
FMP 32	Photographic records will be captured prior to construction and annually to qualitatively assess density, diversity and weed cover.	Prior to construction and annually	CLD	Refer to FMP 29.	
FMP 33	The first assessment in spring will assess the developing threats to the stabilisation of each area and the short-term survival of the seedlings and weed cover. Any problems will be identified early so that comprehensive treatment(s) of the issue can be undertaken, and additional seedlings propagated if required.	Spring	CLD	This occurred prior to the audit period. Refer to the 2016 ACR.	R21-015_Strategen_EPBC20115902 ACR 2016
FMP 34	The second assessment in the following Spring will determine if there are any losses over the dry summer period, and this will form the basis for the maintenance winter program.	In the following Spring	CLD	This occurred prior to the audit period. Refer to the 2017 ACR.	R21-019_Strategen_EPBC20115902 ACR 2017

## 2022 Annual Compliance Report – EPBC 2011/5902

Alkimos Beach



Reference code	Activity	Action	Timing	Conformance	Comment	Evidence
FMP 35		The third and subsequent rehabilitation assessments will occur in Autumn and then the subsequent Spring.	In the following Autumn then Spring	CLD	This occurred prior to the audit period. Refer to the 2018 and 2019 ACR.	R21-004_Strategen_EPBC20115902 ACR 2018  R21-014_Emerge Associates_EPBC20115902 ACR 2019
FMP 36		Further remedial works may include additional revegetation works, weed management, rabbit control, additional monitoring.	Following assessments	CLD	Refer to FMP 26 for remedial works.	
<b>Corrective Measures</b>						
FMP 37	5.7.1 Corrective Measures	Monitoring and management corrective measures that may be required in the five years include but are not limited to the following: <ul style="list-style-type: none"> <li>• Re-brushing or re-mulching areas</li> <li>• Ongoing weed management</li> <li>• Replanting in areas</li> <li>• Tree guard repair/replacement</li> <li>• Fence, sign and pathway maintenance</li> </ul>	In the five years (biannual monitoring)	CLD	The formal audit period for the FMP has now ceased, therefore this item is considered completed. Informal monitoring will continue until handover to the City.  Tranen has completed two informal monitoring sessions in the reporting period, which have assessed these items. These are outlined in the applicable management measures below.	R22-001_Alkimos Beach Monitoring - Lendlease Communities (Alkimos) Post Activity Report on Informal Inspection FMP and CAMP Site Condition May 2022  R22-002_Alkimos Beach Monitoring - Lendlease Communities (Alkimos) Post Activity Report on Inspection FMP and CAMP Site Condition  R22-003 Fence Inspection-Beach Conservation Area

## 2022 Annual Compliance Report – EPBC 2011/5902

Alkimos Beach



Reference code	Activity	Action	Timing	Conformance	Comment	Evidence
FMP 38		Where the % weed species cover exceeds the 10% cover limit, additional weed spraying will be undertaken to reduce the abundance and spread of weed species into and within the FMP area.	Summer	CLD	As outlined in previous CARs, the average weed cover does not exceed 1% as of the final formal monitoring event  The formal audit period for the FMP has now ceased, therefore this item is considered completed. Informal monitoring will continue until handover to the City.	R22-001_Alkimos Beach Monitoring - Lendlease Communities (Alkimos) Post Activity Report on Informal Inspection FMP and CAMP Site Condition May 2022  R22-002_Alkimos Beach Monitoring - Lendlease Communities (Alkimos) Post Activity Report on Inspection FMP and CAMP Site Condition
FMP 39		All the contingency measures listed in Table 5 (of FMP) will be implemented if the target seedling survival completion criteria fall below 70% in two consecutive events.	Following assessments	CLD	As outlined in previous CARs, the seedling survival is above 90% in two consecutive events, as of the final formal monitoring event..  The formal audit period for the FMP has now ceased, therefore this item is considered completed. Informal monitoring will continue until handover to the City.	R22-001_Alkimos Beach Monitoring - Lendlease Communities (Alkimos) Post Activity Report on Informal Inspection FMP and CAMP Site Condition May 2022  R22-002_Alkimos Beach Monitoring - Lendlease Communities (Alkimos) Post Activity Report on Inspection FMP and CAMP Site Condition
<b>Feral Pests</b>						
FMP 40	5.8 Feral Pests	A combination of rabbit exclusion fencing, tree guards, and targeted rabbit control will be employed over a five year period.	Over 5 years	CLD	Refer to FMP 37.	

## 2022 Annual Compliance Report – EPBC 2011/5902

Alkimos Beach



Reference code	Activity	Action	Timing	Conformance	Comment	Evidence
		Where appropriate, seedlings located outside of these areas will be protected with tree guards. The guards will be rigid corflute held in place with hardwood stakes. A rabbit control program will also be initiated in advance of site works to provide longer term protection to seedlings. This will include a combination of warren destruction, rabbit haemorrhagic disease virus (RHDV) release, and Pindone baiting. Each tube stock will be planted with a plastic guard to prevent rabbits feeding.				
FMP 41		Observe for evidence of feral animals during the revegetation monitoring (biannually).	Biannually, during monitoring.	CLD	Refer to FMP 37.	
FMP 42		Implement additional rabbit control measures including fencing and biological controls	Contingency	CLD	Refer to FMP 37.	
FMP 43		Re-plant seedlings / revegetate areas impacted by rabbits	Contingency	CLD	Refer to FMP 37.	
FMP 44		Repair rabbit exclusion fencing and replace damaged tree guards.	Contingency	CLD	Refer to FMP 37.	
<b>Monitoring and Reporting</b>						
FMP 45	5.8.6 Monitoring and Reporting	The revegetation areas will be monitored biannually each spring and autumn and maintained for a five year period after installation within each site.	Biannually (Spring and Autumn) for 5 years	CLD	Refer to FMP 29.	
FMP 46		Foxes, rabbits and feral cats as part of the revegetation monitoring program will also be monitored and if observed reported.	NA	CLD	Refer to FMP 40.	
FMP 47		The monitoring report will be submitted to Lendlease following each formal monitoring event, and will focus on the impacts to planted seedlings, tree guards and ensuring the rabbit fence remains intact.	After monitoring event	CLD	The biannual monitoring reports were provided by Lendlease, which confirms that Tranen submitted the biannual reports to Lendlease.  The formal audit period for the FMP has now ceased, therefore this item is considered completed. Informal monitoring will continue until handover to the City.	



## 2022 Annual Compliance Report – EPBC 2011/5902

Alkimos Beach



Reference code	Activity	Action	Timing	Conformance	Comment	Evidence
<b>Bushfire Management Key Actions</b>						
FMP 48	Table 9: Bushfire Management Key Actions	No rubbish or vegetation will be burnt on site.	NA	CLD	Tranen has reported no signs of burning of rubbish or vegetation during their revegetation events or informal site visits.  The formal audit period for the FMP has now ceased, therefore this item is considered completed. Informal monitoring will continue until handover to the City.	R22-001_Alkimos Beach Monitoring - Lendlease Communities (Alkimos) Post Activity Report on Informal Inspection FMP and CAMP Site Condition May 2022  R22-002_Alkimos Beach Monitoring - Lendlease Communities (Alkimos) Post Activity Report on Inspection FMP and CAMP Site Condition
FMP 49		Construct perimeter roads and pathways between the ROS and residential areas to act as the key firebreak(s)	NA	CLD	The 2018 ACR confirmed that this action was compliant and therefore this is considered completed.	R21-004_Strategen_EPBC20115902 ACR 2018
FMP 50		During construction works a semi-permanent fencing will be installed around the FMP boundary interface with the urban development (subdivision) works to prevent access into the revegetated areas and the broader FMP area.	NA	CLD	The 2018 ACR indicates that fencing has been installed around the perimeter of the ROS prior to handover to the CoW. Therefore, this action is considered to be completed.	R21-004_Strategen_EPBC20115902 ACR 2018
FMP 51		Corrective measure will include replanting Carnaby's Black Cockatoos habitat and repair damage to fences as required.	NA	CLD	Refer to FMP 26.	
<b>Monitoring and Reporting</b>						

## 2022 Annual Compliance Report – EPBC 2011/5902

Alkimos Beach



Reference code	Activity	Action	Timing	Conformance	Comment	Evidence
FMP 52	<b>5.9.6 Monitoring and Reporting</b>	Any bushfire event in the foreshore will be reported to DFES and the City of Wanneroo.	NA	CLD	There have been no bushfire events recorded during the audit period.  The formal audit period for the FMP has now ceased, therefore this item is considered completed. Informal monitoring will continue until handover to the City.	R22-001_Alkimos Beach Monitoring - Lendlease Communities (Alkimos) Post Activity Report on Informal Inspection FMP and CAMP Site Condition May 2022  R22-002_Alkimos Beach Monitoring - Lendlease Communities (Alkimos) Post Activity Report on Inspection FMP and CAMP Site Condition
FMP 53		The annual monitoring report will include details of fire events.	After monitoring event	CLD	Refer to FMP 51.	
FMP 54		The monitoring of the Carnaby's Black-Cockatoo existing and rehabilitation foraging areas will be undertaken biannually each spring and autumn and maintained for a five-year period.	Each Spring and Autumn	CLD	Refer to FMP 28.	
<b>Erosion Control Key Actions</b>						
FMP 55	<b>5.10.4 Table 11: Erosion Control Key Actions</b>	Placement of brush/mulch over revegetation areas susceptible to potential erosion to a depth of 50 mm.	NA	CLD	Refer to FMP 37.	
FMP 56		Undertake revegetation of bare/open areas in accordance with the FMP Revegetation Management Plan (Tranen 2015)	NA	CLD	Refer to FMP 37.	
FMP 57		Installation of temporary fencing in/around the revegetation area.	NA	CLD	Refer to FMP 37.	

## 2022 Annual Compliance Report – EPBC 2011/5902

Alkimos Beach



Reference code	Activity	Action	Timing	Conformance	Comment	Evidence
FMP 58		Conservation fencing to the City of Wanneroo's requirements will be installed along the borders of the FMP which is adjacent to the Alkimos Beach subdivision prior to handover to the City of Wanneroo.	NA	CLD	Refer to FMP 7.	
FMP 59		A proportion of the rehabilitation works will be undertaken on old vehicle access tracks. These tracks are to be blocked at both ends to prevent future vehicle access in these areas.	NA	CLD	Refer to FMP 5.6	
<b>Monitoring and Reporting</b>						
FMP 60	<b>5.10.6 Monitoring and Reporting</b>	Monitoring of the erosion / open areas in the revegetation area will be biannually each spring and autumn and maintained for a five year period as part of the revegetation monitoring.	Biannually (Spring and Autumn) for 5 years	CLD	Refer to FMP 28.	
FMP 61		The monitoring report will be submitted to Lendlease following each formal monitoring event, to assess if there are any erosion issue(s) requiring attention.	After monitoring event	CLD	Refer to FMP 46.	
<b>Access Management: Beach Access Key Actions</b>						
FMP 62	<b>5.11.4 Table 13: Beach Access Key Actions</b>	Closure of old vehicle access tracks for rehabilitation in accordance with the FMP Revegetation Management Plan (Tranen 2015).	Post construction	CLD	Refer to FMP 57.	
FMP 63		During construction works a semi-permanent fencing will be installed around the FMP boundary interface with the road and urban development (subdivision) works to prevent access into the revegetated areas and the broader FMP area.	NA	CLD	Refer to FMP 49.	

## 2022 Annual Compliance Report – EPBC 2011/5902

Alkimos Beach



Reference code	Activity	Action	Timing	Conformance	Comment	Evidence
FMP 64		Undertake additional rehabilitation work of areas impacted from any unauthorised access within the revegetation areas.	NA	CLD	Tranen informal monitoring reports reported no evidence of unauthorised access.  The formal audit period for the FMP has now ceased, therefore this item is considered completed. Informal monitoring will continue until handover to the City.	R22-001_Alkimos Beach Monitoring - Lendlease Communities (Alkimos) Post Activity Report on Informal Inspection FMP and CAMP Site Condition May 2022  R22-002_Alkimos Beach Monitoring - Lendlease Communities (Alkimos) Post Activity Report on Inspection FMP and CAMP Site Condition
FMP 63		Undertake additional weed management if the monitoring determines the weed cover is above the 10% cover	NA	CLD	Refer to FMP 37.	
FMP 64		Ensure the fences if damaged are repaired or replaced.	NA	CLD	Refer to FMP 37.	
<b>Monitoring and Reporting</b>						
FMP 65	<b>4.9.6 Monitoring and Reporting</b>	Monitoring for unauthorised access will occur as part of the rehabilitation monitoring (biannually spring and autumn) which will be occur for a five-year period.	Annually until handover to the City of Wanneroo	CLD	The formal audit period for the FMP has now ceased, therefore this item is considered completed. Informal monitoring will continue until handover to the City.	R22-001_Alkimos Beach Monitoring - Lendlease Communities (Alkimos) Post Activity Report on Informal Inspection FMP and CAMP Site Condition May 2022  R22-002_Alkimos Beach Monitoring - Lendlease Communities (Alkimos) Post Activity Report on Inspection FMP and CAMP Site Condition

## 2022 Annual Compliance Report – EPBC 2011/5902

Alkimos Beach



Reference code	Activity	Action	Timing	Conformance	Comment	Evidence
FMP 66		The monitoring report will be submitted to Lendlease following each formal monitoring event, to assess if there are any erosion issue(s) requiring attention.	After monitoring event	CLD	The formal audit period for the FMP has now ceased, therefore this item is considered completed. Informal monitoring will continue until handover to the City.	R22-001_Alkimos Beach Monitoring - Lendlease Communities (Alkimos) Post Activity Report on Informal Inspection FMP and CAMP Site Condition May 2022  R22-002_Alkimos Beach Monitoring - Lendlease Communities (Alkimos) Post Activity Report on Inspection FMP and CAMP Site Condition
FMP 67	<b>6.0 Compliance Reporting</b>	To satisfy Condition 3 of the EPBC Act approval, Lend Lease will publish a compliance report every 12 months from the commencement of the construction works.	Annually	C	Refer to Condition No 3 in Table 6.	
FMP 68		The compliance report will contain a ROS area Carnaby's Black-Cockatoo habitat rehabilitation section which will include the following: <ul style="list-style-type: none"> <li>rehabilitation completion criteria and weed monitoring</li> <li>revegetation and weed contingency actions if required</li> <li>erosion monitoring within the rehabilitation area</li> <li>observations of feral pests</li> <li>temporary fencing and signage of the rehabilitation area</li> <li>fire incidences and the response.</li> </ul>	Annually	CLD	The 2022 compliance report contains the relevant Carnaby's Black Cockatoo habitat rehabilitation section in <b>Table 4</b> .  The formal audit period for the FMP has now ceased, therefore this item is considered completed.	R21-003_Emerge Associates_EPBC20115902 ACR 2020  R22-002_Alkimos Beach Monitoring - Lendlease Communities (Alkimos) Post Activity Report on Inspection FMP and CAMP Site Condition
<b>Land Ownership and Funding</b>						
FMP 69	<b>6.1 Land Ownership and Funding</b>	All foreshore access and community infrastructure works will be undertaken by Lendlease, and then maintained for a period of five years after practical completion.	For a period of five years.	CLD	Refer to FMP 36.	

## 2022 Annual Compliance Report – EPBC 2011/5902

Alkimos Beach



Reference code	Activity	Action	Timing	Conformance	Comment	Evidence
					Tranen has completed the five-year period of maintenance on behalf of Lendlease. Tranen continues to be engaged for monitoring on an informal basis.	
<b>City of Wanneroo Handover and Long-Term Management</b>						
FMP 70	<b>7.2 Post-handover implementation</b>	<p>Key management actions defined in this FMP are the responsibility of Lendlease for a period of five years or until the area or parts thereof are handed over to the City of Wanneroo. Post the fifth year and once Lendlease is in a position to hand over the area or parts thereof to the City, an audit report demonstrating compliance with the FMP management actions will be provided to the Commonwealth Department of Environment and Energy and the City of Wanneroo. The management actions outlined include:</p> <ul style="list-style-type: none"> <li>• Carnaby's Black Cockatoo revegetation and weed management</li> <li>• Fencing and signage installed</li> <li>• Feral pest management implemented</li> <li>• Bushfire, erosion and access management implemented.</li> </ul>	After a minimum of five years and following handover.	N/A	Lendlease is not in a position yet to handover the FMP area.	

# Appendix D

Conformance with Precinct Revegetation and Landscape Plan







## 2022 Annual Compliance Report – EPBC 2011/5902

Alkimos Beach



Table D1: Conformance with the Precinct Landscape and Revegetation Plan

Reference code	Action	Timing	Conformance	Comment	Evidence						
<b>Section 3 Planting schedule</b>											
PLRP 1	<p><i>Table 3 Objectives, targets and indicators – replication of 5 ha of Carnaby's habitat</i></p> <table border="1"> <thead> <tr> <th>Objective</th> <th>Performance indicator</th> </tr> </thead> <tbody> <tr> <td rowspan="3">Establish the equivalent of at least 5 ha of Carnaby's Black- Cockatoo habitat within the project area, through landscape planting.</td> <td>1) Establish at least 2,500 CBC habitat trees within the project area across a selected number of public open space (POS) areas</td> </tr> <tr> <td>2) Within the POS areas delineated by (1) above, at least 50% of plantings of trees and shrubs consist of plant species known to be primary feeding plants for Carnaby's Black Cockatoos. The establishment and survival of tree and shrub plantings is to the satisfaction of the City of Wanneroo.</td> </tr> <tr> <td>3) The City of Wanneroo accepts handover of landscape plantings of trees and shrubs established in the selected POS areas in accordance with (1) and (2) above.</td> </tr> </tbody> </table>	Objective	Performance indicator	Establish the equivalent of at least 5 ha of Carnaby's Black- Cockatoo habitat within the project area, through landscape planting.	1) Establish at least 2,500 CBC habitat trees within the project area across a selected number of public open space (POS) areas	2) Within the POS areas delineated by (1) above, at least 50% of plantings of trees and shrubs consist of plant species known to be primary feeding plants for Carnaby's Black Cockatoos. The establishment and survival of tree and shrub plantings is to the satisfaction of the City of Wanneroo.	3) The City of Wanneroo accepts handover of landscape plantings of trees and shrubs established in the selected POS areas in accordance with (1) and (2) above.	Revegetation - during revegetation	C	<p>No additional CBC POSs have been constructed during this audit period.</p> <p>A total of 3527 CBC habitat trees have been planted to date with 4195 remaining to achieve 7722 CBC trees across 5.051 ha.</p> <p>The completed Parks A, D, F, F1, F2, PAW, G and U contribute a total of 2.394 ha (or 47%) of the overall target of the 5.051 ha of CBC habitat. These parks have 18% CBC species (trees and shrubs)</p> <p>The future POS areas (Parks J, O, P and R) will require 82% CBC species (trees and shrubs) over 2.657 ha to achieve the required 50%.</p> <p>Infill planting for CBC species has occurred in POS A.</p>	<p>D21-003_Emerge Alkimos POS actual and proposed CBC plant species</p> <p>D21-004_Emerge Alkimos Beach CBC plant tracking spreadsheet VN</p> <p>R21-004_Strategen_EPBC20115902 ACR 2018</p> <p>R22-004_Alkimos Beach Estate CBC Species Monitoring August 2022</p> <p>R22-005_Quotation: Alkimos Beach POS A - Supply &amp; install CBC plants to infill</p>
Objective	Performance indicator										
Establish the equivalent of at least 5 ha of Carnaby's Black- Cockatoo habitat within the project area, through landscape planting.	1) Establish at least 2,500 CBC habitat trees within the project area across a selected number of public open space (POS) areas										
	2) Within the POS areas delineated by (1) above, at least 50% of plantings of trees and shrubs consist of plant species known to be primary feeding plants for Carnaby's Black Cockatoos. The establishment and survival of tree and shrub plantings is to the satisfaction of the City of Wanneroo.										
	3) The City of Wanneroo accepts handover of landscape plantings of trees and shrubs established in the selected POS areas in accordance with (1) and (2) above.										

## 2022 Annual Compliance Report – EPBC 2011/5902

Alkimos Beach



Reference code	Action	Timing	Conformance	Comment	Evidence																																										
				Refer to PRLP 8 for details of POS handover.																																											
PLRP 2	<p><b>Table 4</b> provides an indicative Precinct by Precinct breakdown of the Carnaby's Cockatoo tree targets (refer to <b>Appendix G</b> for a map) to track progress against the ultimate target described in Table 4 of the PRLP (reproduced below), across all precincts. These are interim targets for monitoring purposes only; the total of 2,500 trees remains the ultimate compliance target.</p> <p><i>PRLP Table 4: Precinct breakdown of Carnaby's Cockatoo tree targets</i></p> <table border="1"> <thead> <tr> <th>Precinct</th> <th>Area (ha)</th> <th>Carnaby's Tree Target</th> <th>Target &gt; 5 ha CBC habitat (ha)</th> <th>Target &gt;2,500 CBC species</th> <th>CBC primary feeding plants</th> <th>Non-CBC primary feeding plants</th> </tr> </thead> <tbody> <tr> <td>1</td> <td>50.30</td> <td>1,000</td> <td>1.483</td> <td>1,594</td> <td>10,840</td> <td>40,911</td> </tr> <tr> <td>2</td> <td>47.87</td> <td>500</td> <td>0.911</td> <td>1,968</td> <td>3,810</td> <td>14,072</td> </tr> <tr> <td>3</td> <td>32.51</td> <td>500</td> <td>1.124</td> <td>1,846</td> <td>36,159</td> <td>9,040</td> </tr> <tr> <td>4</td> <td>43.89</td> <td>500</td> <td>1.532</td> <td>1,580</td> <td>41,011</td> <td>10,253</td> </tr> <tr> <td colspan="3">TOTAL</td> <td>5.051</td> <td>6,988</td> <td>91,820 (55%)</td> <td><b>74,276 (45%)</b></td> </tr> </tbody> </table>	Precinct	Area (ha)	Carnaby's Tree Target	Target > 5 ha CBC habitat (ha)	Target >2,500 CBC species	CBC primary feeding plants	Non-CBC primary feeding plants	1	50.30	1,000	1.483	1,594	10,840	40,911	2	47.87	500	0.911	1,968	3,810	14,072	3	32.51	500	1.124	1,846	36,159	9,040	4	43.89	500	1.532	1,580	41,011	10,253	TOTAL			5.051	6,988	91,820 (55%)	<b>74,276 (45%)</b>	Revegetation - during planning	N/A	No additional CBC POS areas have been constructed during this audit period.	R22-004_Alkimos Beach Estate CBC Species Monitoring August 2022
Precinct	Area (ha)	Carnaby's Tree Target	Target > 5 ha CBC habitat (ha)	Target >2,500 CBC species	CBC primary feeding plants	Non-CBC primary feeding plants																																									
1	50.30	1,000	1.483	1,594	10,840	40,911																																									
2	47.87	500	0.911	1,968	3,810	14,072																																									
3	32.51	500	1.124	1,846	36,159	9,040																																									
4	43.89	500	1.532	1,580	41,011	10,253																																									
TOTAL			5.051	6,988	91,820 (55%)	<b>74,276 (45%)</b>																																									
PLRP 3	For each landscaping stage of the development an indicative Plant Schedule is prepared and updated as required and will be used as a guide to check that planting numbers are trending toward compliance with the overall tree target.	Revegetation - during planning	N/A	No additional CBC POS areas have been constructed during this audit period.	D22-004_2022 ACR - documentation 2022.11.08 updated																																										
PLRP 4	All future planting schedules and landscape designs will be in accordance with the targets in the PLRP.	Revegetation - during planning	C	The tracking sheet provides guidance for future landscape designs.	D21-003_Emerge_Alkimos POS actual and proposed CBC plant species  D21-004_Emerge_Alkimos Beach CBC plant tracking spreadsheet VN																																										

## 2022 Annual Compliance Report – EPBC 2011/5902

Alkimos Beach



Reference code	Action	Timing	Conformance	Comment	Evidence																								
<b>Section 4 Monitoring, Reporting and Review</b>																													
PLRP 5	<p><b>Table 5</b> includes timeframes, contingency measures, monitoring and reporting measures for achieving Condition 12 of EPBC 2011/5902.</p> <p><i>Table 5: Monitoring actions</i></p> <table border="1"> <thead> <tr> <th>Performance indicator</th> <th>Monitoring Actions</th> <th>Type of monitoring action</th> <th>Timing</th> </tr> </thead> <tbody> <tr> <td rowspan="3">Establish at least 2,500 CBC habitat trees within landscape plantings in the project area across a selected number of public open space (POS) areas.</td> <td>Review landscape plans, plant orders and planting schedules to determine number and type of species planted (i.e. CBC species)</td> <td>Desktop review</td> <td>Annually</td> </tr> <tr> <td>Record the species, location and number of CBC plants installed during the planting phase.</td> <td>Within each precinct where planting has been undertaken</td> <td>During planting</td> </tr> <tr> <td>Monitor success of species planted and determine whether infill planting is required.</td> <td>Within each precinct</td> <td>Annually until handover of each planting stage to City of Wanneroo</td> </tr> <tr> <td rowspan="3">Within the plantings delineated above, at least 50% of plantings of trees and shrubs consist of plant species known to be primary feeding plants for Carnaby's Black Cockatoos.</td> <td>Review landscape plans, plant orders and planting schedules to determine number and type of species planted (i.e. CBC species).</td> <td>Desktop review</td> <td>Annually</td> </tr> <tr> <td>Record the species, location and number of CBC plants installed during the planting phase.</td> <td>Within each precinct where planting has been undertaken</td> <td>During planting</td> </tr> <tr> <td>Monitor success of species planted and determine whether infill planting is required.</td> <td>Within each precinct</td> <td>Annually until handover of each planting stage to City of Wanneroo</td> </tr> </tbody> </table>	Performance indicator	Monitoring Actions	Type of monitoring action	Timing	Establish at least 2,500 CBC habitat trees within landscape plantings in the project area across a selected number of public open space (POS) areas.	Review landscape plans, plant orders and planting schedules to determine number and type of species planted (i.e. CBC species)	Desktop review	Annually	Record the species, location and number of CBC plants installed during the planting phase.	Within each precinct where planting has been undertaken	During planting	Monitor success of species planted and determine whether infill planting is required.	Within each precinct	Annually until handover of each planting stage to City of Wanneroo	Within the plantings delineated above, at least 50% of plantings of trees and shrubs consist of plant species known to be primary feeding plants for Carnaby's Black Cockatoos.	Review landscape plans, plant orders and planting schedules to determine number and type of species planted (i.e. CBC species).	Desktop review	Annually	Record the species, location and number of CBC plants installed during the planting phase.	Within each precinct where planting has been undertaken	During planting	Monitor success of species planted and determine whether infill planting is required.	Within each precinct	Annually until handover of each planting stage to City of Wanneroo	Revegetation - during planning	C	<p>Annual update of the monitoring actions and records has occurred.</p> <p>No CBC POS areas were constructed or achieved practical completion within this audit period</p> <p>Nutrien Water, the landscaping contractor, has provided a CBC species monitoring report for POS A and POS G.</p> <p>Recommended infill is required for POS A and a quotation and works were undertaken for infill planting.</p>	<p>D21-003_Emerge_Alkimos POS actual and proposed CBC plant species</p> <p>D21-004_Emerge_Alkimos Beach CBC plant tracking spreadsheet VN</p> <p>D22-004_2022 ACR - documentation 2022.11.08 updated</p> <p>R22-004_Alkimos Beach Estate CBC Species Monitoring August 2022</p> <p>R22-005_Quotation: Alkimos Beach POS A - Supply &amp; install CBC plants to infill</p>
Performance indicator	Monitoring Actions	Type of monitoring action	Timing																										
Establish at least 2,500 CBC habitat trees within landscape plantings in the project area across a selected number of public open space (POS) areas.	Review landscape plans, plant orders and planting schedules to determine number and type of species planted (i.e. CBC species)	Desktop review	Annually																										
	Record the species, location and number of CBC plants installed during the planting phase.	Within each precinct where planting has been undertaken	During planting																										
	Monitor success of species planted and determine whether infill planting is required.	Within each precinct	Annually until handover of each planting stage to City of Wanneroo																										
Within the plantings delineated above, at least 50% of plantings of trees and shrubs consist of plant species known to be primary feeding plants for Carnaby's Black Cockatoos.	Review landscape plans, plant orders and planting schedules to determine number and type of species planted (i.e. CBC species).	Desktop review	Annually																										
	Record the species, location and number of CBC plants installed during the planting phase.	Within each precinct where planting has been undertaken	During planting																										
	Monitor success of species planted and determine whether infill planting is required.	Within each precinct	Annually until handover of each planting stage to City of Wanneroo																										

## 2022 Annual Compliance Report – EPBC 2011/5902

Alkimos Beach



Reference code	Action	Timing	Conformance	Comment	Evidence
<b>Section 4.1 Survival targets</b>					
PLRP 6	Following the completion of a landscaping stage (POS or streetscape), the landscape architects visit the area on behalf of Lendlease to ensure the specifications have been met by the contractor (including the planting of specified Carnaby's Black Cockatoo species as documented within the approved design drawings).	During Construction	N/A	No CBC POS areas were constructed or achieved practical completion within this audit period.	D22-004_2022 ACR - documentation 2022.11.08 updated
PLRP 7	Prior to handover to the City, Lendlease will ensure the 90% plant survival target is met to enable the handover to the City to be finalised.	During Construction	C	No CBC Parks have been handed over to the City in this auditing period. Lendlease has advised that Nutrien Water, the landscaping contractor, undertakes regular maintenance checks of completed POS areas to ensure that they meet a 90% survival target prior to handover.	D22-004_2022 ACR - documentation 2022.11.08 updated

## 2022 Annual Compliance Report – EPBC 2011/5902

Alkimos Beach



Reference code	Action	Timing	Conformance	Comment	Evidence
<b>Section 4.2 Timeframes for the implementation</b>					
PLRP 8	Handover to the City will be undertaken a minimum of 2 years after practical completion.	24 months following planting	N/A	<p>No CBC parks were completed in this auditing period.</p> <p>Handover POS S and Street trees to the CoW occurred after a minimum of 2 years after practical completion.</p> <p>The remaining POS are either yet to achieve practical completion or are yet to be handed over to the City.</p>	<p>D22-004_2022 ACR - documentation 2022.11.08 updated</p> <p>L22-001_POS S handover accepted 9-3-2022</p> <p>E22-002_Alkimos Beach - POS S trees to verge 28.06.22</p>
PLRP 9	Following handover, maintenance of streetscapes and POS will be managed by the City.	On-going following handover	N/A	No CBC parks were completed in this auditing period.	N/A
PLRP 10	Handover of planting across the site will be staged in accordance with the park and street delivery. All parks and streets are expected to be handed over by the completion of the project. Refer to the indicative precinct plan in <b>Appendix G</b> for the breakdown of park and street delivery across the Estate.	On completion of each area During Construction	N/A	POS S and street tree handover occurred during this audit period.	<p>L22-001_POS S handover accepted 9-3-2022</p> <p>E22-002_Alkimos Beach - POS S trees to verge 28.06.22</p>

## 2022 Annual Compliance Report – EPBC 2011/5902

Alkimos Beach



Reference code	Action	Timing	Conformance	Comment	Evidence
<b>Section 4.3 City of Wanneroo process</b>					
PLRP 11	For each stage of landscaping (streetscape or POS) a detailed design is submitted to the City for their review and approval.	Pre-construction	N/A	No new stages of landscaping associated with CBC habitat were proposed to commence construction in this audit period and therefore no detailed designs were submitted to the City for their review and approval.	N/A
PLRP 12	The City assesses each design to ensure it complies with their standards and confirms that ultimately the City will be able to manage the area following the required 2 year maintenance period.	Handover	N/A	No detailed designs were submitted to the City for their review and approval.	N/A
PLRP 13	As the management of the park in the long term is undertaken by the City, a City officer visits the area prior to handover of a stage to the City, to ensure it meets the specifications (and therefore planting of specified Carnaby's Black Cockatoo species as documented within the approved design drawings) and survival targets.	Prior to handover	N/A	No handover has occurred during this audit period.	N/A
PLRP 14	Once a stage of landscaping is handed over to the City, the requirements of the Condition for that park and streetscape are considered complete. The City accepts no liability for the requirements of the conditions of the EPBC Act approval and will not report on the ongoing management of the Carnaby's species.	Handover	N/A	Refer to Condition 12 A1 in <b>Table 6</b> .	
PLRP 15	Due to the City requirements streetscape works in residential streets will be completed at the time of the front yard landscaping by the landscape contractor. In this instance it is incumbent on the landscape contractor to ensure that planting schedules meet the PLRP requirements.	Prior to approval of management plans	C	There are no requirements for streetscape planting within the PLRP.	N/A
PLRP 16	Clearing within the 'no clearing area' on Attachment C of EPBC 2011/5902 is not permitted to commence until the Management Plans required under Condition 10-12 of the approval are approved.	Prior to approval of management plans	CLD	Action assessed as completed during 2014 ACR.	R21-006_Strategen_EPBC20115902 ACR 2014

## 2022 Annual Compliance Report – EPBC 2011/5902

Alkimos Beach



Reference code	Action	Timing	Conformance	Comment	Evidence
<b>Section 4.4 Annual reporting requirements</b>					
PLRP 17	Lendlease is required to submit an ACR in accordance with Condition 3 of EPBC 2011/5902, as detailed below: <i>'Within three months of every 12 month anniversary of the commencement of the action, the person taking the action must publish a report on their website addressing compliance with each of the conditions of this approval, including implementation of any management plans as specified in the conditions. Documentary evidence providing proof of the date of publication and non-compliance with any of the conditions of this approval must be provided to the Department at the same time as the compliance report is published. Each management plan must be published on the website for the length of the approval.'</i>	Annually	C	Refer to Condition No. 3 in <b>Table 6</b> of this document.	
PLRP 18	In accordance with the PLRP the following details are required to be included in the ACR: <ul style="list-style-type: none"> <li>• An update of any completed stages or tendered landscape for future stages.</li> <li>• Report against planting targets and landscape survival targets.</li> <li>• Update of completed tree planting for each stage.</li> <li>• Amendments to precinct and staging plans.</li> <li>• Updated plant schedules for each stage of the development.</li> </ul>	Annually	C	No additional CBC POS areas were constructed this audit period.  POS S and street tree handover occurred during this audit period.  Future planting schedules are provided in <b>Appendix E</b> and tracking against the rehabilitation targets and the revised staging plan is provided in <b>Appendix G</b> .	D22-004_2022 ACR - documentation 2022.11.08 updated  L22-001_POS S handover accepted 9-3-2022  E22-002_Alkimos Beach - POS S trees to verge 28.06.22  D21-003_Emerge_Alkimos POS actual and proposed CBC plant species  D21-004_Emerge_Alkimos Beach CBC plant tracking spreadsheet VN



# Appendix E

Plant Schedules



Precinct	Park	Status	Actual Area	Planting Area (m2) <sup>[1]</sup>	Planting Area		Use	Classification	Trees		Shrubs		Total	Total	Total	Comments
					(ha)	(%)			CBC	Non-CBC	CBC	Non-CBC	CBC	Non-CBC		
1	A	Complete	1,966	786	0.079	40%	Local	Passive Open Space	18	45	63	1,715	81	1,760	1,841	
1	D	Complete <sup>#</sup>	921	461	0.046	50%	Local	Passive Open Space	31	13	243	709	274	722	996	D & E built as one stage, handed over to CoW 06/19
1	F	Complete <sup>#</sup>	12,658	6,962	0.696	55%	Neighbourhood	Passive Open Space	150	129	374	21,790	524	21,919	22,443	F, F1 & F2 built as one stage, handed over to CoW 09/19
1	F1	Complete <sup>#</sup>	1,071	643	0.064	60%	Local	Passive Open Space								F, F1 & F2 built as one stage, handed over to CoW 09/19
1	F2 PAW	Complete <sup>#</sup>	843	801	0.080	95%	Local	Passive Open Space								F, F1 & F2 built as one stage, handed over to CoW 09/19
2	G	Complete	2,425	2,183	0.218	90%	Local	Natural - Conservation Interface	455	63	927	4,133	1,382	4,196	5,578	
3	J	Future*	11,195	9,516	0.952	85%	Neighbourhood	Reflect and Restore - Dune Link	1,905	30	28,390	7,356	30,295	7,386	37,681	~80% of plantings to POS portion are CBC feeding species
3	O	Future*	1,818	1,727	0.173	95%	Local	Passive Open Space	710	-	5,454	566	6,164	566	6,730	~80% of plantings to POS portion are CBC feeding species
4	P	Future*	12,058	4,582	0.458	38%	Neighbourhood	Active Park - Include area of high natural value	10	15	12,210	2,640	12,220	2,655	14,875	~80% of plantings to POS portion are CBC feeding species
4	R	Future*	13,100	10,742	1.074	82%	Neighbourhood	Natural - Conservation interface	1,570	20	27,221	6,680	28,791	6,700	35,491	~80% of plantings to POS portion are CBC feeding species
2	S	Complete	20,372	6,926	0.693	34%	Neighbourhood	Reflect and Restore - Dune Link	1,513	33	86	11,721	1,599	11,754	13,353	
1	U	Complete <sup>#</sup>	39,862	5,182	0.518	13%	Neighbourhood	Active Park - Include area of high natural value	1,360	120	7,255	18,042	8,615	18,162	26,777	Handed over to CoW 06/19
<b>Totals</b>			<b>118,289</b>	<b>50,510</b>	<b>5.05</b>				<b>7,722</b>	<b>468</b>	<b>82,223</b>	<b>75,352</b>	<b>89,945</b>	<b>75,820</b>	<b>165,765</b>	

Summary 'CBC parks' only (Cond 12a & 12b)		Cond 12b		Cond 12a		Cond 12b		
Parks and planting areas i.e. allocated to CBCs (in ha)		Total Trees (CBC)	Total Trees (non CBC)	Total Shrubs (CBC)	Total Shrubs (non CBC)	Total trees & shrubs (CBC)	Total trees & shrubs (non CBC)	Total trees & shrubs
Existing Parks A, D, F, G, S, U:	2.394	3,527	403	8,948	58,110	12,475	58,513	70,988
						18%	82%	
Future Parks J (partial), O, P, R:	2.657	4,195	65	73,275	17,242	77,470	17,307	94,777
						82%	18%	
<b>Total ha</b>	<b>5.051</b>	<b>7,722</b>				<b>89,945</b>	<b>75,820</b>	<b>165,765</b>
						<b>54%</b>	<b>46%</b>	

**Key**

Parks dedicated to CBCs species and included in the calculations above

\*Planting targets for future parks are indicative only and no. may change depending on the availability of plants at the time

Complete<sup>#</sup> and handed over

# Appendix F

Planting Targets Tracking



# Alkimos Beach - Native Plants - Planted to date

Plant Tracking Spreadsheet (vers. N)

CBC Parks (Cond 12a+12b)\*\*

PRECINCT 1						PRECINCT 2					
CBC only	T+S all			CBC only	T+S all	CBC only	T+S all	CBC only	T+S all	CBC only	T+S all
3				13		15		21		22	

Botanical Name	Common Name	Primary Feeding Plants CBCs**	Tree / Shrub / GC/ Grass	CBC Park			CBC Park			CBC Park			CBC PARK			CBC PARK			CBC PARK		
				Stg 1 PARK A	Park D only	Stage 7 Park F	Stg 10 Park U	Park G	PARK S	Stg 1 PARK A	Park D only	Stage 7 Park F	Stg 10 Park U	Park G	PARK S	Stg 1 PARK A	Park D only	Stage 7 Park F	Stg 10 Park U	Park G	PARK S
<b>TREES &amp; SHRUBS</b>																					
<i>Acacia cyclops</i>	Western Coastal Wattle	N	Shrub	0	0	0				0	0	0	0	0	0	0	0	0	0	0	0
<i>Acacia drummondii</i>		N	Shrub	0	0	0				0	0	0	0	0	0	0	0	0	0	0	0
<i>Acacia lasiocarpa</i>		N	Shrub	0	142	142				0	784	784	0	0	0	0	0	0	0	703	703
<i>Acacia littorea</i>		N	Shrub	0	0	0				0	0	0	0	0	0	0	0	0	0	0	0
<i>Acacia saligna prostrate</i>	Dwarf Orange Wattle	Y	Shrub	0	0	0				0	0	0	1682	0	1682	0	0	0	0	0	0
<i>Acanthocarpus preisii</i>		N	Shrub	0	0	0				0	374	374	0	0	0	0	0	0	0	703	703
<i>Agonis flexuosa nana</i>	Dwarf WA Peppermint	Y	Shrub	0	0	0				0	0	0	2362	0	2362	0	0	0	0	0	0
<i>Alyogyne 'Blue Heeler'</i>	Native Hibiscus	N	Shrub	0	0	0				0	0	0	0	0	0	0	0	0	0	0	0
<i>Alyogyne hugelii</i>		N	Shrub	0	0	0				0	0	0	0	0	0	0	0	0	0	0	0
<i>Alyogyne 'Mellissa Anne'</i>	Lilac Hibiscus	N	Shrub	0	0	0				0	0	0	0	0	0	0	0	0	0	0	0
<i>Atriplex cinerea</i>	Coast Saltbush	N	Shrub	0	0	0				0	1249	1249	0	0	0	0	0	0	0	703	703
<i>Atriplex isatidea</i>		N	Shrub	0	0	0				0	0	0	0	0	0	0	0	0	0	703	703
<i>Atriplex nummularia</i>		N	Shrub	0	0	0	0	103	103	0	0	0	0	0	0	0	0	0	0	0	0
<i>Baeckea virgata nana</i>		N	Shrub	0	0	0				0	0	0	0	0	0	0	0	0	0	0	0
<i>Banksia ashbyi dwarf</i>	Dwarf Ashby's Banksia	Y	Shrub	0	0	0				0	0	0	382	0	382	0	0	0	0	0	0
<i>Banksia blechnifolia</i>		Y	Shrub	0	0	0				0	0	0	0	0	0	0	0	0	34	0	34
<i>Banksia blechnifolia (seed)</i>		Y	Shrub	0	0	0				0	0	0	0	0	0	0	0	0	0	0	0
<i>Banksia dallanneyi</i>	Couch Honeygot	Y	Shrub	0	0	0				0	0	0	0	0	0	0	0	0	26	0	26
<i>Banksia hookeriana</i>	Hookers Banksia	Y	Shrub	0	0	0				0	0	0	0	0	0	0	0	0	0	0	0
<i>Banksia nivea</i>	Dryandra	Y	Shrub	0	0	0	197	0	197	0	0	0	1155	0	1155	0	0	0	0	0	0
<i>Banksia repens (seed)</i>		Y	Shrub	0	0	0				0	0	0	0	0	0	0	0	0	0	0	0
<i>Boronia crenulata 'Pink Passion'</i>	Boronia	N	Shrub	0	0	0				0	0	0	0	0	0	0	0	0	0	0	0
<i>Callistemon citrinus 'Little John'</i>	Little John Bottlebrush	N	Shrub	0	0	0	0	103	103	0	0	0	0	3490	3490	0	0	0	0	0	0
<i>Callistemon salignus 'Great Balls of Fire'</i>	Bottlebrush	N	Shrub	0	0	0				0	0	0	0	0	0	0	0	0	0	0	0
<i>Callistemon viminalis</i>	Red Bottlebrush	Y	Shrub	0	0	0				0	0	0	0	0	0	0	0	0	0	0	0
<i>Callistemon viminalis 'Little John'</i>		Y	Shrub	0	0	0				0	0	0	0	0	0	0	0	0	0	0	0
<i>Callistemon viminalis 'Matthew Flinders'</i>	Bottlebrush	Y	Shrub	0	0	0	46	0	46	0	0	0	0	0	0	0	0	0	0	0	0
<i>Calothamnus quadrifidus</i>	One Sided Bottle Brush	N	Shrub	0	251	251				0	2179	2179	0	0	0	0	0	0	0	0	0
<i>Calothamnus quadrifidus 'Clean &amp; Green'</i>	One Sided Bottle Brush 'Clean and Green'	N	Shrub	0	0	0				0	0	0	0	0	0	0	0	0	0	0	0
<i>Chamaelaucium uncinatum</i>	Geraldton Wax	N	Shrub	0	0	0				0	0	0	0	0	0	0	489	489	0	0	0
<i>Chamaelaucium uncinatum 'My Sweet Sixteen'</i>	Wax	N	Shrub	0	0	0				0	326	326	0	0	0	0	0	0	0	0	0
<i>Chorizema cordatum</i>	Pea	N	Shrub	0	0	0				0	374	374	0	0	0	0	0	0	0	0	0
<i>Chorizema varium</i>	Limestone Pea	N	Shrub	0	0	0				0	0	0	0	384	384	0	0	0	0	0	0
<i>Conospermum stoechadis</i>		N	Shrub	0	0	0				0	0	0	0	0	0	0	0	0	0	0	0
<i>Eremophila glabra</i>	Tar Bush	Y	Shrub	0	0	0				0	0	0	0	0	0	927	0	927	26	0	26
<i>Eremophila glabra 'Silver Flame'</i>	Tar Bush	Y	Shrub	63	0	63				0	0	0	0	0	0	0	0	0	0	0	0
<i>Eremophila maculata 'Lemon Delight'</i>	Eremophila Lemon Delight	N	Shrub	0	0	0				0	0	0	0	0	0	0	0	0	0	0	0
<i>Eremophila nivea 'Spring Mist'</i>	Emu Bush	N	Shrub	0	90	90	0	42	42	0	784	784	0	0	0	0	0	0	0	0	0
<i>Eutaxia obovata nana</i>		N	Shrub	0	113	113				0	0	0	0	0	0	0	0	0	0	0	0
<i>Frankenia pauciflora</i>		N	Shrub	0	0	0				0	1249	1249	0	0	0	0	0	0	0	0	0
<i>Gastrolobium capitatum</i>		N	Shrub	0	0	0				0	0	0	0	0	0	0	0	0	0	0	0
<i>Gastrolobium nervosum (seed)</i>		N	Shrub	0	0	0				0	0	0	0	0	0	0	0	0	0	0	0
<i>Gazania montezuma</i>		N	Shrub	0	0	0				0	0	0	0	0	0	0	0	0	0	0	0
<i>Grevillea bipinnatifida</i>	Fuschia Grevillia	Y	Shrub	0	0	0				0	0	0	0	0	0	0	0	0	0	0	0
<i>Grevillea 'Ella Bella'</i>		N	Shrub	0	0	0				0	0	0	0	2362	2362	0	0	0	0	0	0
<i>Grevillea obtusifolia 'Gin Gin Gem'</i>	Gin Gin Gem'	N	Shrub	0	220	220				0	326	326	0	1057	1057	0	0	0	0	0	0
<i>Grevillea preissii</i>	Mini Marvel'	N	Shrub	0	0	0				0	0	0	0	0	0	0	0	0	0	0	0
<i>Grevillea preissii 'Gilt Dragon'</i>		N	Shrub	0	0	0				0	0	0	0	0	0	0	0	0	0	0	0
<i>Grevillea 'Robyn Gordon'</i>		N	Shrub	0	0	0				0	0	0	0	1420	1420	0	0	0	0	0	0
<i>Grevillea 'Sea Spray'</i>		N	Shrub	0	0	0				0	0	0	0	0	0	0	489	489	0	0	0

EPBC	
Total CBC Plants (Trees and Shrubs) - CBC PARKS ONLY	Total Plants - Trees & Shrubs (CBC PARKS ONLY)

0	829
0	0
0	1629
0	0
1682	1682
0	1077
2362	2362
0	0
0	0
0	0
0	1952
0	703
0	103
0	0
382	382
34	34
0	0
26	26
0	0
1352	1352
0	0
0	0
0	3593
0	0
0	0
46	46
0	2430
0	0
0	489
0	326
0	374
0	384
0	0
953	953
63	63
0	0
0	916
0	113
0	1249
0	0
0	0
0	0
0	2362
0	1603
0	0
0	0
0	1420
0	489







				CBC Park			CBC Park			CBC Park			CBC PARK			CBC PARK			CBC PARK		
<i>Santalum acuminatum</i>	Native Peach (Quandong)	N	Tree	0	0	0				0	0	0	0	0	0	0	0	0	0	0	0
<i>Tipuana tipu</i>	Tipuana	Y	Tree	0	0	0	3	0	3	14	0	14	0	0	0	0	0	0	0	0	0
<i>Xanthorrhoea preissii</i>	Grass tree	Y	Tree	0	0	0	26	0	26	20	0	20	0	0	0	0	0	0	0	0	0
<b>Planting Qty - CBC trees/CBC park</b>				18	45	63	31	13	44	150	129	279	1,360	120	1,480	455	63	518	1,513	33	1,546
<b>Planting Qty - CBC shrubs/CBC park</b>				63	1,715	1,778	243	709	952	374	20,822	21,196	7,255	18,042	25,297	927	4,133	5,060	86	10,964	11,050
<b>Planting Qty. Total CBCs/CBC park</b>				<b>81</b>	<b>1,760</b>	<b>1,841</b>	<b>274</b>	<b>722</b>	<b>996</b>	<b>524</b>	<b>20,951</b>	<b>21,475</b>	<b>8,615</b>	<b>18,162</b>	<b>26,777</b>	<b>1,382</b>	<b>4,196</b>	<b>5,578</b>	<b>1,599</b>	<b>10,997</b>	<b>12,596</b>

Total CBC Plants (Trees and Shrubs) - CBC PARKS ONLY	Total Plants - Trees & Shrubs (CBC PARKS ONLY)
0	0
17	17
46	46
<b>3,527</b>	<b>3,930</b>
8,948	65,333
<b>12,475</b>	<b>69,263</b>
<b>18%</b>	

\*Plants for Carnaby's as listed in Groom, C (2011) Plants Used by Carnaby's Black Cockatoo. Department of Environment and Planning, NSW Government.

<sup>#</sup>Corymbia maculata is considered a roosting tree for CBCs as per the DEC species list. It has still been included in the overall CBC tree count as it is a habitat tree but excluded from the 50% target, which is currently under review.

\*\*POS A, D, F, F1, F2 PAW, G, J, O, P, R, S, U

\*\*\*Planting targets for future parks are indicative only and no. may change depending on the availability of plants at the time

EPBC summary	
Total CBC species only (CBC Parks built to date)	12,475
Total all trees and Shrubs (CBC Parks built to date)	69,263
Percentage of CBC species (CBC Parks built to date)	18%
Total CBC species only (Future CBC Parks)	77,470
Total all trees and Shrubs (Future CBC Parks)	94,777
Percentage of CBC species (Future CBC Parks)	82%

CBC Parks - Total CBCs	89,945
CBC Parks - Total CBC & non CBC	164,040
% of CBC species across 5ha planting area	55%



# Appendix G

Precinct and Staging Plan







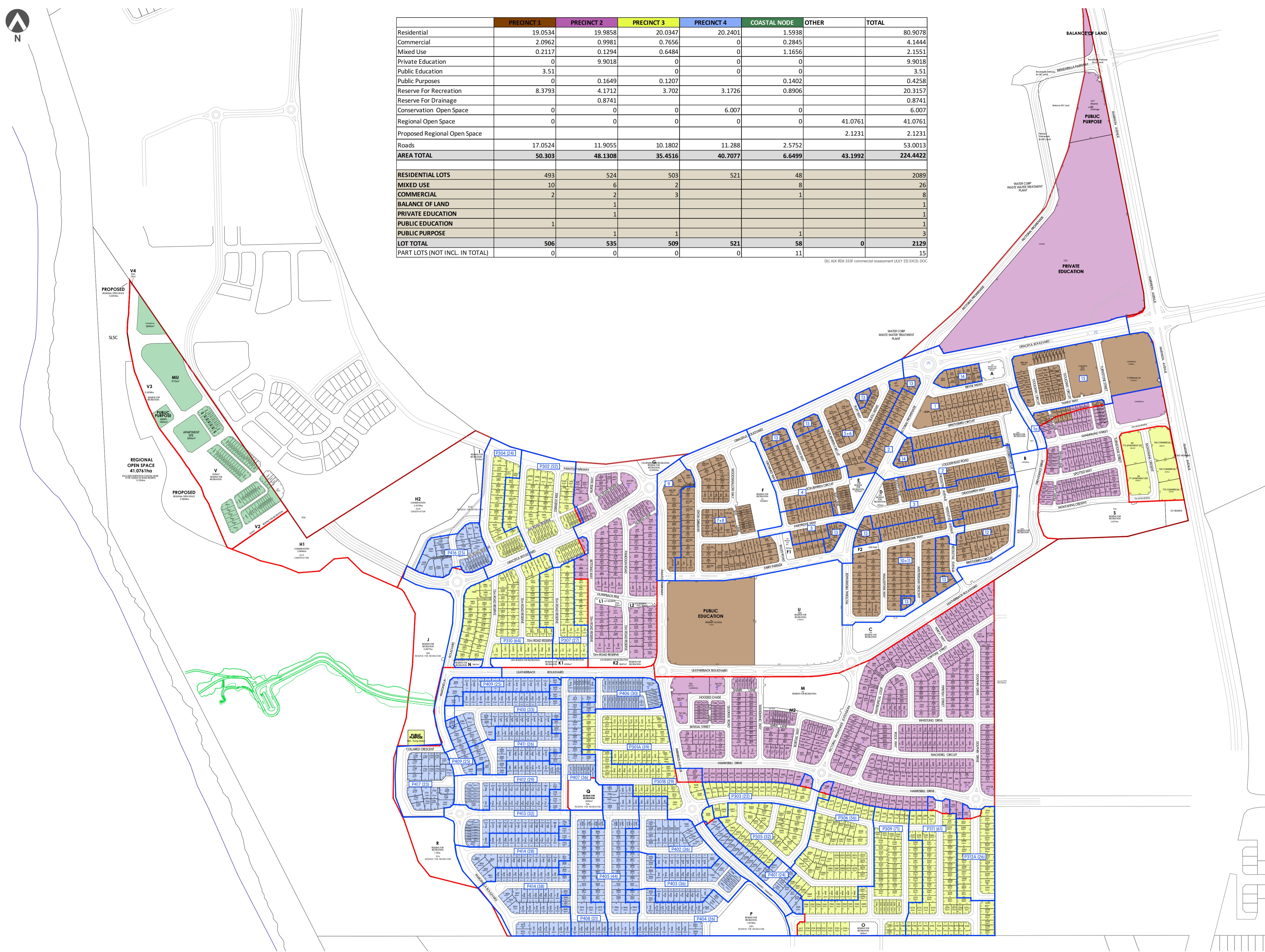
	PRECINCT 1	PRECINCT 2	PRECINCT 3	PRECINCT 4	COASTAL NODE	OTHER	TOTAL
Residential	19.0534	19.9858	20.0347	20.2401	1.5938	0	80.9078
Commercial	2.0962	0.9981	0.7656	0	0.2845	0	4.1444
Mixed Use	0.2117	0.1294	0.6484	0	1.1656	0	2.1551
Private Education	0	9.9018	0	0	0	0	9.9018
Public Education	3.51	0	0	0	0	0	3.51
Public Purposes	0	0.1649	0.1207	0	0.1402	0	0.4258
Reserve For Recreation	8.3793	4.1712	3.702	3.1726	0.8906	0	20.3157
Reserve For Drainage	0	0.8741	0	0	0	0	0.8741
Conservation Open Space	0	0	0	6.007	0	0	6.007
Regional Open Space	0	0	0	0	0	41.0761	41.0761
Proposed Regional Open Space	0	0	0	0	0	2.1231	2.1231
Roads	17.0524	11.9055	10.1802	11.288	2.5752	0	53.0013
<b>AREA TOTAL</b>	<b>50.303</b>	<b>48.1308</b>	<b>35.4516</b>	<b>40.7077</b>	<b>6.6499</b>	<b>43.1992</b>	<b>224.4422</b>
<b>RESIDENTIAL LOTS</b>	<b>493</b>	<b>524</b>	<b>503</b>	<b>521</b>	<b>48</b>	<b>0</b>	<b>2089</b>
<b>MIXED USE</b>	<b>10</b>	<b>6</b>	<b>2</b>	<b>0</b>	<b>8</b>	<b>0</b>	<b>26</b>
<b>COMMERCIAL</b>	<b>2</b>	<b>2</b>	<b>3</b>	<b>0</b>	<b>1</b>	<b>0</b>	<b>8</b>
<b>BALANCE OF LAND</b>	<b>1</b>	<b>0</b>	<b>0</b>	<b>0</b>	<b>0</b>	<b>0</b>	<b>1</b>
<b>PRIVATE EDUCATION</b>	<b>0</b>	<b>1</b>	<b>0</b>	<b>0</b>	<b>0</b>	<b>0</b>	<b>1</b>
<b>PUBLIC EDUCATION</b>	<b>1</b>	<b>0</b>	<b>0</b>	<b>0</b>	<b>0</b>	<b>0</b>	<b>1</b>
<b>PUBLIC PURPOSE</b>	<b>0</b>	<b>1</b>	<b>1</b>	<b>0</b>	<b>1</b>	<b>0</b>	<b>3</b>
<b>LOT TOTAL</b>	<b>506</b>	<b>535</b>	<b>509</b>	<b>521</b>	<b>58</b>	<b>0</b>	<b>2129</b>
<b>PART LOTS (NOT INCL. IN TOTAL)</b>	<b>0</b>	<b>0</b>	<b>0</b>	<b>0</b>	<b>11</b>	<b>0</b>	<b>15</b>

DLX ALK RDs 333F commercial assessment (JULY 22) EXCEL.DOC

POS Ref No.	AREA m <sup>2</sup>	PRECINCT
A	1966	1
B	16054	1
C	8140	1
D	922	1
E	2276	1
F	12658	1
F1	1071	1
F2 PAW	844	1
G	2427	2
I	6563	4
J	24869	3
K1	4230	3
K2	2847	2
L1	796	2
L2	486	2
M	14346	2
M2 PAW	442	2
N	1071	3
O	1819	3
P	12074	4
Q	5051	3
R	13164	4
S	20370	2
U	39862	1
V	4656	4-CNODE
V2	1513	4-CNODE
V3	2658	4-CNODE
V4	79	4-CNODE
<b>203254</b>		

DLX ALK RDs 333C EXCEL.DOC

- LEGEND**
- PRECINCT BOUNDARIES
  - STAGE BOUNDARIES
  - PRECINCT 1
  - PRECINCT 2
  - PRECINCT 3
  - PRECINCT 4
  - COASTAL NODE



SIZE A1  
1:4000  
0 10 20 30 40 50 metres

TRAFFIC ENGINEERING DATA  
SOURCE: C&W - 6016 futurebase.dwg  
Y:\MDD\140812  
L UPDATE STAGING BOUNDARIES 220819 TG RDa  
CADASTRAL INFORMATION  
SOURCE: VERIS  
K UPDATE VERIS PRECAL/CALCULATIONS 220731 SB RDa  
Y:\MDD\210818  
DWG REF: 152015 BA\_alkimos-85-210818  
PROJECTION: PCG94  
M UPDATE STAGING BOUNDARIES 220830 TG RDa  
L UPDATE STAGING BOUNDARIES 220819 TG RDa  
K UPDATE VERIS PRECAL/CALCULATIONS 220731 SB RDa  
I LOTS 4510-4518 MODIFIED 2 REMOVED 200609 SB  
H 4153-4157 MODIFIED 200318 SB DRAFT  
Y:\MDD\DRAWN APPRD

COMMERCIAL ASSESSMENT AND STAGING PLAN (AUGUST 2022)  
Alkimos Beach  
City of Wanneroo

REF NO. DRAW NO. REV.  
DLX ALK RD1 254 M

DISCLAIMER: ISSUED FOR DESIGN INTENT ONLY. ALL AREAS AND DIMENSIONS ARE SUBJECT TO DETAIL DESIGN AND SURVEY

NOTE: NOT TO BE LODGED FOR SUBDIVISION APPROVAL