

Date: 7 December 2022
Your Contact: Graeme Knox
Our Contact: Kieran Richardt
Our Reference: NCO11-0011.2022.124

- Ecological Consulting
- Environmental Planning
- Community Engagement Services
- Environmental Education
- Environmental Project Management
- Ecological Studies & Assessment
- Rehabilitation Planning
- Australian Curriculum Aligned Education Programs
- Incursions & Excursions

Dear Graeme,

RE: Review of Koala Fencing in Precincts 3b and 3c in accordance with EPBC referral requirements of approved Koala Management Plan (KMP)

A current review an update to mapping of installed and planned fencing indicates compliance with the approved Koala Management Plan (KMP) prepared by Austecology (December 2012) in accordance with EPBC Act referral 3013/6791, Attachment E and Attachment F.

This letter provides certification that the Koala fences are generally in accordance with EPBC approval requirements pursuant to Attachment E and F in the approved KMP (December 2012). It is noted that the KMP was finalised prior to detailed design of the P3 development area, with the provision that the proposed boundaries are “subject to detailed engineering design, final survey and approval of subsequent development applications by the relevant authorities”. Figures 1 and 2 show the overall location of fencing, and protocol for fence-installation along open space frontage, to be completed as each development precinct is constructed.

Natura Pacific Pty Ltd
 PO Box 2959, Burleigh BC, QLD
 4220 Gold Coast, Australia
 info@natura-pacific.com
 www.natura-pacific.com
 +(61) 7 5576 5568

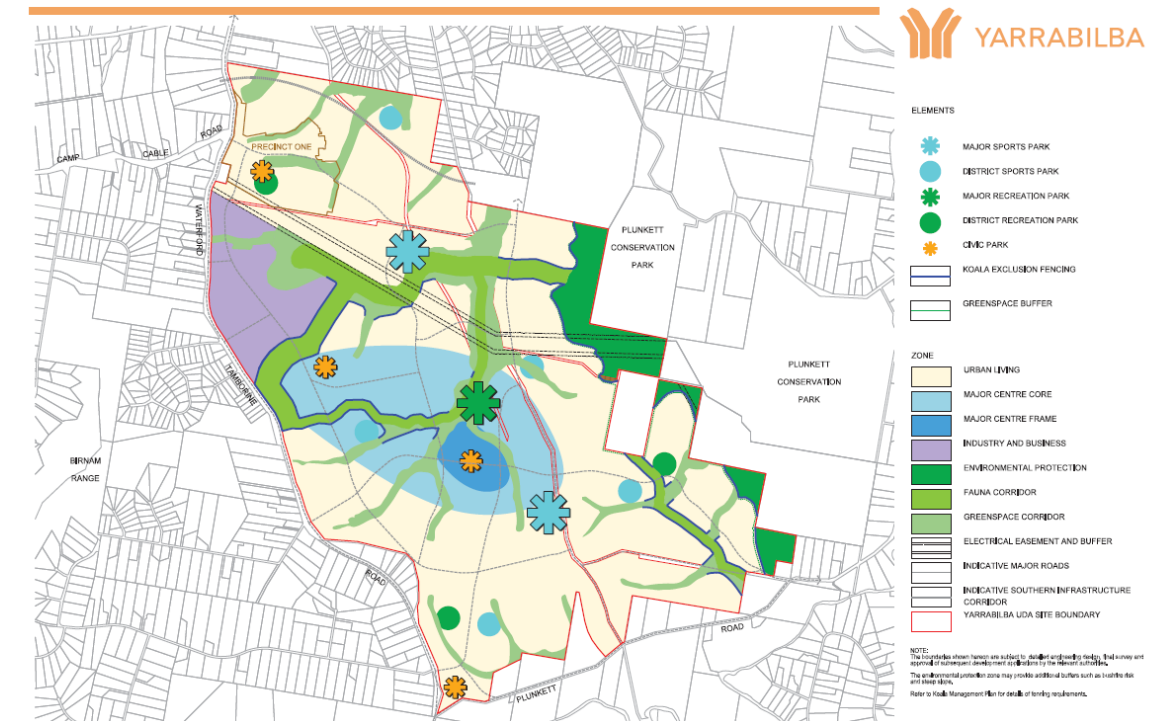


Figure 1: Attachment E of the approved KMP showing required fencing at Yarrabilba Fauna Corridor

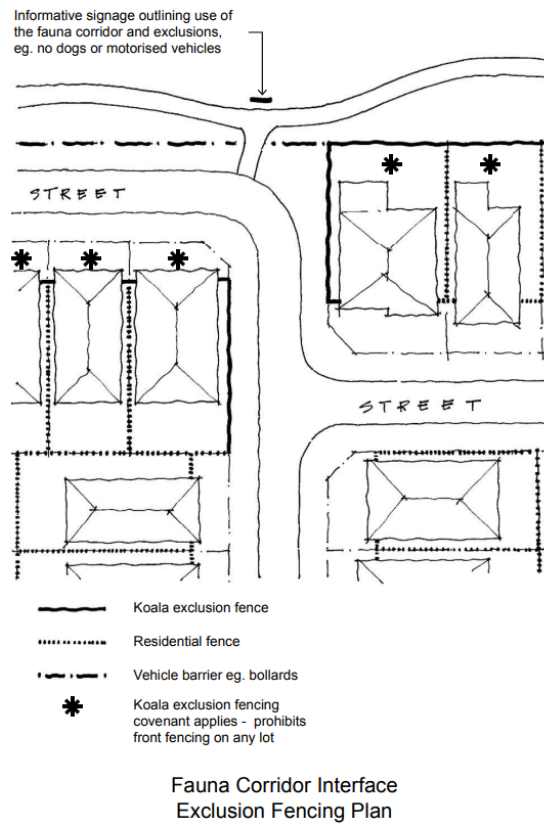


Figure 2: Detail of requirement for non-continuous barrier where park or open space frontage is present, as per Attachment F in the approved KMP

Additional fences have been installed in addition to EPBC approval requirements and the location of these has been mapped as per Figure 3. Further fencing is to be installed as the development progresses. In these instances the design has been drafted, with installation staged to prevent limitations to fauna movement in areas that have not yet been developed.

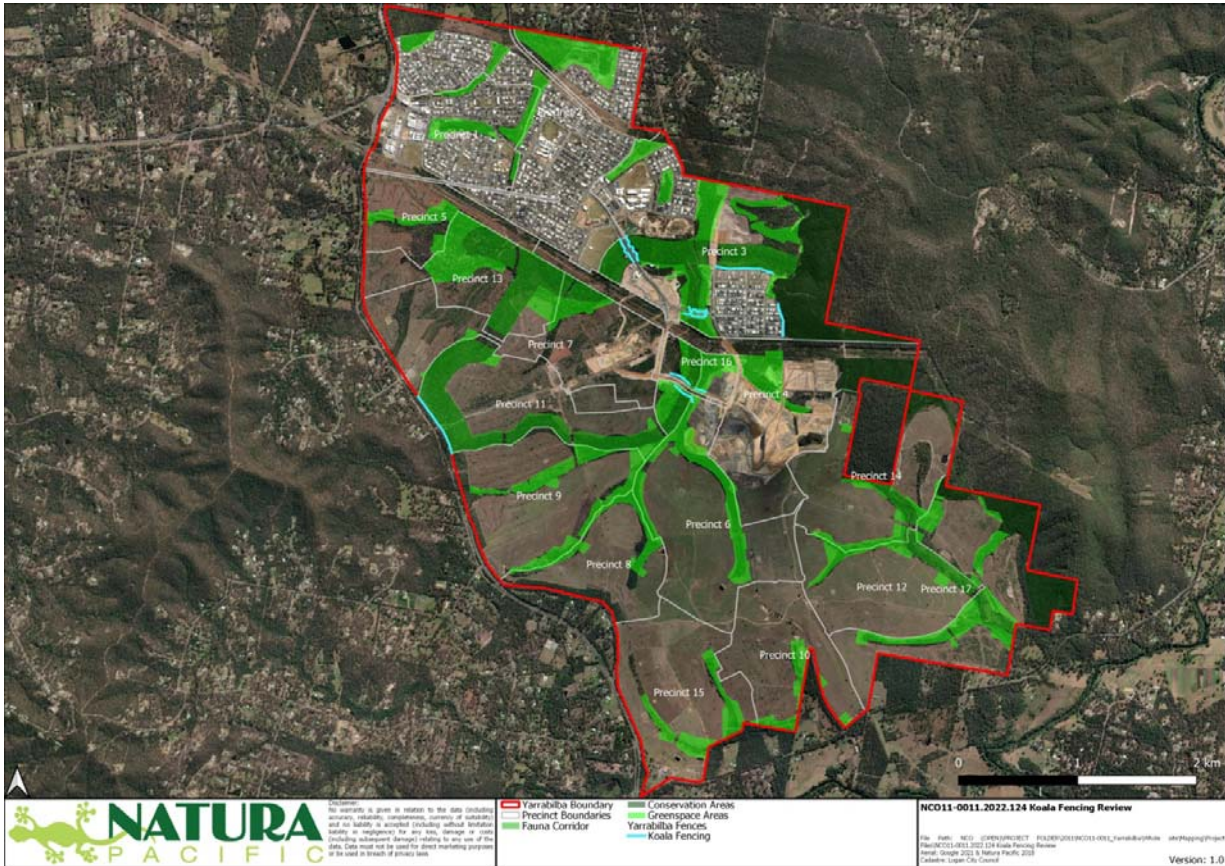


Figure 3: Locations of currently installed koala fencing and additional koala fencing compliant with EPBC conditions and requirements

Thus far, Koala fences have been constructed as wooden fencing, pool fencing or 1.5m black chain mesh with a Colourbond metal collar to prevent Koalas from climbing the fence as per Attachment C in the KMP. As per Attachment F, the fencing is not required to be continuous where there is park or open space frontage, in which case the use of bollards as a vehicle barrier is prescribed. Images of installed Koala fencing in the greater Precinct 3 development area are provided below:





Please feel welcome to contact the undersigned and discuss any of the matters outlined in this letter.

Yours Sincerely,

Kieran Richardt
Director
Natura Pacific Pty Ltd