

Parks and playgrounds



Unleash your inner adventurer



1

Ben Nevis Park
Corner of Dublin Avenue and Barossa Way, Spring Mountain

From an elevated position next to White Rock Spring Mountain Conservation Estate, this park offers stunning views over Spring Mountain. It's a great backdrop for picnics, with easy access to walking and bike trails, BBQ area and playgrounds. The swing was perfectly placed to offer better views the higher you swing!



2

Enchanted Woods Park
Grande Avenue, Spring Mountain

This park is the perfect spot to let the kids' imaginations run wild, as they climb to the top of the castle like a knight rescuing a princess, then walk across the balance-rope bridge while imagining crossing the castle moat. There's even a sword in a stone!



3

Goodwill Park
Grafton Street, Spring Mountain

Goodwill Park in The Crossing, Springfield Rise's newest village, is the perfect place for the kids to have a play and a picnic, while you grab a coffee from Cottonwood Cafe and enjoy time spent watching them in the shaded play area or the beautiful playhouse.



4

Grech Park
Corner of Angelica Avenue and Silvertop Crescent, Spring Mountain

Grech Park connects directly to White Rock Spring Mountain Conservation Estate, and boasts a climbing frame, a basket swing, a slide, a grassy kickabout space, a shelter and picnic table. From here, you can explore the wonderful walking tracks of the conservation estate.



5

Peter Tullett Memorial Park
Woodline Drive, Spring Mountain

This park's playground is inspired by the native satin bowerbird, which decorates its bowers with blue-coloured objects. Features include a shelter with picnic tables and BBQs, a large climbing structure with slide, green shady areas and direct trail access to the conservation estate.



6

The Green Spring Mountain Boulevard,
Spring Mountain

Located just behind Spring Mountain State School, this fun open space has playground equipment for the kids, including a climbing frame and nest swing, a basketball hoop perfect for half-court games, and an undercover area where you can kick back and supervise.



7

Silver Jubilee Park
Russell Luhrs Way, Spring Mountain

Silver Jubilee Park boasts a massive 14.4 hectares of recreational space, including multi-use sporting fields for AFL and cricket, four dedicated basketball courts and two multi-use netball/basketball courts, a kids' adventure playground and a toddlers' play area. Ten local Ipswich athletes are celebrated with signage.



8

Springfield Central Sports Complex
Sportstar Drive, Springfield Central

This 22.5ha sporting complex features eight tennis courts, four multi-purpose sporting fields, two clubhouses, two playgrounds, cricket cages and ample car parking. Six local sporting clubs now call the complex home.



9

Sundown Park
Twilight Drive, Spring Mountain

Sundown Park is a park for all ages, ideal for playdates or family picnics, with features including a green kickabout space, a playground with Tarzan swing, multi-play equipment and a BMX riding track, plus a picnic shelter with drinking fountain and park benches.



10

Mountain Park
Grande Avenue and Sierra Drive, Spring Mountain

This is a great spot for you, your babies and your fur babies, with a spacious dog park complete with agility equipment and a large turf area where pets can run free. Kids can enjoy an adventure playground equipped with climbing walls, slides, swings and a flying fox.

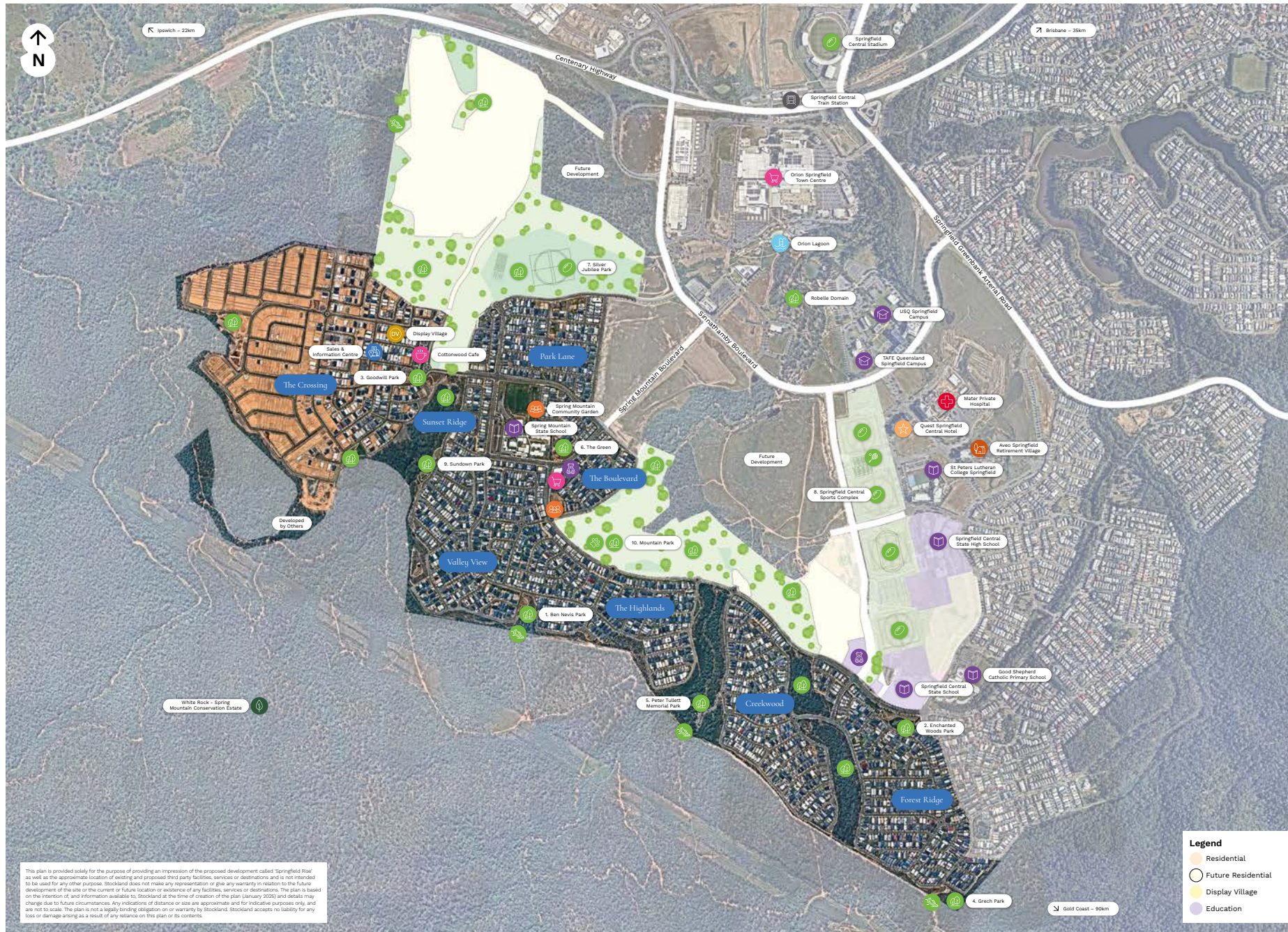


“

Where nature meets community –
come *connect* in the great outdoors.

”





Playgrounds

1. Ben Nevis Park
2. Enchanted Woods Park
3. Goodwill Park
4. Grech Park
5. Peter Tullett Memorial Park
6. The Green
7. Silver Jubilee Park
8. Springfield Central Sports Complex
9. Sundown Park
10. Mountain Park

This plan is provided solely for the purpose of providing an impression of the proposed development called "Springfield Rise" as well as the approximate location of existing and proposed third party facilities, services or destinations and is not intended to be used for any other purpose. Stockland does not make any representation or give any warranty in relation to the future development of the site or the current or future location or existence of any facilities, services or destinations. The plan is based on the intention of, and information available to, Stockland at the time of creation of the plan (January 2025) and details may change due to future circumstances. Any indications of distance or size are approximate and for indicative purposes only, and are not to scale. The plan is not a legally binding obligation on or warranty by Stockland. Stockland accepts no liability for any loss or damage arising as a result of any reliance on this plan or its contents.

**Springfield Rise Sales
& Information Centre**

7001 Victoria Way,
Spring Mountain Qld 4300
stockland.com.au/springfield-rise



This plan is provided solely for the purpose of providing an impression of Stockland Springfield Rise as well as the approximate location of existing and proposed third party facilities, services or destinations and is not intended to be used for any other purpose. Stockland does not make any representation or give any warranty in relation to the future development of the site or the current or future location or existence of any facilities, services or destinations. The plan is based on the intention of, and information available to, Stockland at the time of creation of the plan (January 2025) and details may change due to future circumstances. Any indications of distance or size are approximate and for indicative purposes only, and are not to scale. The plan is not a legally binding obligation on or warranty by Stockland. Stockland accepts no liability for any loss or damage arising as a result of any reliance on this plan or its contents.