

Front Garden Design Package





Contents

Why choose a bespoke Botanica front garden?	4
A comprehensive guide to crafting your designer front garden	5
The Creek – raw stone and native planting	6
The Mountain – evergreen and lush	8
The Country – comfortable and cottage	10
The City – structural and urban	12
The Coast – relaxed and contemporary	14
Botanica front garden package application	16
Terms and conditions	17



Why choose a bespoke Botanica front garden?



Choosing a professionally designed front garden package provides homeowners with a convenient and efficient solution for achieving an attractive outdoor space. Crafted by experts, these packages offer a harmonious blend of aesthetic principles and practical considerations, saving homeowners time and effort.

Predesigned packages are tailored to various preferences, climates and architectural styles, ensuring a visually appealing and well-balanced curb appeal without the complexities of starting from scratch. With carefully selected plants and hardscape elements, homeowners can effortlessly enhance the beauty and functionality of their front gardens.

The packages to choose from are inspired by the botanic styles of climate groups and associated materials, each of these have been crafted to work within the conditions specific to Botanica.

A comprehensive guide to crafting your designer front garden



Step 1: Initiate contact

Once you've finished your home, and it's ready for landscaping, you'll need to email your completed 'Botanica front garden design package' form (located on page 16 of this brochure) to our design team at design@stockland.com.au.



Step 2: Landscape ready

Once the design team has confirmed your eligibility and compliance with our landscaping-readiness requirements, Stockland will engage the contractor to deliver your selected package.



Step 3: Design blossoms into reality

The landscape contractor will contact you directly to arrange a time to deliver your front landscape package.



Step 4: Delivery of your new front garden

The landscape contractor will install your selected landscape package. All communications during the construction and establishment phase will seamlessly flow between the contractor and the owner.



Step 5: Handover of your botanic brilliance

The landscape contractor will arrange the final handover with you. Enjoy your new front garden!

The Creek – raw stone and native planting



Elements

Raw or minimally processed stone and timber.

Inspiration

Mimics the natural beauty of a creekside setting.

Aesthetic

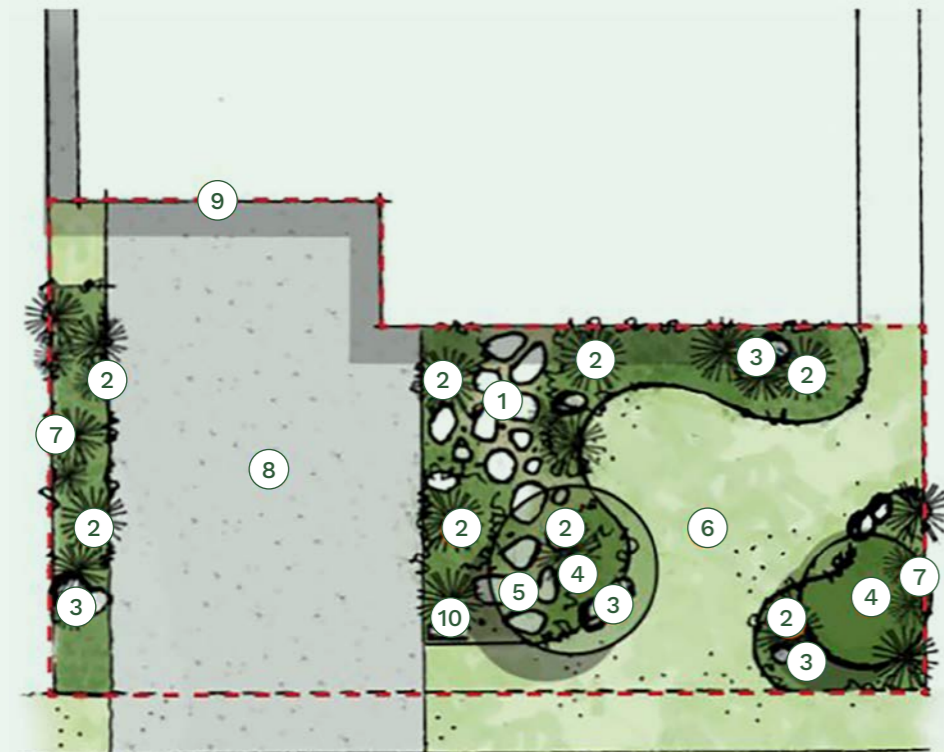
Contemporary Australian, rustic, serene and authentic.

Plantings

Emphasises native plants adapted to the local climate.

Form

Organic arrangement with stones strategically placed for both aesthetic and functional purposes.



Legend

- ① Bluestone steppers
- ② Focal plants
- ③ Sandstone boulders
- ④ Focal trees
- ⑤ Decomposed granite
- ⑥ Wintergreen Couch turf
- ⑦ Screening shrubs

Recommendations

- ⑧ Driveway – delivered by customer
- ⑨ Extent of works line - - - -
- ⑩ Indicative letterbox location – delivered by customer

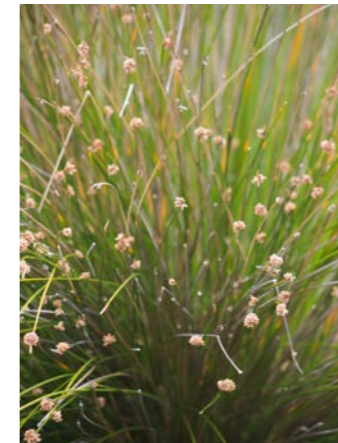
Planting selection

A selection of the following will be included in the front garden design package:

Scientific name	Common name	Scientific name	Common name
Trees		Medium shrubs	
<i>Corymbia ficifolia</i>	Red flowering gum	<i>Diets grandiflora</i>	Fortnight lily
<i>Grevillia baiyleyana</i>	White oak	<i>Westringia fruticosa</i>	Coastal rosemary
<i>Meleluca viridiflora</i>	Broad-leaved paperbark	<i>Grevillia 'Robyn Gordon'</i>	Robyn Gordon
Ground covers		<i>Syzigium australe 'resilience'</i>	Lilly pilly
<i>Ficinia nodosa</i>	Club-rush or knobby club-rush	Focal plants	
<i>Hardenbergia violacea</i>	False sarsaparilla	<i>Banksia robur</i>	Swamp banksia
<i>Chrysocephalum apiculatum</i>	Yellow button	<i>Doryanthes excelsea</i>	Gynea lily
		<i>Crinum pedunculatum</i>	Swamp lily, river lily or mangrove lily



Corymbia ficifolia – Red flowering gum



Ficinia nodosa – Club-rush or knobby club-rush



Westringia fruticosa – Coastal rosemary



Banksia robur – Swamp banksia

Material selection

- Bluestone stepping stone
- Decomposed granite gold
- Corten steel edging
- Sandstone boulders and river rocks
- Wintergreen Couch



Bluestone stepping stone



Decomposed granite gold



Corten steel edging



Sandstone boulders and river rocks



Wintergreen Couch

The Mountain – evergreen and lush



Elements

Evergreen and lush vegetation, creating a rich and vibrant atmosphere.

Inspiration

Draws inspiration from the grandeur of mountainous landscapes.

Aesthetic

Luxuriously green and visually striking.

Planting

Focuses on a variety of evergreen plants, creating a year-round lush appearance.

Form

Linear forms surrounded with large leaf planting.



Legend

- ① Bluestone pavers
- ② Focal plants
- ③ Sandstone boulders
- ④ Tuscan cream pebble strips
- ⑤ Cobble paving edging between turf and plantings
- ⑥ Focal tree
- ⑦ Wintergreen Couch turf
- ⑧ Screening shrubs

Recommendations

- ⑨ Driveway – delivered by customer
- ⑩ Extent of works line - - - - -
- ⑪ Indicative letterbox location – delivered by customer

Planting selection

A selection of the following will be included in the front garden design package:

Scientific name	Common name	Scientific name	Common name
Trees		Medium shrubs	
<i>Syzygium floribunda</i>	Waterhouse floribunda or weeping lilli pilli	<i>Alpinia caerulea</i>	Native ginger or Australian ginger
<i>Tristaniopsis lauriana</i>	Water gum or kanooka	<i>Alpinia nutans</i>	Shellflower or dwarf cardamom
<i>Buckinghamia celsissima</i>	Ivory curl tree	<i>Thaumatococcus xanadu</i>	N/A
<i>Elaeocarpus eumundii</i>	Eumundi quandong or smooth-leaved quandong	<i>Liriope 'evergreen giant'</i>	Evergreen giant
Ground covers		<i>Syzygium 'cascade'</i>	Lilly pilly
<i>Casuarina 'Cousin It'</i>	Cousin It	Focal plants	
<i>Ophiopogon japonicus</i>	Dwarf lilyturf	<i>Cycas revoluta</i>	Sago palm
<i>Myoporum ellipticum</i>	Creeping boobialla or creeping myoporum	<i>Alpinia zerumbet 'variegata'</i>	Shell ginger
<i>Hymenocallis littoralis</i>	Beach spider lily		



Tristaniopsis laurina – Water gum



Casuarina 'Cousin It' – Cousin It



Thaumatococcus xanadu



Alpinia zerumbet 'variegata' – Shell ginger

Material selection

- Bluestone pavers
- Tuscan cream pebbles
- Sandstone boulders and river rocks
- Cobble paving edging
- Wintergreen Couch



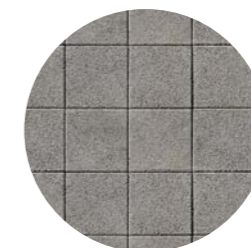
Bluestone pavers



Tuscan cream pebbles



Sandstone boulders and river rocks



Cobble paving edging



Wintergreen Couch

The Country – comfortable and cottage



Elements

Rustic and comfortable, embracing a cottage-inspired design with warm materials.

Aesthetic

Warm and inviting, featuring a blend of rustic elements and cottage-style details.

Form

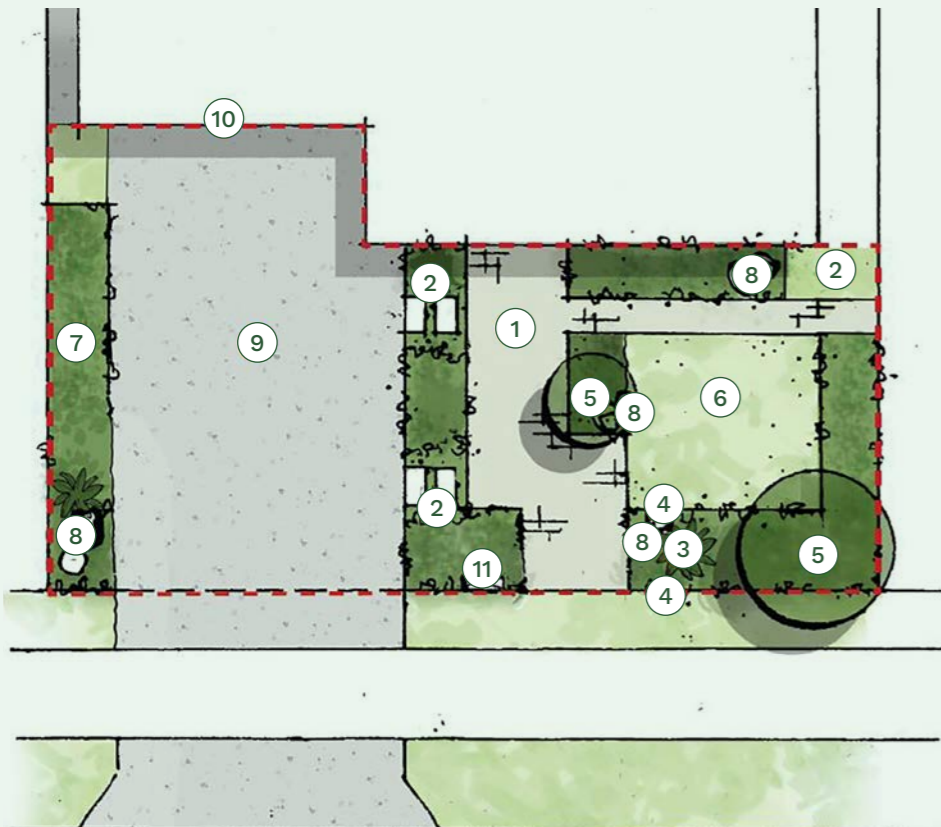
Light-coloured materials with soft vegetation surroundings.

Inspiration

Rooted in the charm and simplicity of country living.

Planting

Cottage garden plants with a mix of wildflowers, herbs and traditional blooms.



Legend

- ① Tavertine paver pathway
- ② Tavertine paver steppers
- ③ Focal plant
- ④ Cobble border paver – Beech
- ⑤ Focal trees
- ⑥ Wintergreen Couch turf
- ⑦ Screening shrubs
- ⑧ Sandstone boulders

Recommendations

- ⑨ Driveway – delivered by customer
- ⑩ Extent of works line - - - - -
- ⑪ Indicative letterbox location – delivered by customer

Planting selection

A selection of the following will be included in the front garden design package:

Scientific name	Common name	Scientific name	Common name
Trees		Medium shrubs	
<i>Lagerstroemia acoma</i>	Crepe myrtle	<i>Dietes grandiflora</i>	Fortnight lily
<i>Magnolia grandiflora</i>	Southern magnolia	<i>Westringia fruticosa</i>	Coastal rosemary
<i>Buckinghamia celsissima</i>	Ivory curl tree	<i>Dianella caerulea</i>	Blue flax-lily
<i>Flindersia australis</i>	Crow's ash	<i>Salvia rosmarinus</i>	Rosemary
Ground covers		Focal plants	
<i>Trachelospermum jasminoides</i>	Star jasmine	<i>Callistemon citrinus</i> 'White Anzac'	Bottlebrush
<i>Tulbaghia violacea</i>	Society garlic, pink agapanthus or wild garlic	<i>Radermachera</i> 'summerscent'	New murraya
<i>Juniperus conferta</i>	Shore juniper	<i>Lepidozamia peroffskyana</i>	Scaly zamia
<i>Scaveola aemula</i>	Fairy fan-flower	<i>Crinum pedunculatum</i>	Swamp lily



Lagerstroemia acoma – Crepe myrtle



Trachelospermum jasminoides – Star Jasmine



Westringia fruticosa – Coastal rosemary



Lepidozamia peroffskyana

Material selection

- Travertine pavers
- Decorative pebbles – Tenterfield Pearl
- Edenstone cobble border paver – Beech
- Sandstone boulders and river rocks
- Wintergreen Couch



Travertine pavers



Decorative pebbles – Tenterfield Pearl



Edenstone cobble border paver – Beech



Sandstone boulders and river rocks



Wintergreen Couch



Elements

Structural forms and angular plantings for a modern and urban aesthetic.

Inspiration

Inspired by sleek and organised forms.

Aesthetic

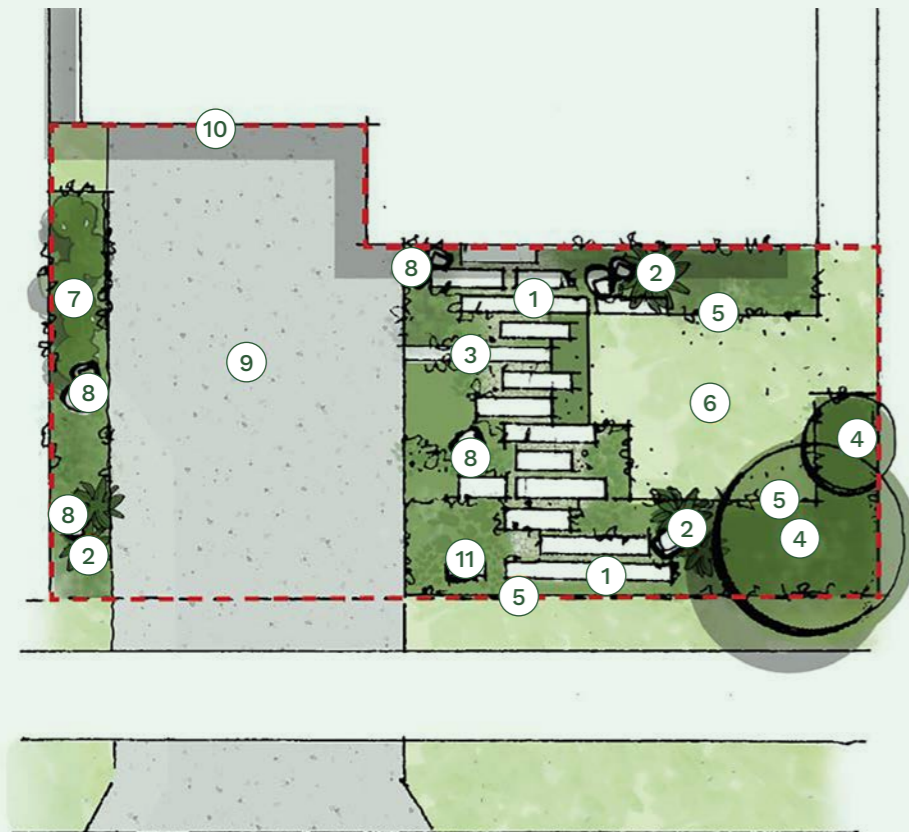
Contemporary, featuring clean lines and geometric patterns.

Planting

Angular arrangements of plants and greenery complementing the structural forms.

Form

Balancing the strong lines with interesting plants.



Legend

- ① Travertine paver steppers
- ② Focal plants
- ③ Decorative Hamptons Grey pebbles filled between steppers mixed into planting
- ④ Focal trees
- ⑤ Cobble border paver between planting and turf
- ⑥ Wintergreen Couch turf
- ⑦ Screening shrub
- ⑧ Sandstone boulders

Recommendations

- ⑨ Driveway – delivered by customer
- ⑩ Extent of works line - - - - -
- ⑪ Indicative letterbox location – delivered by customer

Planting selection

A selection of the following will be included in the front garden design package:

Scientific name	Common name	Scientific name	Common name
Trees		Medium shrubs	
<i>Brachychion acerifolius</i>	Flame bottle tree	<i>Carrissa macrocarpa</i>	Natal plum
<i>Elaeocarpus eumundii</i>	Eumundi quandong or smooth-leaved quandong	<i>Kalanchoe hildebrandtii</i>	Silver spoons
<i>Cupaniopsis anacardioides</i>	Tuckeroo or carrotwood beach tamarind	<i>Thaumatococcus xanadu</i>	N/A
Ground covers		<i>Neomarica gracilis</i>	Walking iris
<i>Casuarina 'Cousin It'</i>	Cousin It	<i>Pittosporum 'Miss Muffet'</i>	Dwarf evergreen shrub
<i>Festuca glauca</i>	Blue fescue	<i>Viburnum odoratissimum</i>	Emerald lustre
<i>Senecio mandraliscae</i>	Blue chalksticks	Focal plants	
		<i>Sansevieria zeylanica</i>	Mother-in-laws tongue
		<i>Zamia furfuracea</i>	Cardboard plant
		<i>Aloe succotrina 'big red'</i>	Big red
		<i>Crassula undulata</i>	Jade plant



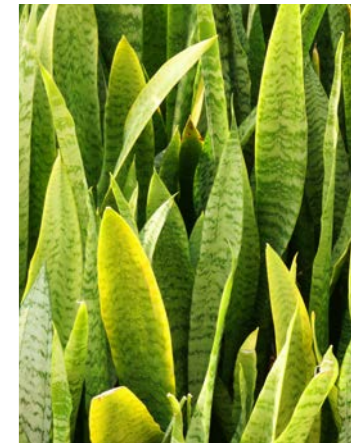
Elaeocarpus eumundii – Eumundi quandong or smooth-leaved quandong



Casuarina 'Cousin It' – Cousin It



Thaumatococcus xanadu



Sansevieria zeylanica – Mother-in-laws tongue

Material selection

- Travertine pavers
- Decorative pebbles – Hamptons Grey
- Edenstone cobble border paver – Charcoal
- Sandstone boulders and river rocks
- Wintergreen Couch



Travertine pavers



Decorative pebbles – Hamptons Grey



Edenstone cobble border paver – Charcoal



Sandstone boulders and river rocks



Wintergreen Couch



Elements

Light raw stone steppers with driftwood edging.

Inspiration

Influenced by the breezy and laid-back atmosphere of coastal environments.

Aesthetic

Contemporary and refreshing, featuring a light colour palette.

Planting

Blue-grey mixed with green vegetation.

Form

Organic, relaxed, light and airy, showcasing a contemporary coastal design.



Legend

- ① Travertine paver steppers
- ② Focal plants
- ③ Sandstone boulders
- ④ Decorative cream pebbles filled between steppers
- ⑤ Steel edging between planting and turf
- ⑥ Wintergreen Couch turf
- ⑦ Focal trees
- ⑧ Screening shrub

Recommendations

- ⑨ Driveway – delivered by customer
- ⑩ Extent of works line - - - - -
- ⑪ Indicative letterbox location – delivered by customer

Planting selection

A selection of the following will be included in the front garden design package:

Scientific name	Common name	Scientific name	Common name
Trees		Medium shrubs	
<i>Banksia integrifolia</i>	Coast banksia	<i>Carrissa macrocarpa</i>	Natal plum
<i>Tristaniopsis lauriana</i>	Water gum or kanooka	<i>Lomandra tankia</i>	Basket grass
<i>Tabebuia palladia</i>	Cuban pink trumpet tree	<i>Kalanchoe hildebrandtii</i>	Silver spoons
Ground covers		<i>Westringia fruticosa</i>	Coastal rosemary
<i>Casuarina 'Cousin It'</i>	Cousin It	<i>Pittosporum</i>	Miss muffet - Dwarf evergreen shrub
<i>Chrysocephalum 'yellow buttons'</i>	Yellow buttons	<i>Grevillia 'yamba sunshine'</i>	Yamba sunshine
<i>Festuca glauca</i>	Blue fescue	Focal plants	
<i>Gazania ridgens 'yellow'</i>	Treasure flower	<i>Doryanthes excelsa</i>	Gymea lily
<i>Senecio mandraliscae</i>	Blue chalksticks		



Banksia integrifolia – Coast banksia



Casuarina 'Cousin It' – Cousin It



Westringia fruticosa – Coastal rosemary



Doryanthes excelsa – Gymea lily

Material selection

- Travertine pavers
- Decorative pebbles – cream
- Corten steel edging
- Sandstone boulders and river rocks
- Wintergreen Couch



Travertine pavers



Decorative pebbles – cream



Corten steel edging



Sandstone boulders and river rocks



Wintergreen Couch



Application for Botanica front garden package

Contact and lot details

First name: _____

Last name: _____

Lot number: _____

Street address: _____

Settlement date: _____

Contact email: _____

Contact number: _____

Handover date: _____

Landscaping-readiness requirements

So that Stockland can confirm you are ready for landscaping, you will be required to submit evidence of the following with your application.

- Image 1 upload – Driveway and crossover completed.
- Image 2 upload – Completed fencing
- Image 3 upload – Hardscapes and retaining completed
- Image 4 upload – Site is free of rubbish
- Upload a copy of your house plans (this will be used for the contractor to understand the layout and dimensions of your lot, such as the location of your driveway)
- By ticking this box I confirm and acknowledge that access can be provided for the purpose of delivering front landscaping and that the details of this form will be shared with the landscape contractor for the purpose of facilitating the landscaping.
- By ticking this box I confirm I have attached all landscaping-readiness requirements to this email.

Once you have completed this form, please provide a copy with your landscape-readiness requirements to design@stockland.com.au.

Terms and conditions

The following terms and conditions are to be read in conjunction with the customer Contract of Sale.

Eligibility

This offer is only available to customers of Stockland where inclusion of landscaping packages is explicitly stated within the Contract of Sale. The customer must comply with the Contract and Sale as well as this document to be eligible for the landscaping package. Third-party contracts are not eligible. Timing as described within this document and the Contract of Sale is a determining factor of eligibility. Stockland reserves the right to not deliver the packages in the event eligibility is not met.

Timing

The customer must submit their required documentation and deemed 'landscape ready' be within three years from settlement to be eligible for the landscaping package.

Packages

The customer may select one of the five packages available in the Front Garden Design Package document. The selected package must apply to the land under the Contract of Sale and not to any other land. Once a package is selected, the customer shall be responsible for any costs arising from any change of selection requested by the customer. The customer may opt not to select any package. The customer acknowledges that they will not be reimbursed if they opt not to select any package.

Contractor engagement

Stockland will engage landscape contractors for the delivery of the landscaping packages. Stockland will pay the contractor directly for the landscaping works that are contemplated within the customer's selected package.

Amendment principles

The customer acknowledges that the landscape design layouts in the packages are indicative only. In order to meet the different size requirements and features of the land, the following design amendment principles are agreed:

- Flipping the design in the package to suit alternating driveway locations is accepted.
- Reasonable amendments to the design, necessary to address build-to-boundary requirements, are accepted.
- The landscape contractor may vary the quantity, type and location of plant placements to suit the garden width or other practical constraints to the land (provided it is in keeping with the intent of the design).

- The landscape contractor may make minor alternations to the design where it is required due to service locations and other practical constraints to the land.
- Resizing the landscape designs for different lot types typically applies to turf dimensions only.
- Variation to the selected landscaping package is discouraged. If the customer requests any plant or material that is not in the selected package, the landscaping contractor may elect at their absolute discretion to decline the request or complete the request at the cost of the customer. The customer acknowledges that requests made by the customer to vary the plants and material are at their own risk and cost. Stockland will not be liable for such costs or anything arising from the variations. The customer must advise Stockland of any requests made for documentation purposes.
- Design amendments may be made to accommodate any requirements as it relates to retaining structures, such as retaining walls, that is delivered by the customer or their builder prior to landscape installation.
- Plant sizes may vary as required.

Any amendments outside the packages and stated principles above will be at the responsibility and cost of the customer. The landscape contractor does not have an obligation to deliver outside of the scope. Any amendments must be discussed and agreed with the landscape contractor.

Extenuating circumstances

Stockland and the landscape contractor reserve the right to vary the package in the event of extenuating circumstances (such as force majeure, outbreaks of plant diseases which prevent the specified plants from being selected, government restrictions etc). In the event these occur, the customer will be notified by Stockland or the landscape contractor.

Definitions

Contract of Sale means the Contract for Houses and Residential Land between the customer as the buyer and Stockland as the seller for land in Stockland's Botanica project.

Settlement means the settlement of the Contract of Sale.

Third-party contract means a contract of sale for land that does not comply strictly with the definition of Contract of Sale.



Contact us

P: 13 52 63

E: botanica@stockland.com.au

stockland.com.au/botanica

stockland.com.au



Scan for website

This brochure is supplied for the purpose of providing an impression of the landscaping options at Stockland Botanica and is not intended to be used for any other purpose. Landscaping is indicative only and may show mature plantings which may not be mature at settlement. The landscaping packages are subject to the terms and conditions contained within this document. Customers must make and rely on their own enquiries and should obtain independent legal and financial advice in making any decision based on the information contained herein. All details, images and statements are based on the intention of, and information available to, Stockland as at the time of publication (October 2024) and may change due to future circumstances. This document is not legally binding on Stockland. Stockland make no representation and does not give any warranty in relation to the information contained in this document. Stockland does not accept any liability for loss or damage arising as a result of any reliance on this document or its contents.
