

Progress summary and next steps

We are here

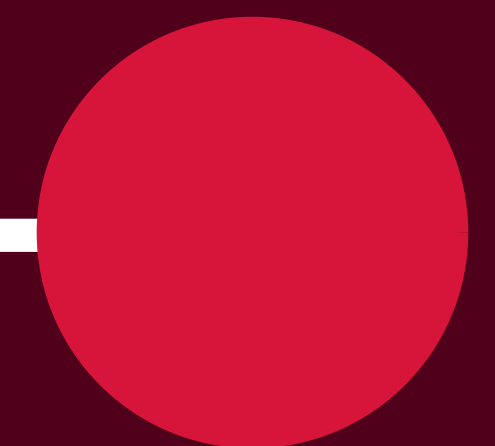
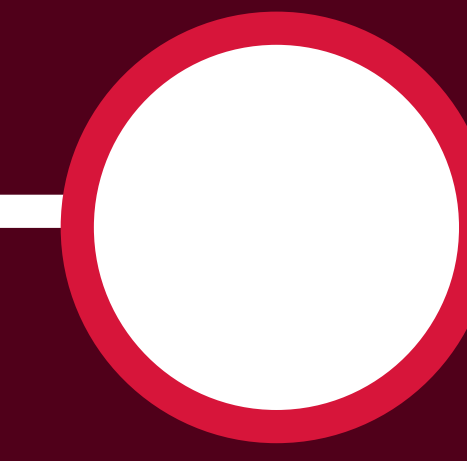
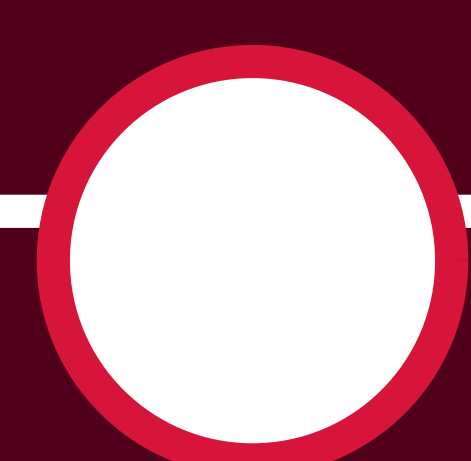
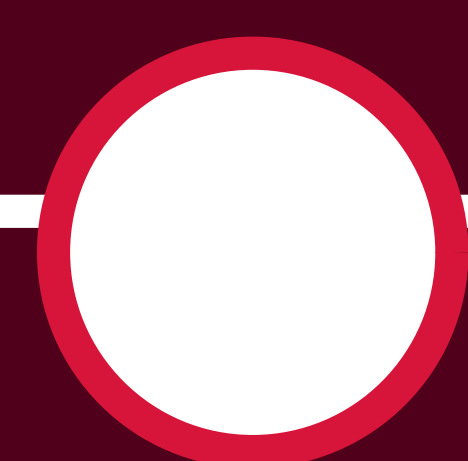
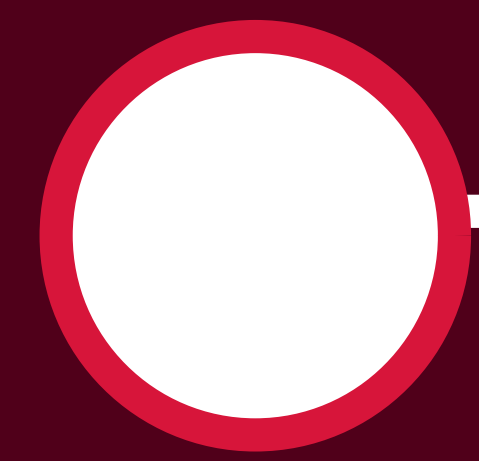
Finalise design, progress planning documents and complete site assessments

Statutory planning application lodged

Building contractor award

Statutory planning approved and construction can begin

School and preschool are handed over



Late 2024

Late 2024

Mid 2025

Mid 2025

Day 1 Term 1 2027

These dates may move depending on factors which may not be within our control, including feedback received and statutory planning approval.

The community will be kept informed as the project progresses.

Gables new primary school and new public preschool

For more information

Phone: 1300 482 651

Email: schoolinfrastructure@det.nsw.edu.au

Website: schoolinfrastructure.nsw.gov.au



How we build schools

When designing new schools or school upgrades, we are guided by the NSW Education Facilities Standards and Guidelines (EFSG). The EFSG are based on years of educational research and engineering expertise.

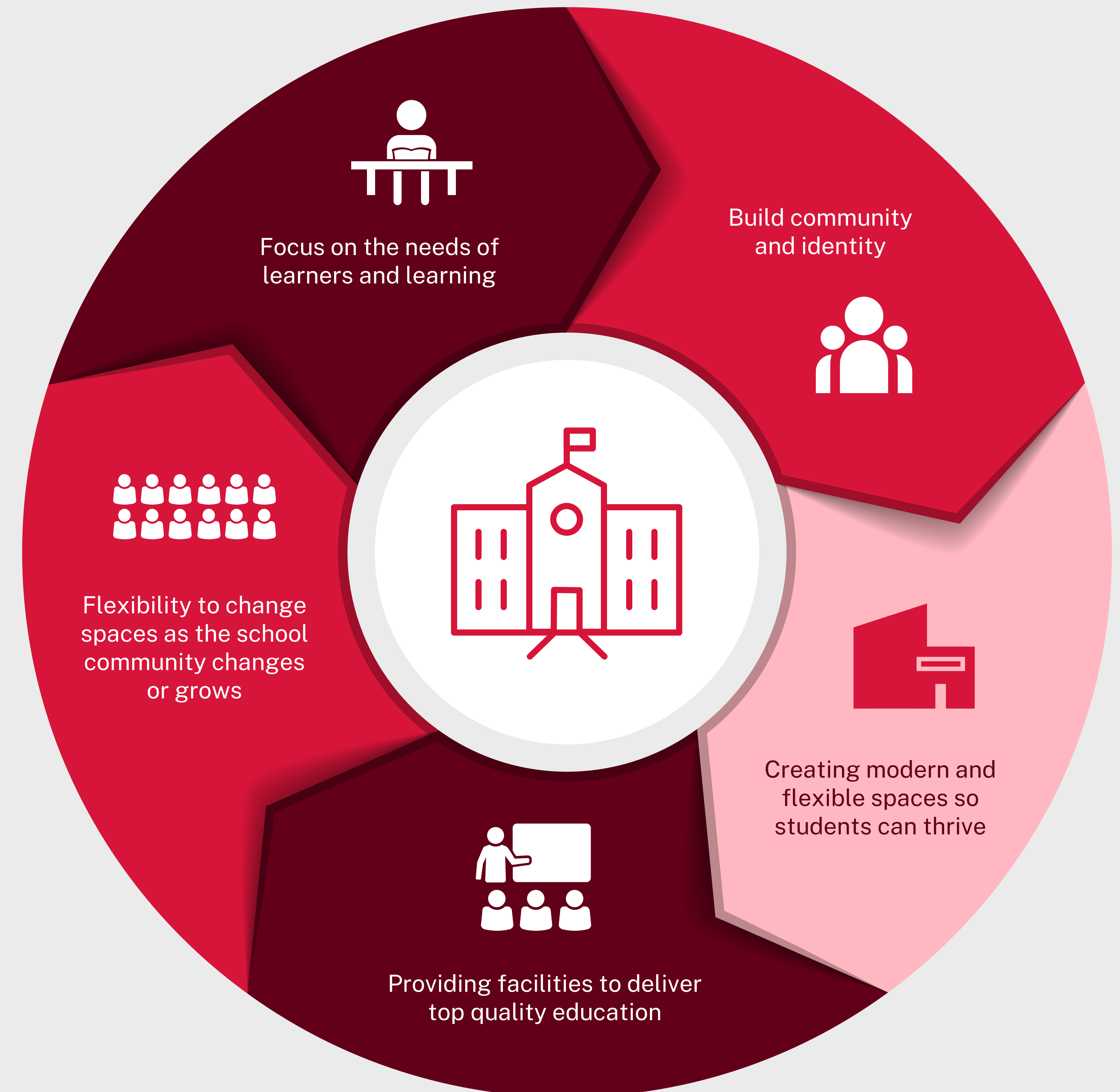
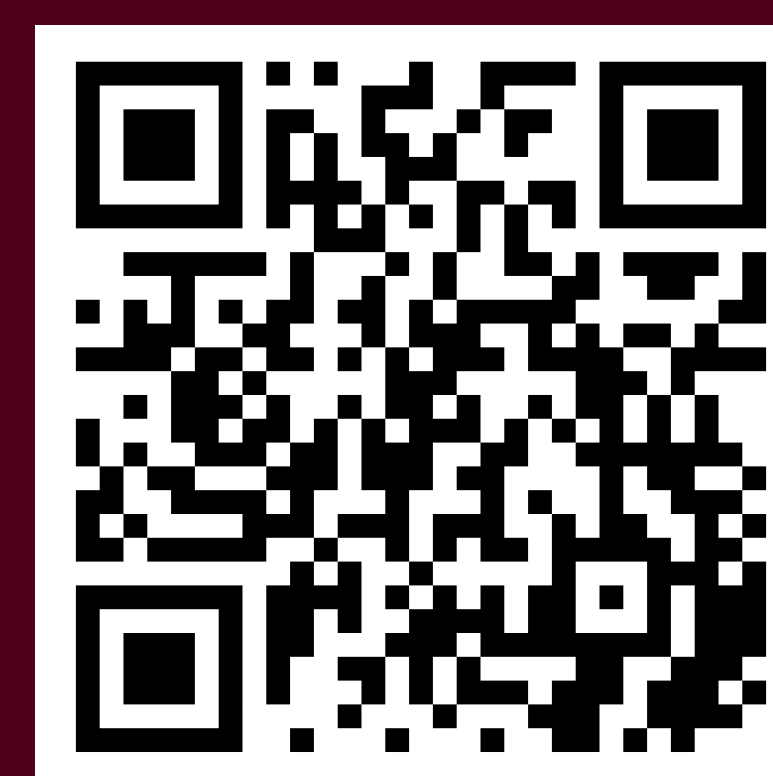
They have been developed to ensure we design and deliver the very best learning environments that support our teachers and meet the learning needs of all our students now and into the future.

These guidelines are essential in delivering more uniform, school designs and quality learning environments that:

- are safe, functional, and adaptable
- meet the learning needs of all our students
- support those with disabilities
- are fit for purpose to deliver the curriculum
- meet and comply with all NSW legal and policy requirements
- use resources sustainably to minimise their impact on the local environment
- deliver value for money and reduce long term maintenance costs.

Learn more

Take a look at some of the upgrades we have delivered and see how these varied spaces support teaching and learning. Visit edu.nsw.link/SchoolShowcase or scan the QR code

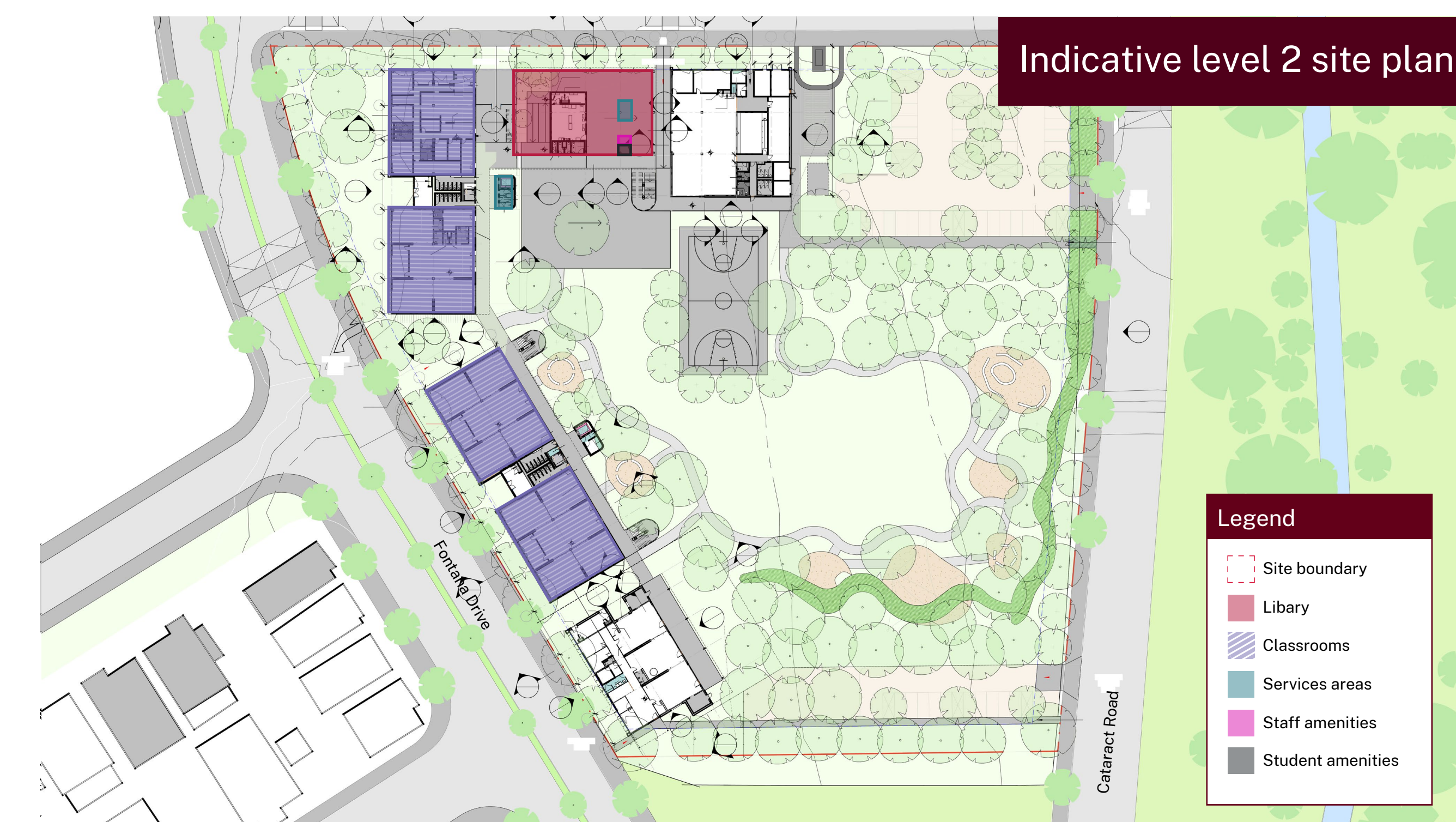
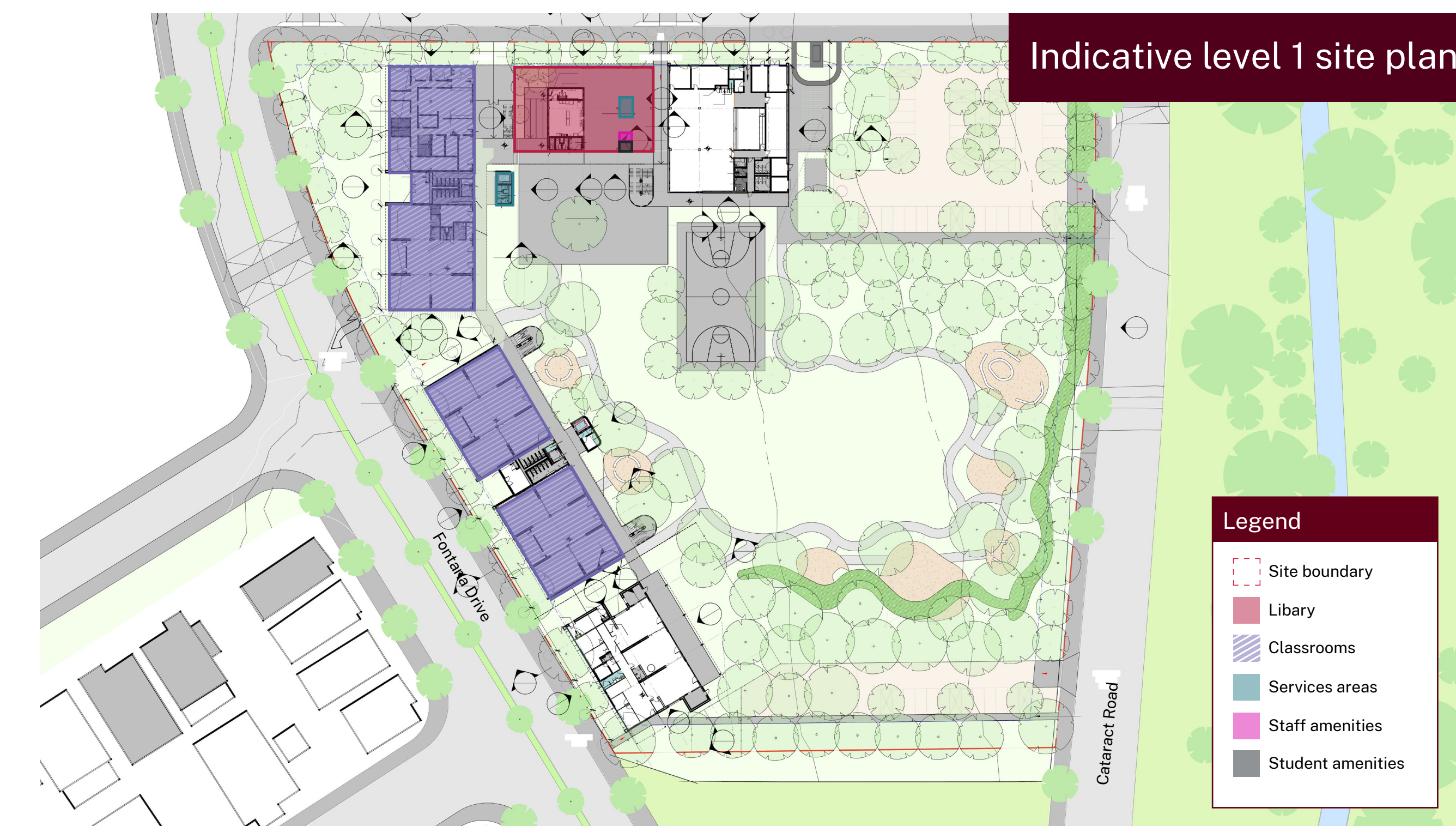


Gables new primary school and new public preschool

For more information
Phone: 1300 482 651
Email: schoolinfrastructure@det.nsw.edu.au
Website: schoolinfrastructure.nsw.gov.au



The proposed design

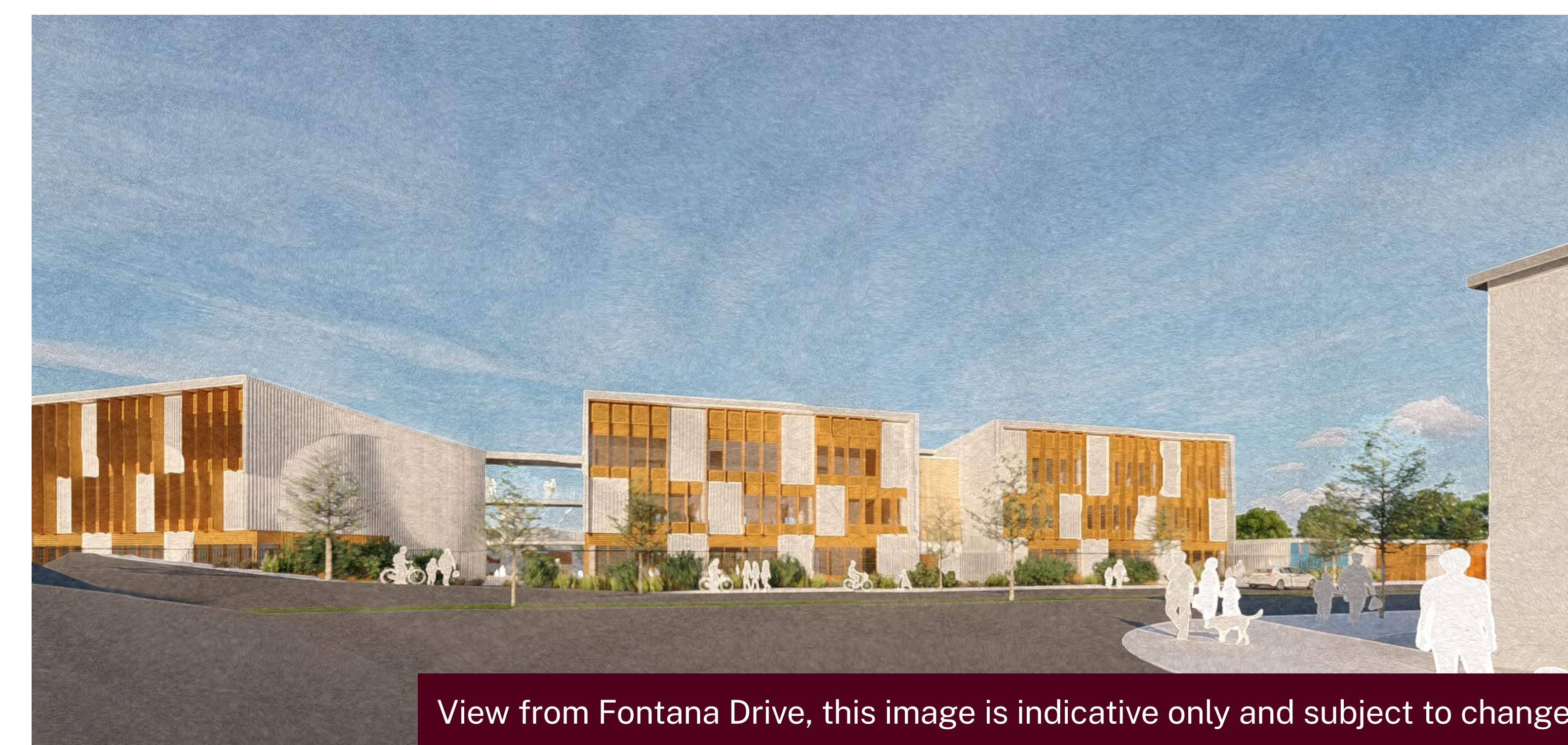


Gables new primary school and new public preschool

For more information
 Phone: 1300 482 651
 Email: schoolinfrastructure@det.nsw.edu.au
 Website: schoolinfrastructure.nsw.gov.au



Artist impressions



Gables new primary school and new public preschool

For more information
Phone: 1300 482 651
Email: schoolinfrastructure@det.nsw.edu.au
Website: schoolinfrastructure.nsw.gov.au

