

Gables new primary school and new public preschool

Information pack – September 2024



Artist impression of the new primary school and public preschool at Gables, view from Pennant Way (Subject to change)

Planning is underway to deliver a new primary school and public preschool in Gables. The school will be located between Fontana Drive and Cataract Road at 1 Pennant Way and will include:

- | | | |
|---|---|---|
|  <p>Classrooms to cater for approximately 1000 students</p> |  <p>Support classrooms</p> |  <p>Amenities</p> |
|  <p>Canteen</p> |  <p>Multipurpose hall and Out Of Hours School Care facilities</p> |  <p>Library</p> |
|  <p>Sports court</p> |  <p>Covered Outdoor Learning Area (COLA)</p> |  <p>Administration and staff facilities</p> |

Preschool for approximately 40 early learners:

- | | | |
|---|---|---|
|  <p>Play rooms</p> |  <p>Outdoor play area</p> |  <p>Amenities</p> |
|---|---|---|



For more information

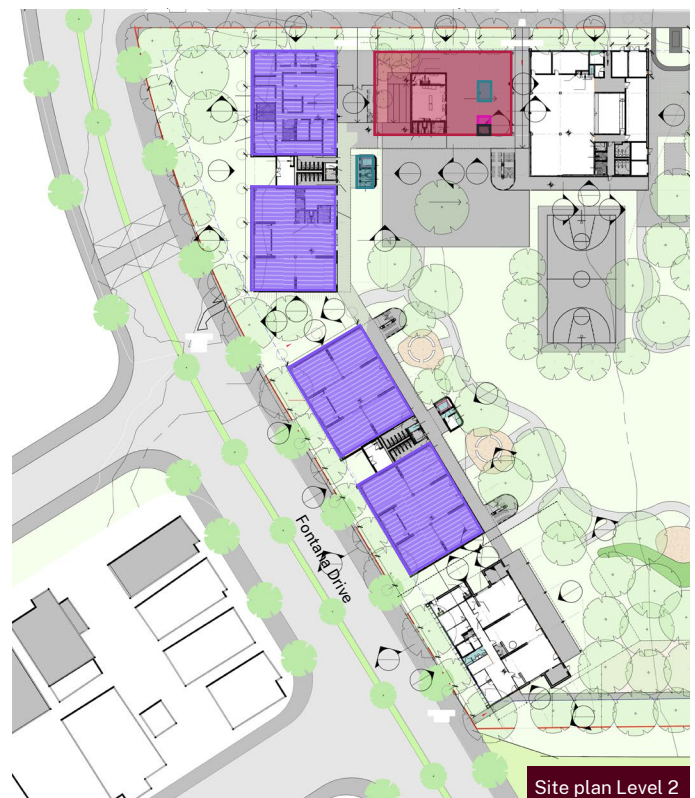
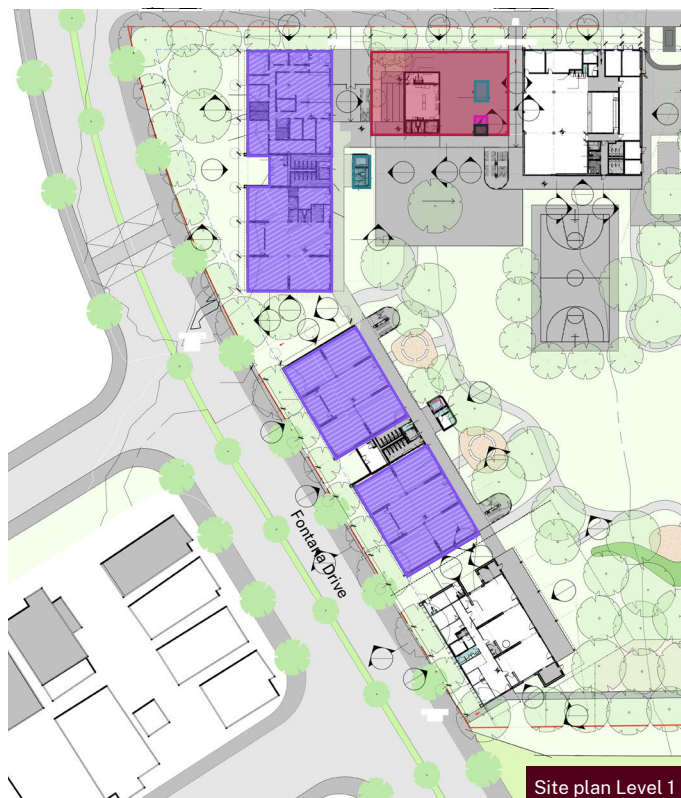
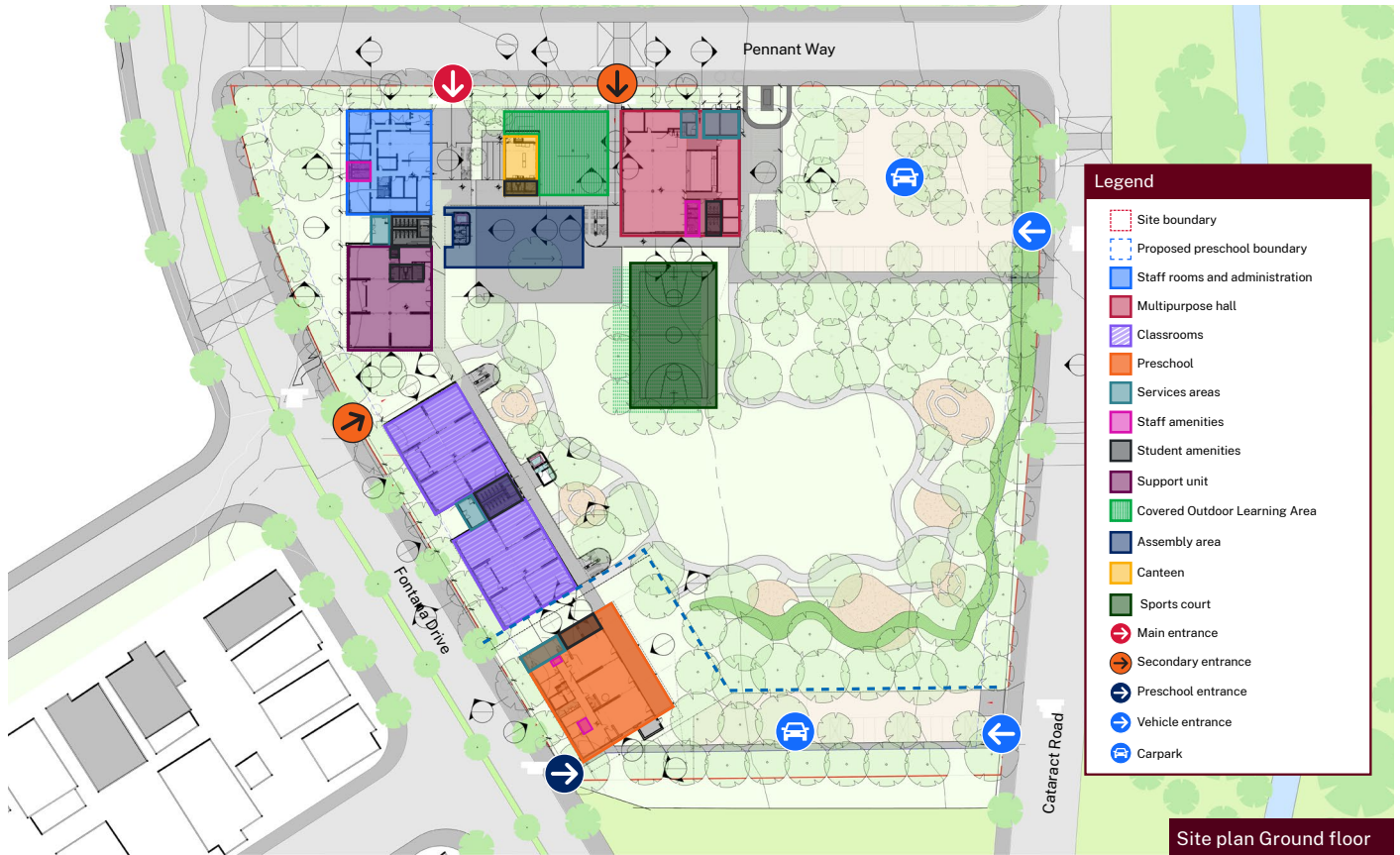
Phone: 1300 482 651
 Email: schoolinfrastructure@det.nsw.edu.au
 Website: schoolinfrastructure.nsw.gov.au



The design

The project is in the design stage which begins to define details within rooms and spaces, furniture, fixtures and equipment (FF&E), detailed building services and structural coordination.

During this stage, we consult with the school representatives to ensure classroom designs and layouts support teaching and learning requirements. The design will continue to evolve and some aspects may change depending on feedback received.



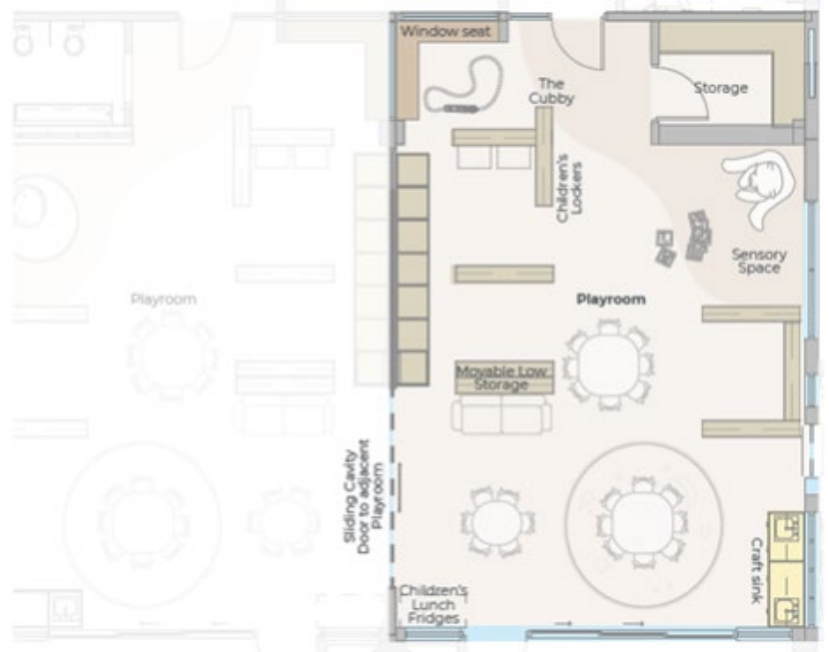
Progress summary and next steps

The design of the new school has continued to evolve, and we have appointed a range of experts including project managers, architects, engineers, and town planners. With these technical experts on board, we will continue to create the documentation required to seek planning approval which will enable us to start construction.

New public preschool

We have adopted a standardised design approach for preschools which has been developed in consultation with educational experts as well as design and engineering specialists. This approach also complies with the National Quality Framework (NQF).

The key design principles for our new public preschool is that they should be welcoming and safe, connected with community and the environment, and inclusive, quality play-based learning environments.



Example playroom layout (indicative only)

Project timeline

We are here

Finalise design, progress planning documentation and complete site assessments

Statutory planning application lodged

Building contractor award

Statutory planning approved and construction can begin

School and preschool are handed over



Late 2024



Late 2024



Mid 2025



Mid 2025



Day 1 Term 1 2027

These dates may move depending on factors which may not be within our control, including feedback received and statutory planning approval.

The community will be kept informed as the project progresses.



Frequently asked questions

When will construction start at the new school?

We expect to begin construction in mid 2025, subject to statutory planning approval.

Will the preschool have a separate entrance?

Yes, the preschool will have a separate vehicle and pedestrian entrance. There will be car parking at the preschool to cater for parents dropping off and picking up their children.

Will there be a bus service for this school?

We are consulting with Transport for NSW (TFNSW), The Hills Shire Council and traffic specialists to help us identify the transport needs for the school. We will provide more information about the transport options for students closer to the school being completed.

When will the intake area for the school be confirmed?

The school enrolment intake area will be confirmed closer to the school opening and will be based on the most up to date demographic data and detailed projections on the number of school aged children living in the local area at the time the school opens.

We will publish the intake area and enrolment information for this project when construction nears completion. In the meantime, 'School Finder' is an online tool for parents to use to locate NSW public schools in your intake area. This can be accessed at education.nsw.gov.au/school-finder.

Contact us

For more information about this project, contact School Infrastructure NSW:

Website: schoolinfrastructure.nsw.gov.au

Email: schoolinfrastructure@det.nsw.edu.au

Phone: 1300 482 651