

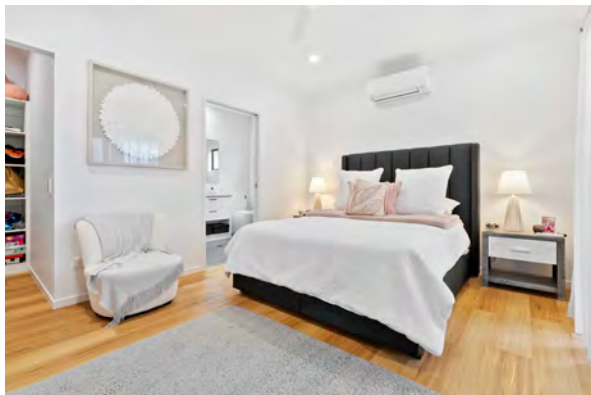


Coastal Retirement

Situated in the exclusive & secure 'Halcyon Nirimba', this sensational home enjoys prime position in this leafy, secure over 50's lifestyle community. Set amid the fabulous Aura Community with easy access to shopping, restaurants, beach and beyond, this property offers retirement living at its finest...

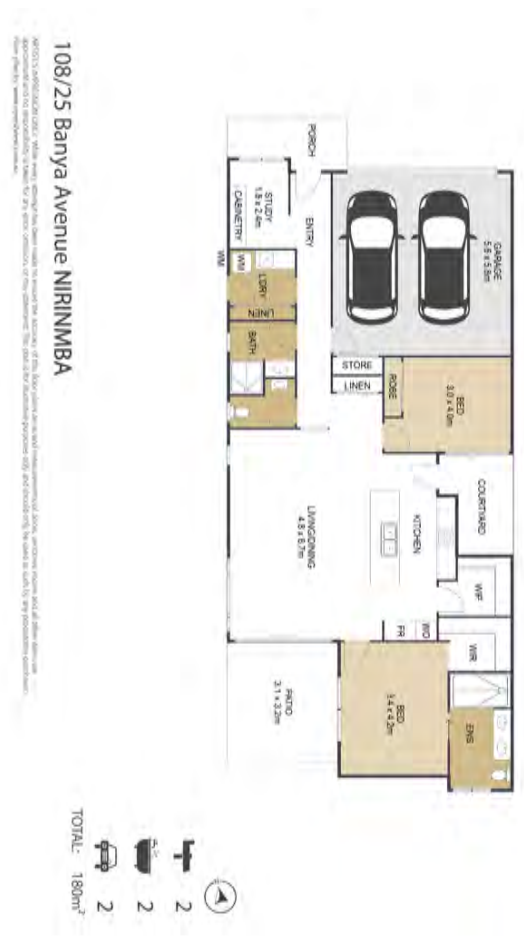
Perfectly located, this immaculate 2 bedroom home has been cleverly designed with the downsizer in mind. With comfort and practicality the brief, this home effortlessly exudes luxury & resort lifestyle. Boasting an open plan design with generous living space that spills to a rear terrace, this exceptional property enjoys the privacy and versatility that good design affords. Tropical planting and low maintenance gardens promise future leafy views from the entertaining terrace and living zones of the home.

With seamless flow through the ample living spaces inside and out, this delightful home offers easy mobility and convenience at its core. Centrally located, the kitchen boasts loads of storage and state of the art stainless steel appliances. With monochromatic values, this predominantly white, stone topped kitchen features black accents and boasts a large centre island and sensational walk in pantry.



Coastal Retirement

- Lovely open plan layout, neutral tones throughout
- Vinyl plank flooring throughout
- Spacious master bedroom, with large walk-in robe and ensuite with double vanities
- Bathrooms tiled to ceiling.
- Kitchen with stone benchtops and Bosch Appliances (Glass cooktop, fitted microwave, electric oven, plumbed in facility for fridge, soft close drawers, integrated Bosch dishwasher)
- Split system aircon in lounge and master bedrooms, fans throughout
- Laundry
- Abundance of storage throughout
- Double garage with epoxy resin flooring and storage cupboard
- 6.6 kw Solar system
- 3000L Outdoor water tank



108/25 Banya Avenue, Nirimba



For Sale

\$850,000

Inspection by appointment



Contact
 Mel Turner
 0409 671 140
 mel.turner@stockland.com.au

Floorplans and elevations are for illustrative purposes only. Whilst all care has been taken in the preparation of the particulars contained herein, no warranty can be given and interested parties must therefore rely on their own enquiries. Note: Drawing is not to scale.