

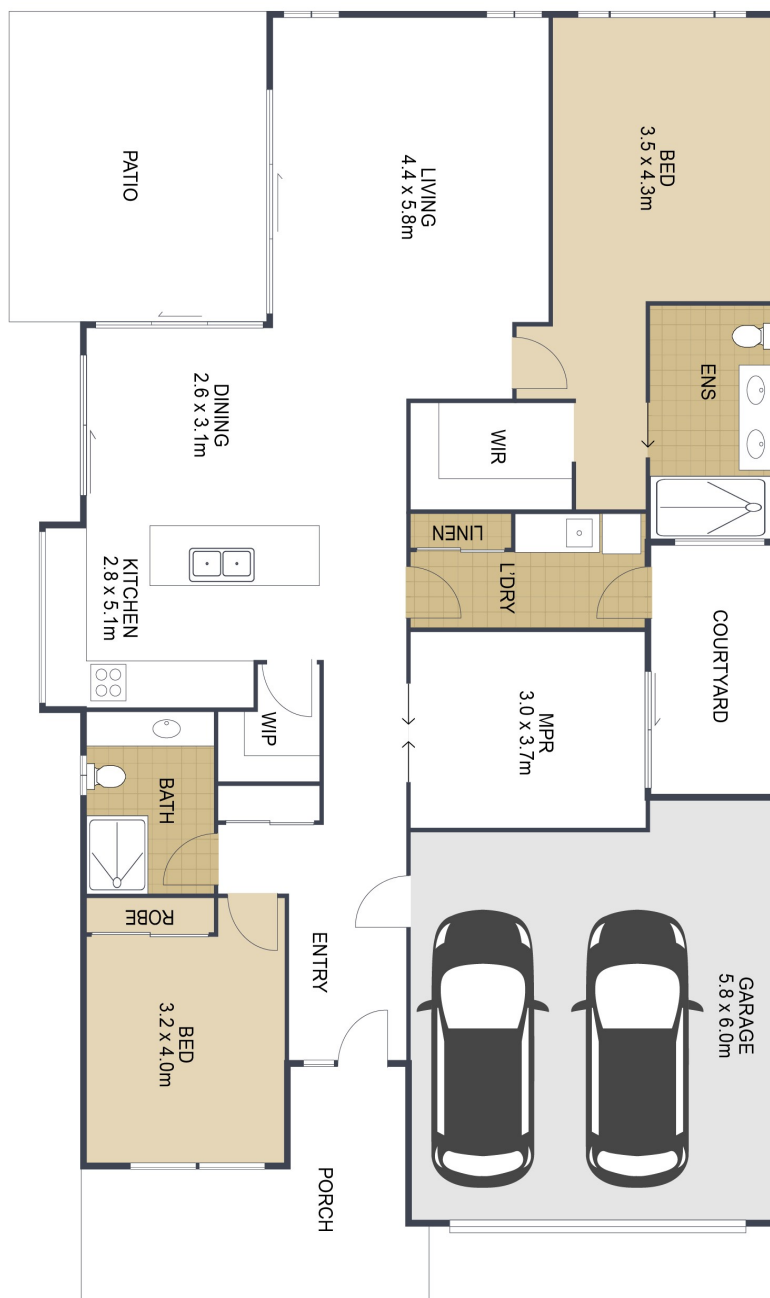


Retire in Style

Awarded Australia's Best Seniors Living 2024 - B by Halcyon is a luxury rainforest retreat set across 59 acres with 5-star recreational facilities and a health and wellness precinct to rival the most exclusive of luxury retreats.

Perfectly presented and with architectural presence, this most coveted of Halcyon's designs is not only contemporary and spacious but boasts a clever and practical floorplan. High ceilings and seamless flow set it apart as one of the most popular of Halcyon's designs. This stunning 2 bedroom home with additional designated media/ multipurpose room has been designed and built to the highest standards and would suit the most fastidious of buyers.

Designed to impress, this open plan home has seamless flow from the spacious living areas to an expansive tiled rear alfresco room through large stacker doors allowing maximum airflow, space and functionality. Situated on a north facing corner site, this home is wrapped in low maintenance tropical gardens and the cool, private alfresco lounge is the perfect retreat complete with two motorized blinds.



Retire in Style

- Contemporary 2 bedroom + MPR
- Oversized corner site with a north facing aspect
- 5.4kw Solar and Solar hot water
- Spacious kitchen with state-of-the-art appliances and large walk-in pantry
- Open plan living at its finest
- Seamless indoor-outdoor flow
- Ducted air conditioning & fans throughout
- Double car garaging

238/2 Retreat Drive, Buderim



For Sale

\$1,275,000

Inspection by appointment



Contact
Narelle Colquhoun
 0432 631 956
 narelle.colquhoun@stockland.com.au

Floorplans and elevations are for illustrative purposes only. Whilst all care has been taken in the preparation of the particulars contained herein, no warranty can be given and interested parties must therefore rely on their own enquiries. Note: Drawing is not to scale.