

Site 43 Halcyon Rise



Embrace the perfect blend of country charm and city convenience



This spacious residence features two generously sized bedrooms, a dedicated study or Multi-Purpose Room, and a large double garage. The master suite boasts a walk-in wardrobe, a private ensuite, and direct access to the patio, while the second bedroom and main bathroom, adorned with floor-to-ceiling feature tiles, deliver both comfort and style. Open-plan living, hybrid timber flooring, kitchen with stone benchtops, premium appliances, and a walk-in pantry.

Tiled entertaining patio, equipped with a ceiling fan and mesh security screen doors. 5.5kW solar system, split-system air conditioning in the living area and master bedroom and laundry with courtyard access and ample storage.



\$820,000

Inspection by appointment

Features of the home:

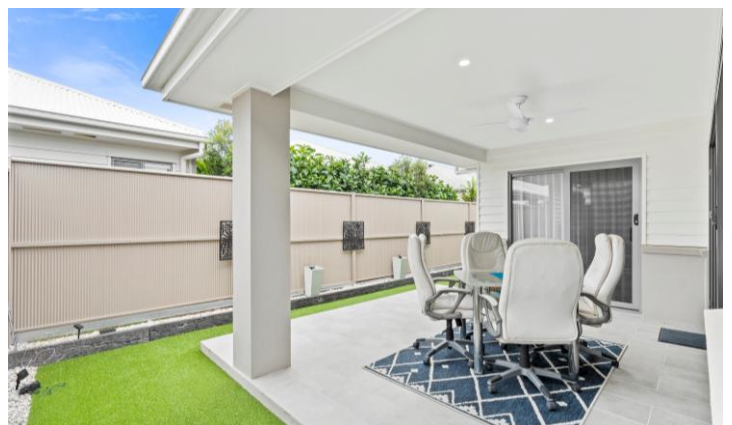
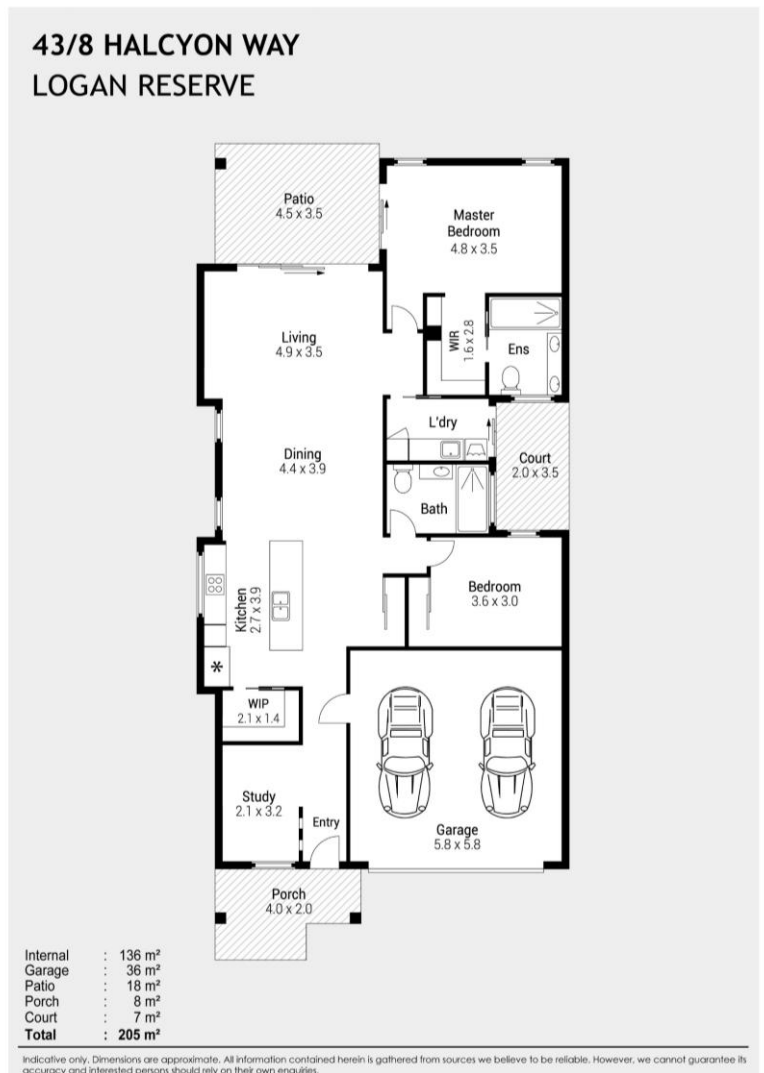
- Two spacious bedrooms plus an MPR/Study
- Master bedroom, walk-in robe and ensuite
- Open-plan living with hybrid timber flooring
- Kitchen with stone benchtops, quality appliances, and walk-in pantry
- Large tiled entertaining patio with ceiling fan
- Split-system air conditioning in living area and master bedroom
- 5kW solar system for energy efficiency
- Spacious double garage with epoxy flooring

Contact

Tracey Wells

0492 179 949

tracey.wells@stockland.com.au



Price correct as at 25 February 2025. Subject to change. Subject to availability. Furniture not included.

Floorplans and elevations are for illustrative purposes only. Whilst all care has been taken in the preparation of the particulars contained herein, no warranty can be given and interested parties must therefore rely on their own enquiries. Correct as at 25 February 2025.