

Find Your Next Chapter in This Beautiful Halcyon Home

Welcome to Site 97 at Halcyon Greens, where country-club living seamlessly integrates with nature. Enter this island oasis to find yourself surrounded by lush wetlands, nature reserve, and an adjoining 18-hole championship golf course. This beautiful home, set on a 300sqm site with a generous 214sqm home and is thoughtfully designed with modern, country-club-inspired style.

This inviting home features two bedrooms plus a multi-purpose room perfect for a hobby room or a home office. The master suite boasts a spacious walk-in robe, an ensuite with double sinks and large shower, and direct private access, via sliding doors, to the rear patio. The second bedroom, with plantation shutters, has sliding door access to the front porch and two-way entry to the main bathroom, perfect for guests.

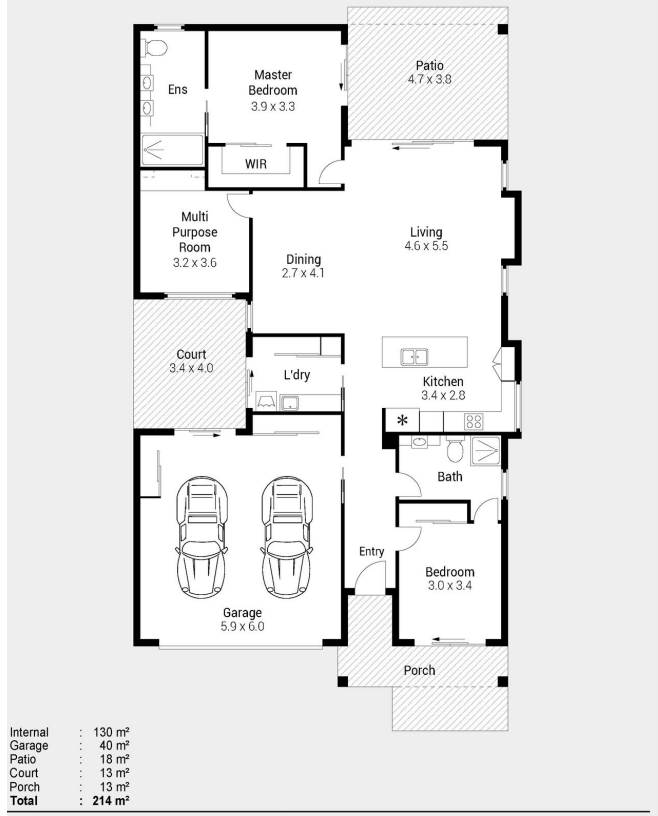
The heart of the home is a spacious living area with 3.9m raked ceilings, split-system air conditioning and feature-height windows. The elegantly defined dining space offers a picturesque view of the low-maintenance rear garden and patio. The expansive kitchen is a chefs delight with a central walk-around island, premium appliances from Asko and Westinghouse, a double pantry and ample storage, with feature window that brings the outdoors in.

Enjoy ease of access and functionality throughout, from the double garage with extensive storage to a dedicated laundry room with linen storage and direct access to a drying court. Additional highlights include an electric privacy screen for the patio and sustainable features like a 5.4 kW solar system. The home is finished with a mix of window treatments, feature-painted walls and grey tiles flowing through the main areas, all designed to provide elegance and comfort at every turn.

Discover the perfect blend of luxury, comfort, and convenience at Site 97, Halcyon Greens. Embrace a refined, active lifestyle at Halcyon Greens, where quality, convenience, and community come together.



97 / 7 HALCYON DRIVE
PIMPAMA



Indicative only. Dimensions are approximate. All information contained herein is gathered from sources we believe to be reliable. However, we cannot guarantee its accuracy and interested persons should rely on their own enquiries.

Features of the Home

- Spacious 214 sqm home on a 300 sqm site
- Two bedrooms, with ensuite to master and guest-accessible main bath
- Expansive kitchen with island bench, Asko and Westinghouse appliances
- Raked ceilings in living area and rear patio for a light, airy feel
- Multi-purpose room with built-in worktop, ideal for a study
- Living area with feature windows and direct access to rear patio
- Double garage with extensive storage and access to drying court
- 5.4 kW solar system with 20 panels
- Low-maintenance gardens and artificial turf for easy care

97/7 Halcyon Drive, Pimpama



For Sale

Offers Over \$990,000

Inspection by appointment



Contact
 Lisa Ashton
 0419 601 760
 lisa.ashton@stockland.com.au

Floorplans and elevations are for illustrative purposes only. Whilst all care has been taken in the preparation of the particulars contained herein, no warranty can be given and interested parties must therefore rely on their own enquiries. Note: Drawing is not to scale.