

# Site 67, Halcyon Greens



## Private & Spacious Retreat in a Secure Community

🛏️ ③ 🚿 ② 🚗 ②



Site 67 at Halcyon Greens is a spacious, modern home in an over-50s lifestyle community. Situated on a 363m<sup>2</sup> corner site, this 235m<sup>2</sup> home provides full walk-around access.

Inside, you'll find three bedrooms, including a main suite with a walk-in robe and ensuite. The living and dining areas open to the rear patio with security screens and electric privacy blinds.

The kitchen features an island bench, walk-in pantry, LED strip lighting, and quality appliances like a Westinghouse wall oven and a Smeg dishwasher. Comfort is ensured with two split-system air conditioners, ceiling fans, and window tinting. Sustainable features include a 5.4kW solar system with 20 panels and Tesla battery storage. The double garage offers potential golf buggy access with the addition of a roller door.

Designed exclusively for over 50s, offering a serene country club lifestyle with modern comforts in a tranquil setting, perfect for active living.

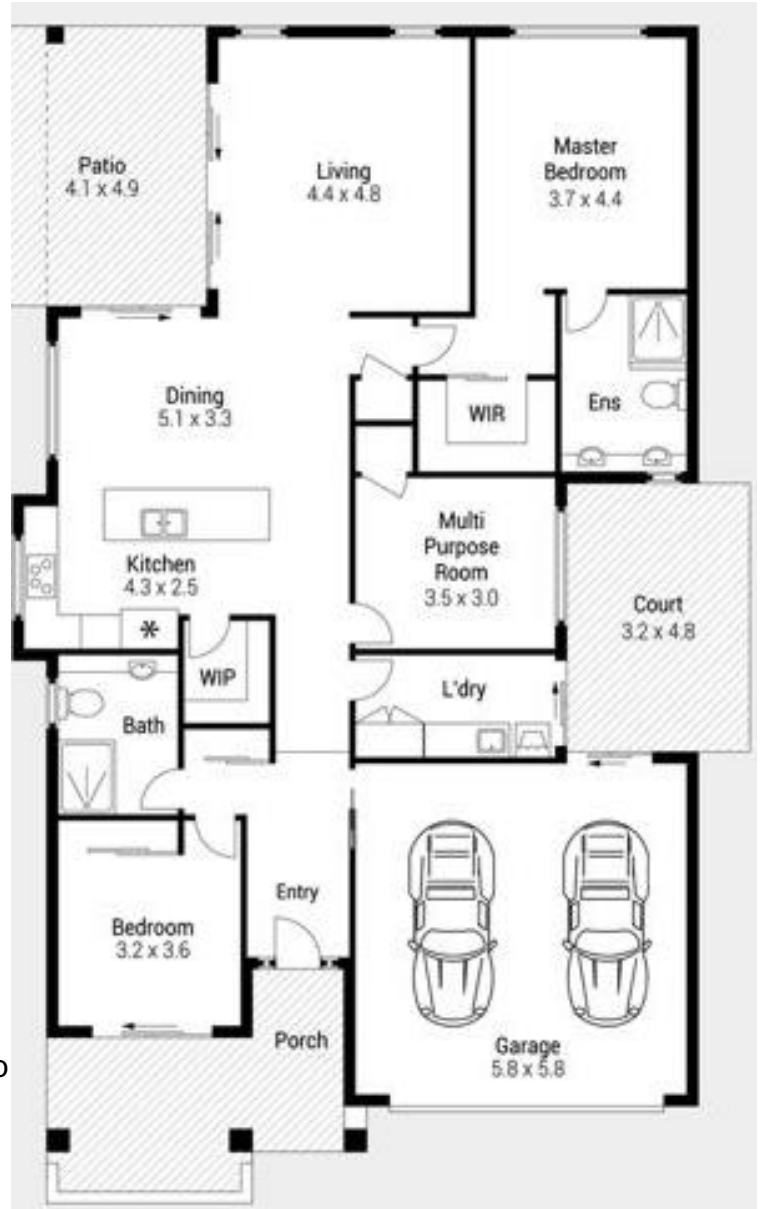


OFFERS OVER \$1,120,000

Inspection by appointment

Features of the home:

- Spacious 363m<sup>2</sup> corner site with full walk-around access
- Three bedrooms & two bathrooms
- Large kitchen with island bench and walk-in pantry
- Open-plan living and dining with seamless patio access
- 5.4kW solar system with 20 panels and Tesla battery storage
- Double garage with internal security door and potential golf buggy access
- Split-system air conditioning and ceiling fans
- Rear patio with electric privacy screens for added comfort



Contact

**Lisa Ashton**

0419 601 760

[lisa.Ashton@stockland.com.au](mailto:lisa.Ashton@stockland.com.au)

Price correct as at 21 February 2025. Subject to change. Subject to availability. Furniture not included.

Floorplans and elevations are for illustrative purposes only. Whilst all care has been taken in the preparation of the particulars contained herein, no warranty can be given and interested parties must therefore rely on their own enquiries. Correct as at February 2025.