

## Spacious, Modern Home in Halcyon's Premier Community

Welcome to 481 in Halcyon Greens, where country club living meets the serenity of nature. This spacious 223 sqm large Sunningdale design home sits on a 322 sqm lot within the exclusive, over-50s Stockland Halcyon Greens community. As you enter, you're greeted by the seamless integration of modern design and natural beauty of the community which is surrounded by wetlands and nature reserves.

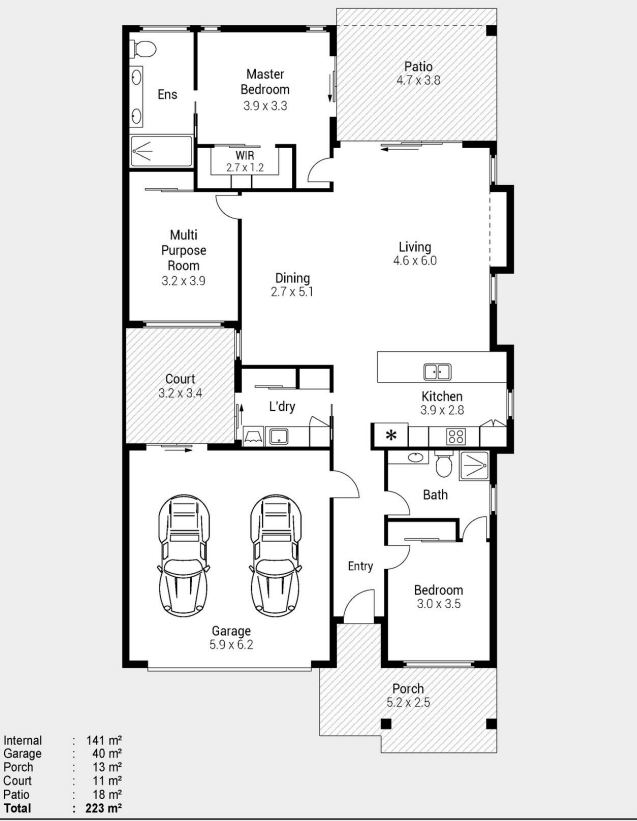
Inside, the home offers a thoughtfully designed layout with two bedrooms, including a master suite complete with a walk-in robe and ensuite with double vanities. The multi-purpose room, located off the dining area, adds flexibility to the space, while the second bedroom offers convenient two way access to the main bathroom; ideal for your guests. The open-plan kitchen, living, and dining areas are perfect for entertaining, with FRANKE appliances and floor-to-ceiling tiles in the bathrooms adding a touch of luxury.

Enjoy year-round comfort with ducted air conditioning, ceiling fans throughout, and upgraded hybrid flooring in the living areas. The home also features abundant storage, a separate laundry with courtyard access, and a double garage. The outdoor spaces are equally impressive, with a large, tiled porch, rear patio, and beautiful native gardens.





481 / 7 HALCYON DRIVE  
PIMPAMA



Indicative only. Dimensions are approximate. All information contained herein is gathered from sources we believe to be reliable. However, we cannot guarantee its accuracy and interested persons should rely on their own enquiries.

### Spacious, Modern Home in Halcyon's

- Spacious 223 sqm home on a 322 sqm lot
- Two bedrooms plus a versatile multi-purpose room
- Master bedroom with walk-in robe and double vanity ensuite
- Open-plan kitchen, living, and dining areas with FRANKE appliances
- Ducted air conditioning, ceiling fans, and hybrid flooring throughout
- 5.18kw solar inverter and 10kw Daikin reverse cycle ducting with 4 zones
- Large tiled porch and rear patio with two electric privacy screens
- Beautifully maintained native gardens in front and rear
- Security screens on all doors and windows (except garage patio sliding door)
- Excellent access to resort-style facilities in Halcyon Greens community

481/7 Halcyon Drive, Pimpama



For Sale

Offers Over \$1,050,000

Inspection by appointment



Contact  
 Lisa Ashton  
 0419 601 760  
 lisa.ashton@stockland.com.au

Floorplans and elevations are for illustrative purposes only. Whilst all care has been taken in the preparation of the particulars contained herein, no warranty can be given and interested parties must therefore rely on their own enquiries. Note: Drawing is not to scale.