

Contemporary Home with Country Club Appeal

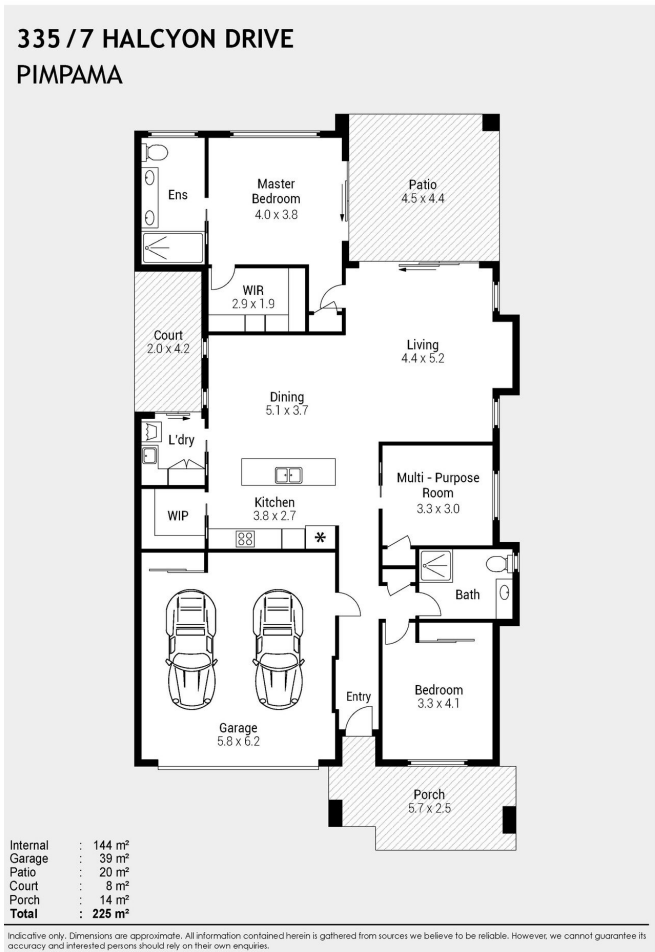
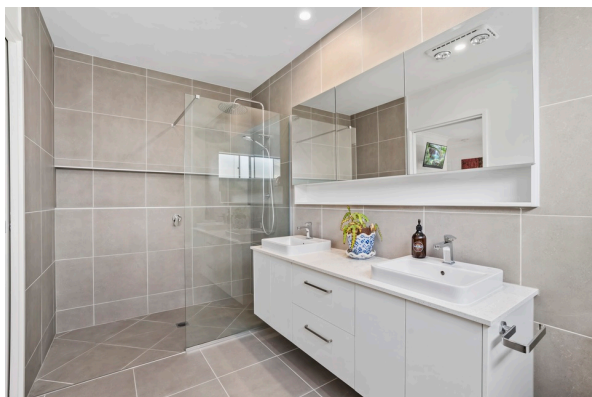
Welcome to 355 at Halcyon Greens, where country club living meets modern design in the heart of nature. This property offers a tranquil retreat and specifically designed for those over 50. Halcyon Greens embodies a new way of living, offering a community focused on comfort, style, and luxury.

This spacious home, set on a 300 sqm site with a house size of 225 sqm, features a large double garage and offers two bedrooms along with a versatile multi-purpose room, ideal for various uses. The multi-purpose room, located just off the kitchen, is fitted with double pocket doors, adding flexibility to the layout. The open-plan kitchen, living, and dining areas are bathed in natural light, enhanced by impressive 3.9-meter rake ceilings. The kitchen includes a walk-in pantry with shelving, an island bench, and high-quality Franke cooking appliances, along with a SMEG dishwasher.

The main bedroom boasts a large walk-in robe and an ensuite with twin vanities and a spacious shower, while the second bedroom and multi-purpose room feature soft carpet flooring for added comfort. Hybrid flooring runs throughout the living spaces and main bedroom, combining durability with a modern aesthetic. The home is equipped with a 7.1kW split system air conditioner in the living area and ceiling fans throughout for year-round comfort. A 5kW solar system helps keep energy costs low.

Outdoor living is a highlight, with a rear patio with a remote shade blind and ceiling fan, perfect for relaxing, and a private tiled courtyard accessible from the laundry. The established gardens add to the serenity of this beautiful home. Additional features include a crim-safe front door screen, rear patio doors from both the living area and main bedroom, and a separate laundry with ample storage. The double garage includes a convenient storage cupboard for extra space.

Don't miss the opportunity to experience the perfect blend of luxury, comfort, and nature at Site 355, Halcyon Greens. This beautifully designed home offers everything you need for a relaxed, yet sophisticated lifestyle.



Features of the home

- 300 sqm site with 225 sqm home
- Large double garage with storage cupboard
- Two bedrooms plus a multi-purpose room
- Open-plan kitchen, living, and dining with 3.9m rake ceilings
- Ensuite with twin vanities and large shower in main bedroom
- Kitchen with island bench, walk-in pantry, and Franke appliances
- 7.1kW split system air conditioning and ceiling fans throughout
- 5kW solar system for energy efficiency
- Private tiled courtyard and rear patio with remote shade blind
- Crim-safe front door screen and patio doors, established gardens

335/7 Halcyon Drive, Pimpama



For Sale

Offers Over \$1,100,000

Inspection by appointment



Contact
 Lisa Ashton
 0419 601 760
 lisa.ashton@stockland.com.au

Floorplans and elevations are for illustrative purposes only. Whilst all care has been taken in the preparation of the particulars contained herein, no warranty can be given and interested parties must therefore rely on their own enquiries. Note: Drawing is not to scale.