

Sophisticated Living in a Dynamic Community

Step into the epitome of relaxed, country-club-inspired living at Site 231, Halcyon Greens. This remarkable home offers an unparalleled lifestyle within a vibrant over-50s community, where pristine wetlands, lush nature reserves, and a championship 18-hole golf course are just steps away.

Located on a spacious 355m² corner site, this 224m² home features a grand 1200mm front door and high-quality finishes. Enjoy open-plan living with a striking 3.7m skillion roofline, ducted air conditioning, and security screens on both patios. The home includes two comfortable bedrooms: a main bedroom with a luxurious ensuite and a large walk-in robe. The second bedroom adjacent to the main bathroom for added convenience. There's also a versatile multi-purpose room, ideal for hobbies or a home office.

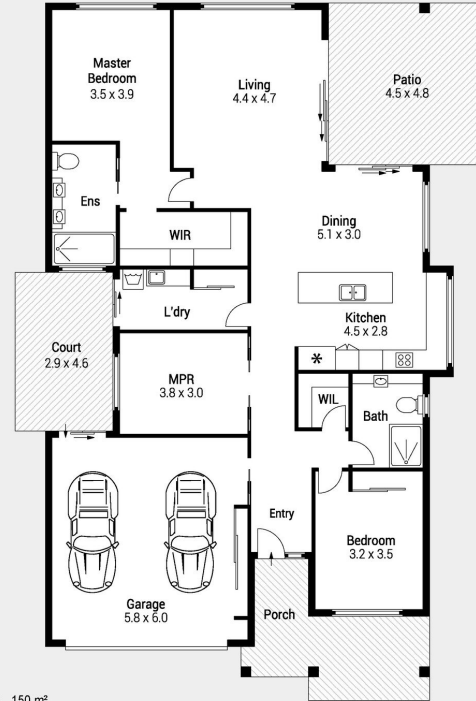
The heart of the home is its beautifully crafted L-shaped kitchen, complete with shaker-style cabinetry, a 2 Pac finish, an extended island bench, and premium AEG appliances and a Miele dishwasher. Outdoor living is seamless with front and rear patios, privacy screens, and a double garage with custom storage. Energy-efficient features include a 5kW solar inverter and 12 panels.

For those who cherish outdoor living, the property offers both front and rear patios, each fitted with privacy screens for a seamless blend of indoor and outdoor comfort. The garage, with ample storage along the internal wall, caters to active lifestyles, while the eco-conscious 5kW solar inverter with 12 panels ensures sustainable living.

Experience modern, refined living at Halcyon Greens. Embrace a lifestyle of comfort and elegance at Site 231, surrounded by lush landscapes and resort-style amenities.



231/7 HALCYON DRIVE
PIMPAMA



Internal	: 150 m ²
Garage	: 37 m ²
Patio	: 15 m ²
Porch	: 13 m ²
Court	: 9 m ²
Total	: 224 m²

Indicative only. Dimensions are approximate. All information contained herein is gathered from sources we believe to be reliable. However, we cannot guarantee its accuracy and interested persons should rely on their own enquiries.

Features of the Home

- Spacious 355m² corner site with full walk-around access
- 224m² home featuring two bedrooms plus a multi-purpose room
- Main bedroom at rear with large walk-in shower ensuite
- Elevated 3.7m skillion roofline with feature window in living area
- Stylish L-shaped kitchen with extended island and shaker-style cabinetry
- High-quality AEG appliances and Miele dishwasher in kitchen
- Ducted air conditioning and carpeted bedrooms and multi-purpose room
- Privacy screens on both front and rear patios
- 5kw solar inverter with 12 panels for energy efficiency
- Double garage with internal storage

231/7 Halcyon Drive, Pimpama



For Sale

Offers Over \$1,125,000

Inspection by appointment



Contact
 Andrew McGlone
 0436 668 173
 amcglone@halcyondays.com.au

Floorplans and elevations are for illustrative purposes only. Whilst all care has been taken in the preparation of the particulars contained herein, no warranty can be given and interested parties must therefore rely on their own enquiries. Note: Drawing is not to scale.