



The Perfect Blend of Comfort and Style

Designed exclusively for over 50s, this serene country club lifestyle offers modern comforts in a tranquil setting. Nestled within Halcyon Greens, the home is surrounded by picturesque greenery, Site 195 is perfectly positioned with no direct neighbour across the road and close to the community's amenities.

This spacious 217m² home sits on a 294m² site and features two generous bedrooms, plus a MPR or third bedroom with an inviting open plan layout. The main bedroom includes a walk-in robe, split system air conditioning, and a large ensuite with double sinks and ample storage. For added convenience, the second bedroom provides sliding door access to the front porch and privacy.

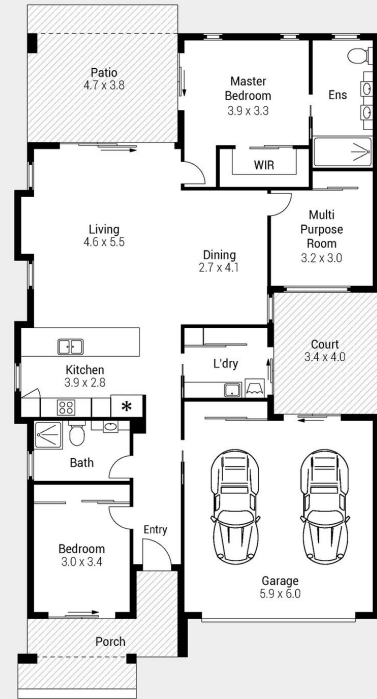
The kitchen is well-appointed with Westinghouse appliances, including a wall oven, cooktop, microwave, and dishwasher, and features a sleek 2-pac finish. Pull-out pantry drawers and integrated power within the pantry add to the practicality, while plantation shutters enhance the overall aesthetic. The adjacent living room is equipped with a split system air conditioner and showcases feature windows, leading to a spacious rear patio through sliding doors.

The rear patio, complete with electric privacy screens, overlooks the low-maintenance garden and includes a garden shed for extra storage. The outdoor area is designed for relaxation, with privacy blinds on the front porch and seamless indoor-outdoor flow throughout the home. Neutral tiles extend from the living areas to the rear patio, creating a cohesive and elegant space. Additional features include a 5kW solar system with 20 panels, stainless steel mesh security screen on the front door, VJ panelling on the ceilings, and ceiling fans in all key living spaces. The double garage offers generous storage, an elevated door, and access to a drying court, while the laundry room is fitted with a vented skylight and convenient storage solutions.

Embrace the opportunity to enjoy country club living at its finest in this beautifully designed home at Halcyon Greens. With its thoughtful layout, modern features, and tranquil setting, Site 195 offers the perfect balance of luxury and low-maintenance living for over 50s.



195 / 7 HALCYON DRIVE
PIMPAMA



Internal	: 131 m ²
Garage	: 40 m ²
Patio	: 20 m ²
Court	: 13 m ²
Porch	: 13 m ²
Total	: 217 m²

Indicative only. Dimensions are approximate. All information contained herein is gathered from sources we believe to be reliable. However, we cannot guarantee its accuracy and interested persons should rely on their own enquiries.

Features of the home

- Spacious 217m² home on a 294m² site
- Three bedrooms
- MPR/Bedroom 3
- Main bedroom with walk-in robe, ensuite, and patio access
- Stylish kitchen with Westinghouse appliances and pull-out pantry drawers
- Open-plan living with air conditioning and feature windows
- Rear patio with electric privacy screens and garden shed
- 5kW solar system with 20 panels
- Ceiling fans in all living areas, bedrooms, and patio
- Double garage with ample storage and access to drying court
- Positioned opposite an open area, close to community facilities and visitor parking

195/7 Halcyon Drive, Pimpama



For Sale

Offers Over \$990,000

Inspection by appointment



Contact
 Lisa Ashton
 0419 601 760
 lisa.ashton@stockland.com.au

Floorplans and elevations are for illustrative purposes only. Whilst all care has been taken in the preparation of the particulars contained herein, no warranty can be given and interested parties must therefore rely on their own enquiries. Note: Drawing is not to scale.