

Charming and Contemporary Living in Halcyon Greens

Welcome to Site 147 at Halcyon Greens, where country club living meets Halcyon's signature style. Designed exclusively for over-50s living, Halcyon Greens redefines modern country club living with its commitment to creating a better way of life.

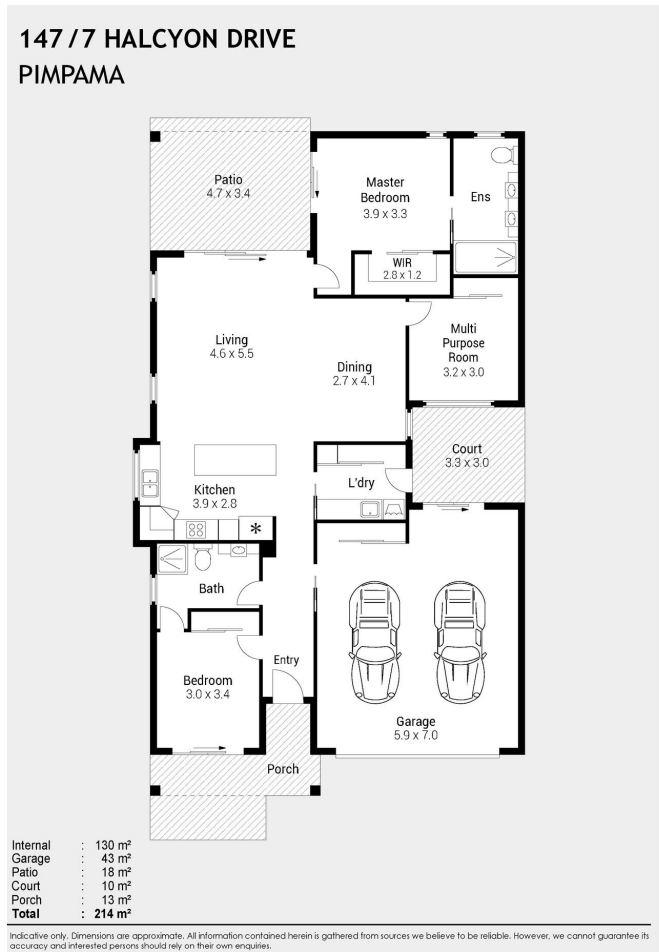
This beautifully presented home sits on a 294m² site and features a thoughtfully designed 214m² floor plan. The residence offers three spacious bedrooms, including a main bedroom with a walk-in robe and ensuite and a second bedroom with two-way access to the main bathroom. The third bedroom doubles as a versatile multi-purpose room or office.

The interior boasts split-system air conditioning in the main bedroom and living areas, complemented by ceiling fans throughout for year-round comfort. Natural light floods the living spaces through feature-height windows in the entry and dining/living areas, while the 3.9m raked ceilings enhance the sense of space.

The kitchen is a chef's delight, with a generous island bench, a corner pantry, ample storage, and a stylish glass feature window above the sink. High-quality Westinghouse appliances, including a wall oven, hotplate, microwave and dishwasher. Adjacent to the kitchen, the laundry is equipped with ample storage and direct access to a drying court for added convenience.

Step outside to the rear entertaining patio, complete with electric privacy screens and overlooking low-maintenance gardens with an irrigation system. The double garage features built-in storage and an insulated door, ensuring both functionality and comfort. Additional features include plantation shutters, drapes and blinds throughout. Solar power with 12 panels and security screens on the front door and rear patio doors. The home's tiled living areas and wet zones, combined with carpeted bedrooms, add a touch of practicality and comfort.

Experience the ultimate in over-50s living at Halcyon Greens, where nature and modern luxury coexist in perfect harmony. Site 147 invites you to enjoy a lifestyle that is both relaxing and inspiring.



Features of the Home

- 294m² site with a 214m² home
- Three bedrooms, including a main bedroom with walk-in robe and ensuite
- Split-system air conditioning in the main bedroom and living areas
- Raked ceilings and feature-height windows
- Kitchen with island bench, corner pantry and Westinghouse appliances
- Rear entertaining patio with electric privacy screens
- Solar power with 12 panels
- Plantation shutters, drapes and blinds throughout
- Double garage with built-in storage and insulated door
- Low-maintenance gardens with irrigation system

147/7 Halcyon Drive, Pimpama



For Sale

Offers Over \$1,025,000

Inspection by appointment



Contact
 Lisa Ashton
 0419 601 760
 lisa.ashton@stockland.com.au

Floorplans and elevations are for illustrative purposes only. Whilst all care has been taken in the preparation of the particulars contained herein, no warranty can be given and interested parties must therefore rely on their own enquiries. Note: Drawing is not to scale.