

Discover Halcyon Greens: Designed exclusively for over 50s, offering a serene country club lifestyle with modern comforts in a tranquil setting, perfect for active living

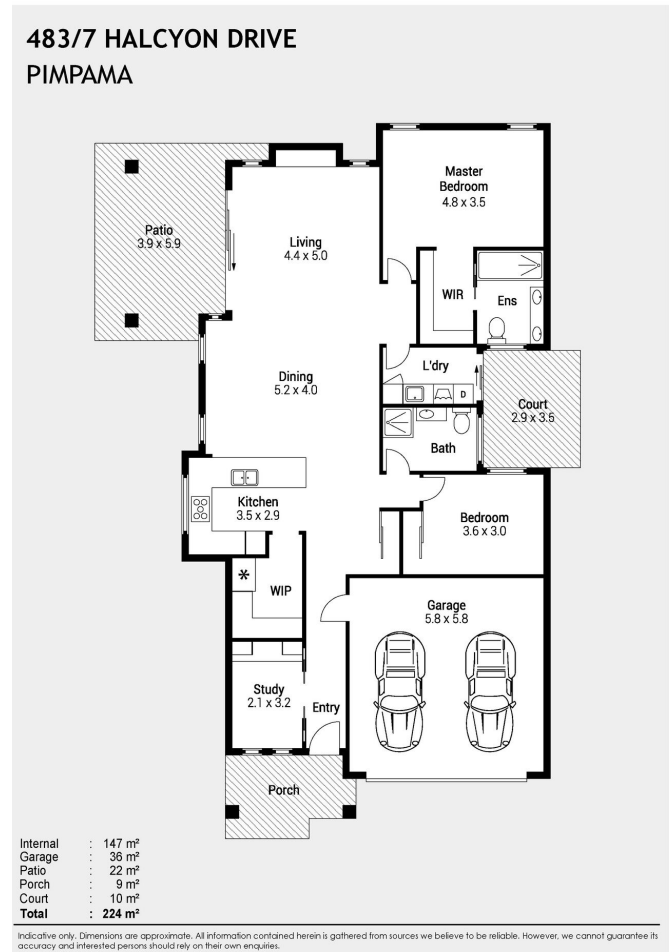
Welcome to Site 483 at Halcyon Greens, an exclusive over-50s community nestled in the lush surroundings of Gainsborough Greens. This exquisite residence offers a perfect blend of nature and luxury, thoughtfully crafted for a refined lifestyle.

Situated on a generous 384 sqm site, the spacious 223 sqm home features two well-appointed bedrooms, including a main bedroom with a luxurious ensuite. A separate main bathroom and a convenient study with built-in cabinetry add to the home's functionality. The modern kitchen boasts a large island bench, pendant lighting, and a Fisher & Paykel deep drawer dishwasher, complemented by an adjoining butler's pantry. The open-plan living area, ideal for entertaining, includes a TV recess and ducted air-conditioning.

Outdoor living shines with extended decking on the rear patio, low-maintenance gardens, and a private courtyard accessible from the laundry. Security features include screens on the front and patio doors, and electric privacy screens on the patio and kitchen window. Plantation shutters, curtains, and blinds are fitted throughout, with window tinting for added privacy.

A double garage provides secure parking and additional storage. Positioned on a large corner site, Site 483 offers full walk-around access, enhancing the connection between indoor and outdoor spaces.

Experience the best of country club living at Halcyon Greens, where luxury meets nature, creating a perfect retreat for those who appreciate the finer things in life.



Features of the home

- Generous 384 sqm site with a 223 sqm house.
- Two bedrooms, including a master with a luxurious ensuite featuring double vanities.
- Convenient study with built-in cabinetry and desk.
- Modern kitchen with island bench, pendant lighting, and Fisher & Paykel deep drawer dishwasher.
- Butler's pantry with plumbing in place for a sink.
- Extended rear patio decking, perfect for outdoor entertaining.
- Private courtyard accessible from the laundry.
- Ducted air-conditioning and TV recess in the living area.
- Security screens, electric privacy screens, and window tinting for added comfort and privacy.
- Double garage with ample storage space.

483/7 Halcyon Drive, Pimpama



For Sale

Offers Over \$1,245,000

Inspection by appointment



Contact
 Lisa Ashton
 0419 601 760
 lisa.ashton@stockland.com.au

Floorplans and elevations are for illustrative purposes only. Whilst all care has been taken in the preparation of the particulars contained herein, no warranty can be given and interested parties must therefore rely on their own enquiries. Note: Drawing is not to scale.