



Discover Halcyon Greens: Designed exclusively for over 50s, offering a serene country club lifestyle with modern comforts in a tranquil setting, perfect for active living.

Welcome to Site 238 Halcyon Greens, a stunning property in the premier Halcyon Greens community in Pimpama. This home offers luxurious contemporary living in a uniquely refined setting.

Upon entering, you are greeted by a spacious, fully tiled porch surrounded by well-established gardens. Inside, the fully tiled living areas add to the home's airy and spacious feel. The second bedroom, located at the front of the home includes a built-in wardrobe, ceiling fan and plush carpeting, ideal for guests or a quiet retreat. The main bathroom features floor-to-ceiling tiles and contemporary fixtures, ensuring style and convenience. The large double garage with epoxy flooring and additional storage behind sliding doors keeps your belongings organized. A versatile multipurpose room off the kitchen, currently set up as a media room, is fully carpeted with double cavity sliding doors, built in cabinetry and a ceiling fan.

The chef's kitchen boasts an island bench with a stone benchtop, double sink, and pendant lighting. It includes AEG appliances, an induction cooktop, Fisher & Paykel deep drawer dishwasher and a well-appointed butler's pantry with additional storage and a bar fridge area. The adjoining laundry with built-in storage leads to a private courtyard.

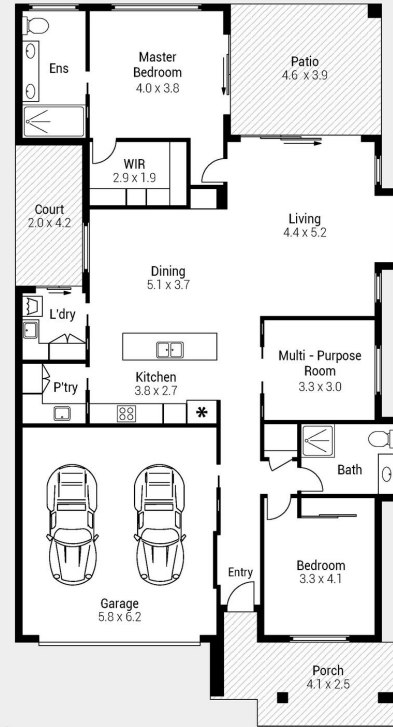
The open-plan kitchen, dining and living area is fully tiled with ducting and ceiling fans for comfort. The main bedroom features soft carpeting, ducting and ceiling fan, an expansive walk-in wardrobe with built-ins and a tall-mirrored shoe drawer. The ensuite impresses with twin vanities, a large shower and floor-to-ceiling feature tiles.

Outdoor entertaining is a delight with a large, fully tiled area accessed through sliding doors with security screens and enhanced by remote privacy screens. Low-maintenance gardens with side access from the front and decorative pebbles add elegance without upkeep. Additional features include plantation shutters, ducted air conditioning, ceiling fans, a 5kW solar panel system, and DC feature wood-look fans in the dining and living areas.

Site 238 Halcyon Greens offers luxurious living in a welcoming community, meticulously crafted for your enjoyment.



238 / 7 HALCYON DRIVE
PIMPAMA



Internal	: 146 m ²
Garage	: 36 m ²
Patio	: 18 m ²
Court	: 8 m ²
Porch	: 14 m ²
Total	: 222 m²

Indicative only. Dimensions are approximate. All information contained herein is gathered from sources we believe to be reliable. However, we cannot guarantee its accuracy and interested persons should rely on their own enquiries.

Features of the home

- Large fully tiled porch and established front gardens
- Modern chef's kitchen with island bench, AEG appliances, and butler's pantry
- Fully tiled open-plan kitchen, dining, and living areas with ceiling fans
- Master suite with carpeted floors, walk-in wardrobe, and en-suite bathroom
- Multipurpose room currently set up as a media room
- Large double garage with epoxy flooring and additional storage
- Spacious outdoor entertaining area with remote privacy screens
- Low maintenance gardens and side access
- Ducted air conditioning, ceiling fans and 5 kW solar panel system

238/7 Halcyon Drive, Pimpama



For Sale

Offers Over \$1,149,000

Inspection by appointment



Contact
 Lisa Ashton
 0419 601 760
 lisa.ashton@stockland.com.au

Floorplans and elevations are for illustrative purposes only. Whilst all care has been taken in the preparation of the particulars contained herein, no warranty can be given and interested parties must therefore rely on their own enquiries. Note: Drawing is not to scale.