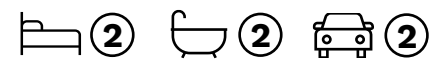


# Site 274 Halcyon Rise



Embrace the perfect blend of country charm and city convenience



The home's spacious design includes two well-appointed bedrooms, with the master suite boasting a stylish ensuite, while the main bathroom showcases floor-to-ceiling tiles and floating vanity units.

A gourmet kitchen awaits, complete with upgraded Neff appliances, including an integrated dishwasher, ensuring both function and sophistication. Thoughtfully designed storage solutions include a custom-fitted walk-in robe in the master bedroom and additional shelving and drawers in the second bedroom.

Plantation shutters and blinds offer both privacy and style, while ducted air conditioning with zone control and ceiling fans throughout provide year-round comfort.



Offers over \$749,000

Inspection by appointment

### Features of the home:

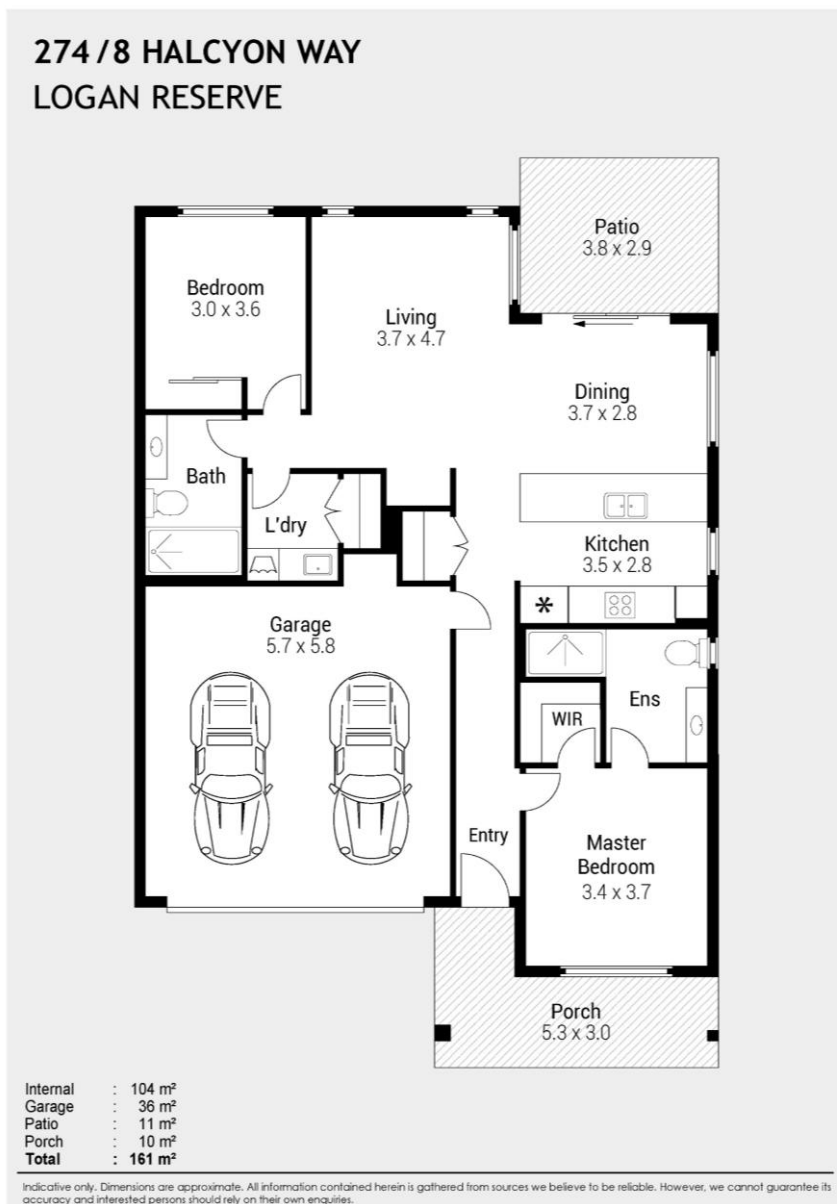
- Spacious Beechmont H10 design (approx. 161sqm)
- Two bedrooms, including master with ensuite
- Upgraded Neff kitchen appliances with integrated dishwasher
- Floor-to-ceiling tiles and floating vanities in bathrooms
- 5.18kW solar system and solar hot water
- Ducted air conditioning with zone control and ceiling fans
- Plantation shutters and quality blinds throughout
- Located in Halcyon Rise with exclusive lifestyle amenities

### Contact

**Tracey Wells**

0492 179 949

[tracey.wells@stockland.com.au](mailto:tracey.wells@stockland.com.au)



Price correct as at 5 March 2025. Subject to change. Subject to availability. Furniture not included.

Floorplans and elevations are for illustrative purposes only. Whilst all care has been taken in the preparation of the particulars contained herein, no warranty can be given and interested parties must therefore rely on their own enquiries. Correct as at 5 March 2025.