

Site 157 Halcyon Rise



Embrace the perfect blend of country charm and city convenience

🛏️ (2) 🚿 (2) 🚗 (1.5) 🚲 (1)

Set on a 270sqm site, this thoughtfully designed 183sqm home features two spacious bedrooms, a dedicated study, an ensuite to the main bedroom, and a main bathroom for guests. The 1.5-car garage offers extra storage space, while the modern interiors are enhanced by square-set ceilings at the entry, LED downlights, and a clever extended TV recess in the living area.

With split-system air conditioning in the main living, ceiling fans throughout, and tinted western windows for added heat protection. Energy efficiency is boosted by a 2.59kW solar system. The easy-care lifestyle continues outside, with artificial turf in the backyard ensuring a low-maintenance, green finish all year round.





Offers over \$765,000
Inspection by appointment

Features of the home:

- Prime location directly across from community facilities
- Spacious 183sqm home on a 270sqm site
- 2 bedrooms plus a versatile study
- Ensuite to main bedroom and separate main bathroom
- 1.5-car garage with extra storage space
- Split system air conditioning and ceiling fans throughout
- 2.59kW solar system for energy efficiency
- Tinted western windows for heat protection
- Low-maintenance artificial turf backyard

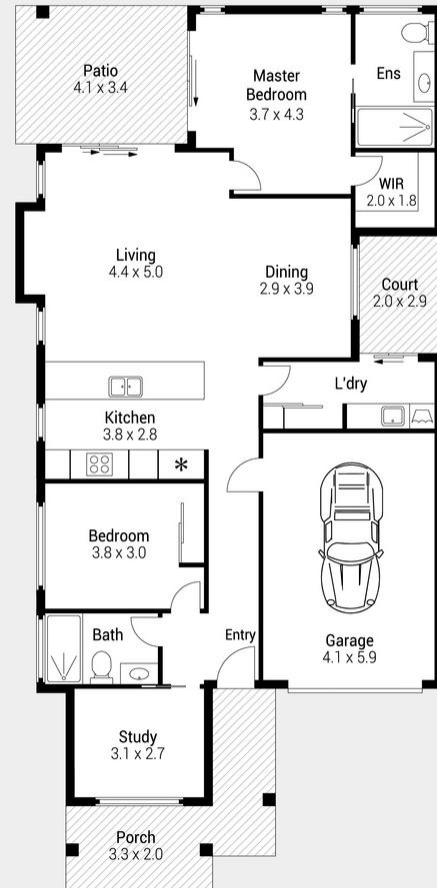
Contact

Tracey Wells

0492 179 949

tracey.wells@stockland.com.au

157/8 HALCYON WAY LOGAN RESERVE



Internal	: 124 m ²
Garage	: 26 m ²
Patio	: 14 m ²
Porch	: 13 m ²
Court	: 6 m ²
Total	: 183 m²

Indicative only. Dimensions are approximate. All information contained herein is gathered from sources we believe to be reliable. However, we cannot guarantee its accuracy and interested persons should rely on their own enquiries.



Price correct as at 24 March 2025. Subject to change. Subject to availability. Furniture not included.

Floorplans and elevations are for illustrative purposes only. Whilst all care has been taken in the preparation of the particulars contained herein, no warranty can be given and interested parties must therefore rely on their own enquiries. Correct as at 24 March 2025.