

For Sale

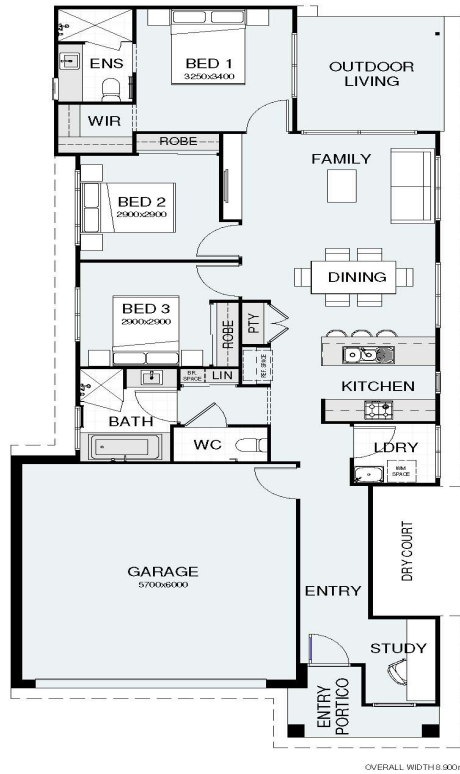


FELIX 150 AURA MOD

MCC: LIVEABLE HOUSING COMPLIANT



This document is prepared for marketing and illustrative purposes only, and should only be used as a guide. © Copyright 2024 BOLD Properties and related companies. Y1



OVERALL LENGTH 10.000m
LENGTH WILL VARY DEPENDING ON FACADE TYPE

166m² SITE COVERAGE
INCLUDING EAVES AS SHOWN

FLOOR AREAS

LIVING	100.8 m ²
GARAGE	37.4 m ²
OUTDOOR LIVING	8.2 m ²
PORTICO	4.2 m ²
TOTAL	150.6 m ²

ENTRY PORTICO WILL VARY IN SIZE
DEPENDING ON FACADE TYPE

MIN. BLOCK WIDTH 10.0m

MAY NOT SLIT ALL BLOCKS
DEPENDING ON SETBACK REQUIREMENTS

NCC: LIVEABLE HOUSING COMPLIANT

FELIX 150 AURA MOD



This document is produced for marketing and illustration purposes only, and should only be used as a guide. © Copyright of Bold Properties and related companies.

V1